

Eastwood®

DO THE JOB RIGHT.®

Item #12011

MIG135 WELDER

SERVICE MANUAL



STATEMENT OF LIMITED WARRANTY

The Eastwood Company (hereinafter "Eastwood") warrants to the end user (purchaser) of all new welding and cutting equipment (collectively called the "products") that it will be free of defects in workmanship and material. This warranty is void if the equipment has been subjected to improper installation, improper care or abnormal operations.

WARRANTY PERIOD:

All warranty periods begin on the date of purchase from Eastwood. Warranty Periods are listed below, along with the products covered during those warranty periods:

3 Year Warranty on Material, Workmanship, and Defects:

- Eastwood MIG135 Welder

Items not covered under this warranty: Contact tips, nozzles, wire, and ground clamp and cable.

All other components are covered by the warranty and will be repaired or replaced at the discretion of Eastwood.

2 Years:

- All Welding Helmets.

CONDITIONS OF WARRANTY TO OBTAIN WARRANTY COVERAGE:

Purchaser must first contact Eastwood at 1-800-345-1178 for an RMA# before Eastwood will accept any welder returns.

Final determination of warranty on welding and cutting equipment will be made by Eastwood.

WARRANTY REPAIR:

If Eastwood confirms the existence of a defect covered under this warranty plan, Eastwood will determine whether repair or replacement is the most suitable option to rectify the defect. At Eastwood's request, the purchaser must return, to Eastwood, any products claimed defective under Eastwood's warranty.

FREIGHT COSTS:

The purchaser is responsible for shipment to and from Eastwood.

WARRANTY LIMITATIONS:

EASTWOOD WILL NOT ACCEPT RESPONSIBILITY OR LIABILITY FOR REPAIRS UNLESS MADE BY EASTWOOD. EASTWOOD'S LIABILITY UNDER THIS WARRANTY SHALL NOT EXCEED THE COST OF CORRECTING THE DEFECT OF THE EASTWOOD PRODUCT. EASTWOOD WILL NOT BE LIABLE FOR INCIDENTAL OR CONSEQUENTIAL DAMAGES (SUCH AS LOSS OF BUSINESS, ETC.) CAUSED BY THE DEFECT OR THE TIME INVOLVED TO CORRECT THE DEFECT. THIS WRITTEN WARRANTY IS THE ONLY EXPRESS WARRANTY PROVIDED BY EASTWOOD WITH RESPECT TO ITS PRODUCTS. WARRANTIES IMPLIED BY LAW SUCH AS THE WARRANTY OF MERCHANTABILITY ARE LIMITED TO THE DURATION OF THIS LIMITED WARRANTY FOR THE EQUIPMENT INVOLVED. THIS WARRANTY GIVES THE PURCHASER SPECIFIC LEGAL RIGHTS.

THE PURCHASER MAY ALSO HAVE OTHER RIGHTS WHICH VARY FROM STATE TO STATE.

SPECIFICATIONS

Output Amperage Range	Maximum Output No Load Voltage	Maximum Input Amperage	Input Voltage	Rated Duty Cycle	Wire Feed Rate	Welding Wire Spool Sizes	Weight	Overall Dimensions
25-135 A	28 V DC	20 Amp	120 VAC 60 Hz	20% @ 90 A	40- 450 IPM	4-8"	56 Lbs. [25kg]	16.5" L [408mm] x 9.6" W [244mm] x 14.5" H [367mm]

Wire Type	Solid	Stainless	Flux Cored
Diameter	0.023-0.030" [0.6-0.8mm]	0.023-0.030" [0.6-0.8mm]	0.030-0.035" [0.8-0.9mm]

UNPACKING

When unpacking your Eastwood MIG135, check to make sure all of the parts listed below are included:

- | | | |
|------------------------------------|---|------------------------|
| (1) MIG135 Welder | (1) Gas Hose | (2) Contact Tips |
| (1) MIG Gun Cable Assembly (9 ft.) | (1) Hand Held Shield | (1) Contact Tip Wrench |
| (1) Ground Cable Assembly (9 ft.) | (1) Wire Brush | (1) Instructions |
| (1) Gas Flow Regulator | (1) 2lb Spool of 0.023in (0.6mm) Solid Wire | |

DUTY CYCLE

The rated Duty cycle refers to the amount of welding that can be done within an amount of time. It is easiest to look at your welding time in blocks of 10 Minutes and the Duty Cycle being a percentage of that 10 Minutes. If welding at 90 Amps with a 20% Duty Cycle, within a 10 Minute block of time you can weld for 2 Minutes with 8 Minutes of cooling for the welder. If the duty cycle is exceeded and the breaker is tripped, allow the unit to cool for a minimum of 15 Minutes. To increase the duty cycle you can turn down the Voltage Output control. Going above 90 Amps will yield a lower duty cycle.

SAFETY INFORMATION

The following explanations are displayed in this manual, on the labeling, and on all other information provided with this product:

⚠ DANGER

DANGER indicates a hazardous situation which, if not avoided, will result in death or serious injury.

⚠ WARNING

WARNING indicates a hazardous situation which, if not avoided, could result in death or serious injury.

⚠ CAUTION

CAUTION used with the safety alert symbol, indicates a hazardous situation which, if not avoided, could result in minor or moderate injury.

⚠ NOTICE

NOTICE is used to address practices not related to personal injury.



⚠ READ INSTRUCTIONS

Thoroughly read and understand this manual before using. Save for future reference.



⚠ DANGER ELECTRIC SHOCK CAN CAUSE INJURY OR DEATH!

- Improper use of an electric Welder can cause electric shock, injury and death!
Read all precautions described in the Welder Manual to reduce the possibility of electric shock.
- Disconnect Welder from power supply before assembly, disassembly or maintenance of the torch, contact tip and when installing or removing nozzles.
- Always wear dry, protective clothing and leather welding gloves and insulated footwear. Use suitable clothing made from durable flame-resistant material to protect your skin.
- If other persons or pets are in the area of welding, use welding screens to protect bystanders from sparks.
- Always operate the Welder in a clean, dry, well ventilated area. Do not operate the Welder in humid, wet, rainy or poorly ventilated areas.
- The electrode and work (or ground) circuits are electrically “hot” when the Welder is on. Do not allow these “hot” parts to come in contact with your bare skin or wet clothing.
- Separate yourself from the welding circuit by using insulating mats to prevent contact from the work surface.
- Be sure that the work piece is properly supported and grounded prior to beginning an electric welding operation.
- Always attach the ground clamp to the piece to be welded and as close to the weld area as possible. This will give the least resistance and best weld.



⚠ DANGER WELDING SPARKS CAN CAUSE FIRE OR EXPLOSION!

- Electric welding produces sparks which can be discharged considerable distances at high velocity igniting flammable or exploding vapors and materials.
- Do not operate electric arc Welder in areas where flammable or explosive vapors are present.
- Do not use near combustible surfaces. Remove all flammable items within 35 feet of the welding area.
- Always keep a fire extinguisher nearby while welding.
- Use welding blankets to protect painted and or flammable surfaces; rubber weather-stripping, dash boards, engines, etc.
- Ensure power supply has properly rated wiring to handle power usage.

SAFETY INFORMATION



⚠ WARNING ELECTROMAGNETIC FIELDS CAN BE A HEALTH HAZARD!

- The electromagnetic field that is generated during arc welding may interfere with various electrical and electronic devices such as cardiac pacemakers. Anyone using such devices should consult with their physician prior to performing any electric welding operations.
- Exposure to electromagnetic fields while welding may have other health effects which are not known.



⚠ WARNING ARC RAYS CAN BURN!

- Arc rays produce intense ultraviolet radiation which can burn exposed skin and cause eye damage. Use a shield with the proper filter (a minimum of #11) to protect your eyes from sparks and the rays of the arc when welding or when observing open arc welding (see ANSI Z49.1 and Z87.1 for safety standards).
- Use suitable clothing made from durable flame-resistant material to protect your skin.
- If other persons or pets are in the area of welding, use welding screens to protect bystanders from sparks and arc rays.



⚠ WARNING FUMES AND WELDING GASES CAN BE A HEALTH HAZARD!

- Fumes and gasses released during welding are hazardous. Do not breathe fumes that are produced by the welding operation. Wear an OSHA-approved respirator when welding.
- Always work in a properly ventilated area.
- Never weld coated materials including but not limited to: cadmium plated, galvanized, lead based paints.



⚠ CAUTION HOT METAL AND TOOLS WILL BURN!

- Electric welding heats metal and tools to temperatures that will cause severe burns!
- Use protective, heat resistant gloves and clothing when using Eastwood or any other welding equipment. Never touch welded work surface, torch tip or nozzle until they have completely cooled.

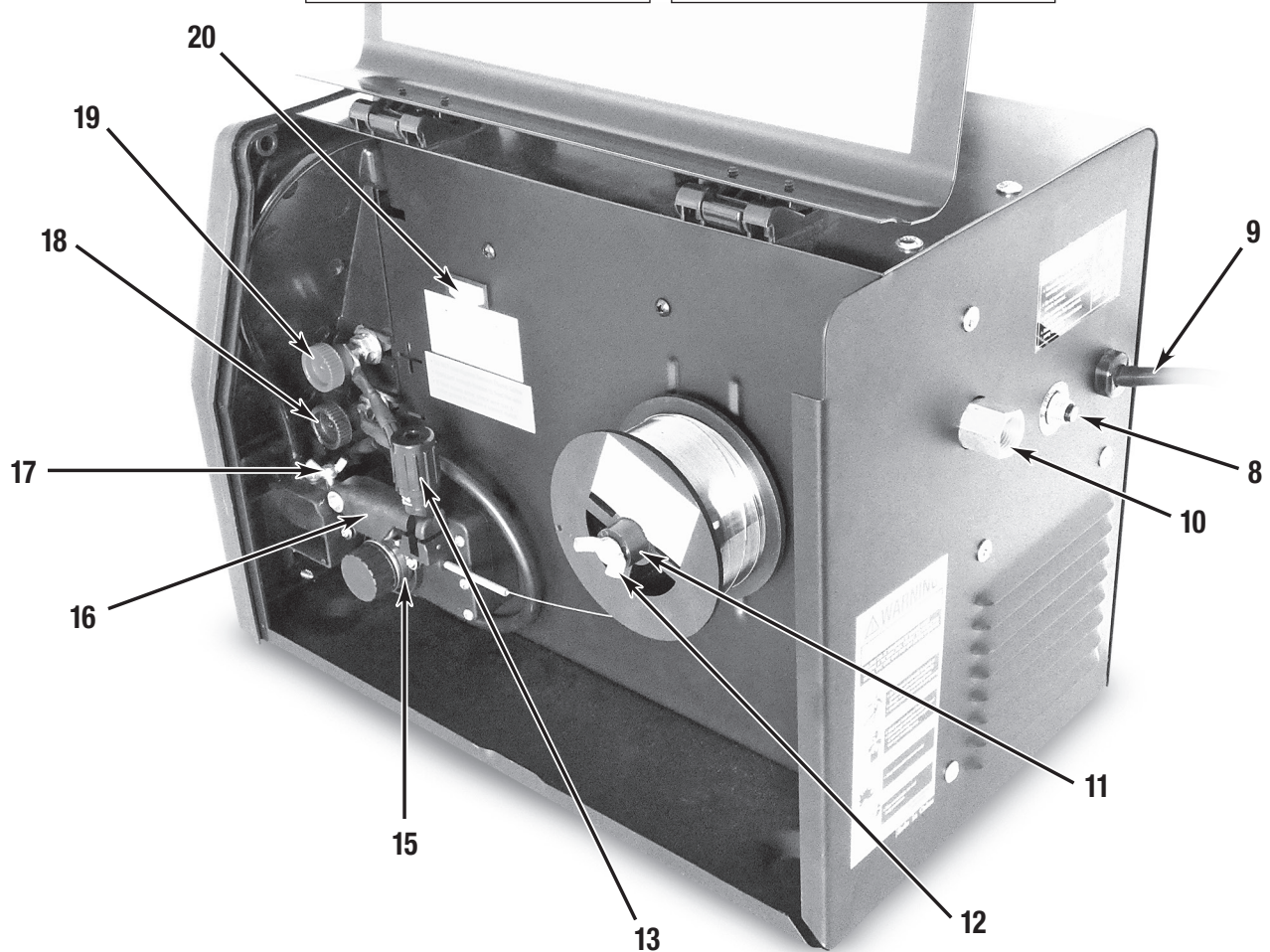
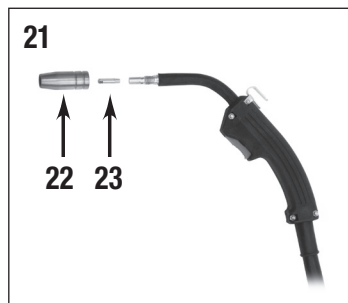


⚠ CAUTION FLYING METAL CHIPS CAN CAUSE INJURY!

- Grinding and sanding will eject metal chips, dust, debris and sparks at high velocity. To prevent eye injury wear approved safety glasses.
- Wear an OSHA-approved respirator when grinding or sanding.
- Read all manuals included with specific grinders, sanders or other power tools used before and after the welding process. Be aware of all power tool safety warnings.

COMPONENTS & CONTROLS

- | | |
|-------------------------------|----------------------------|
| 1. Ground Cable Access Hole | 16. Rocker Arm |
| 2. MIG Gun Cable Access Hole | 17. MIG Gun Thumb Screw |
| 3. MIG Gun Trigger Receptacle | 18. Negative Terminal |
| 4. Wire Speed Control | 19. Positive Terminal |
| 5. Power Switch | 20. Torch/Spool Gun Switch |
| 6. Voltage Control | 21. Torch |
| 7. Latch | 22. Nozzle |
| 8. Breaker Reset Switch | 23. Contact Tip |
| 9. Power Cord | 24. Ground Clamp |
| 10. Shielding Gas Inlet | |
| 11. Wire Spindle | |
| 12. Wire Tension Thumb Screw | |
| 13. Pressure Adjuster | |
| 14. Guide Pipe | |
| 15. Drive Roller and Knob | |



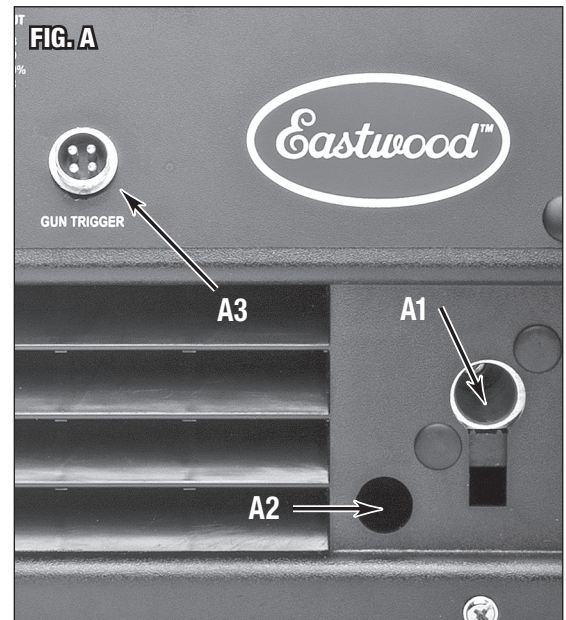
INSTALLATION

⚠ DANGER ELECTRIC SHOCK HAZARD!

Turn welder off and unplug from electrical outlet before disassembly, assembly, or replacing torch consumables, or changing wire spool.

INSTALLING THE WELDING GUN

1. Open the side door of the welder and loosen the MIG Gun Thumb Screw (**FIG. B3**) located on the Drive Motor.
2. Slide the brass body of the Welding Gun in through the front of the unit in the designated hole (**FIG. A1**). Be sure to insert until it bottoms against the drive assembly.
3. Tighten the MIG Gun Thumb Screw finger tight (**FIG. B3**).
NOTE: Make sure that the gun end is tight against the drive assembly or gas may either leak or not be able to pass through the connections to the end of the Welding Gun.
4. Connect the Metal Plug on the MIG Gun to the Gun Trigger connection on the front of the welder (**FIG. A3**).
5. Switch the Selector Switch to the Welding Gun position (**FIG. B1**).



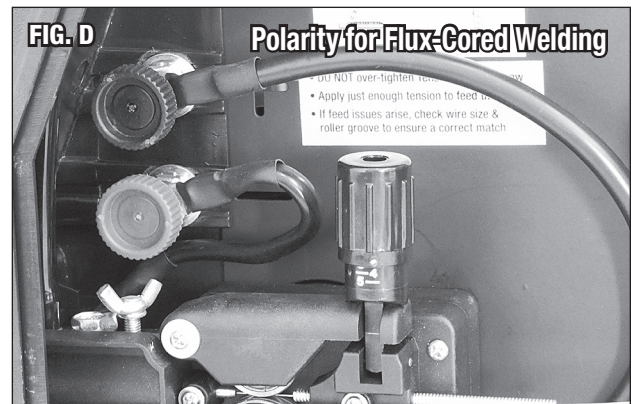
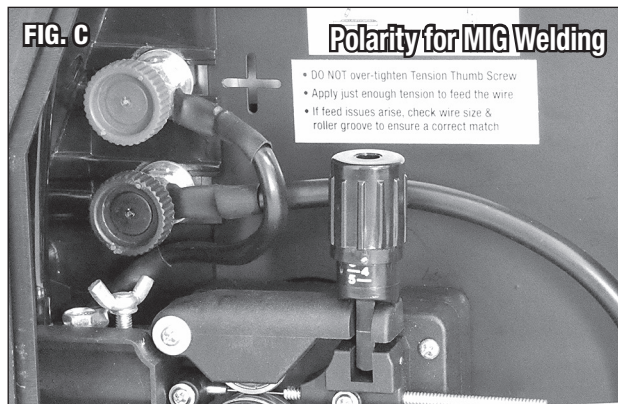
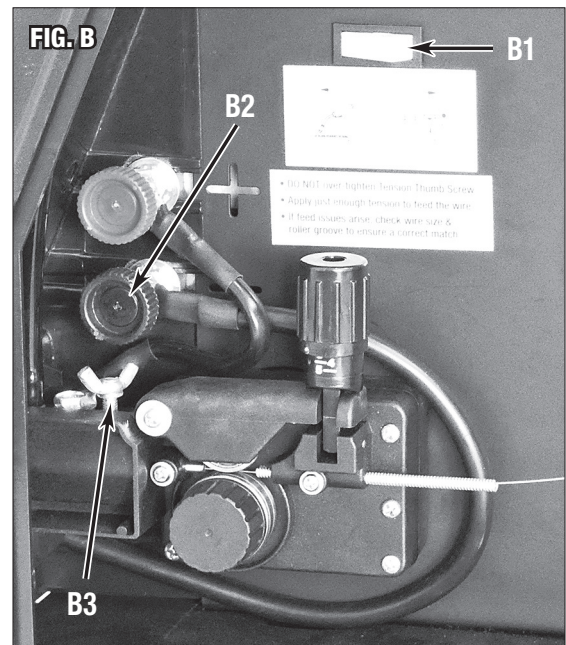
INSTALLING THE GROUND CLAMP

1. Insert the terminal connection of the Ground Clamp through the designated hole in the front of the unit (**FIG. A2**).
2. Remove the Black Negative Terminal Knob (**FIG. B2**) and install the wire terminal on the stud.
3. Reinstall the Black Negative Terminal Knob (**FIG. B2**) and finger tighten.

⚠ DANGER ELECTRIC SHOCK CAN CAUSE INJURY OR DEATH! Disconnect welder from power supply before beginning.

CHANGING POLARITY

1. The Eastwood MIG135 comes set up to weld with Solid MIG Wire, to use a Flux-Cored Wire the Polarity must be changed.
2. Disconnect the Ground Clamp Lead by removing the Black Negative Knob.
3. Remove the lead from the stud.
4. Remove the Red Positive Knob and its associated lead.
5. Install the Ground Clamp Lead onto the Positive (+) Stud and replace the Red Positive Knob.
6. Install the lead from the MIG Torch Terminal onto the Negative (-) Stud and replace the Black Ground Knob.



INSTALLING SHIELDING GAS SUPPLY

⚠ WARNING BUILDUP OF GAS CAN INJURE OR KILL!

- Shut off shielding gas supply when not in use.
- Always ventilate confined spaces or use approved air-supplied respirator.
- Always turn your face away from valve outlet when opening cylinder valve.

⚠ WARNING CYLINDERS CAN EXPLODE IF DAMAGED!

Shielding gas cylinders contain gas under high pressure. If damaged, a cylinder can explode. As gas cylinders are a normal component of the welding process, use extra care to handle them carefully.

- Protect compressed gas cylinders from excessive heat, mechanical shocks, physical damage, slag, open flames, sparks and
- Install cylinders in an upright position by securing to a specifically designed rack, cart or stationary support to prevent falling or tipping over.
- Never weld on a pressurized cylinder or explosion will occur.
- Use only correct shielding gas cylinders, regulators, hoses and fittings designed for the specific application; maintain them and all related components in good condition.
- Keep protective cap in place over valve except when cylinder is in use.
- Use proper equipment, procedures and have adequate help when moving or lifting cylinders.

A Shielding Gas Bottle is not included with your Eastwood MIG135 but is necessary to use when welding using Solid MIG Wire. A Shielding Gas Bottle can be purchased or rented at most local Welding Supply Stores. Eastwood recommends the use of 75% Argon / 25% CO² for shielding gas when MIG welding Steel, Tri-Mix (90% He / 7.5% Ar / 2.5% CO₂) for Stainless Steel, and 100% Argon for Aluminum.

1. Place the Eastwood MIG135 in its dedicated area or on a welding cart.
2. Secure your Shielding Gas Bottle to a stationary object or mount to your welding cart if it is equipped to hold one so that the cylinder cannot fall over.
3. Remove the cap from the Shielding Gas Bottle.
4. Insert the large brass male fitting on the Shielding Gas Regulator into the female fitting on the Shielding Gas Bottle. **NOTE:** Do not use White Teflon Tape on this connection as it is a compression fitting and does not require it, if you have a leak check for burrs or dirt in the threads.
5. Tighten the fitting with a wrench till snug, do not over tighten.
6. Connect either end of the Gas Line included with your Eastwood MIG135 to the fitting on the regulator and wrench tighten till snug.
7. Connect the other end of the gas line to the fitting on the rear of the Eastwood MIG135 and wrench tighten till snug.
8. Check the gas line for leaks by slowly opening the valve on the gas bottle. When welding the valve on the bottle should always be all the way open.

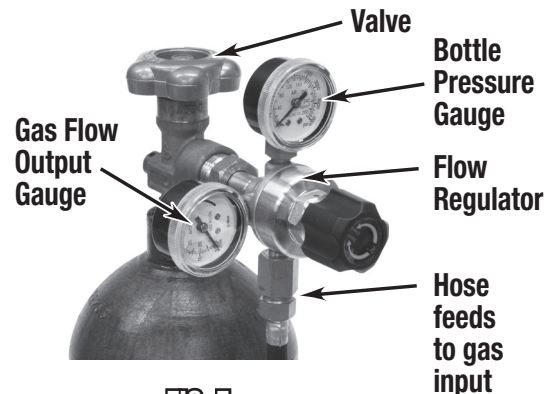
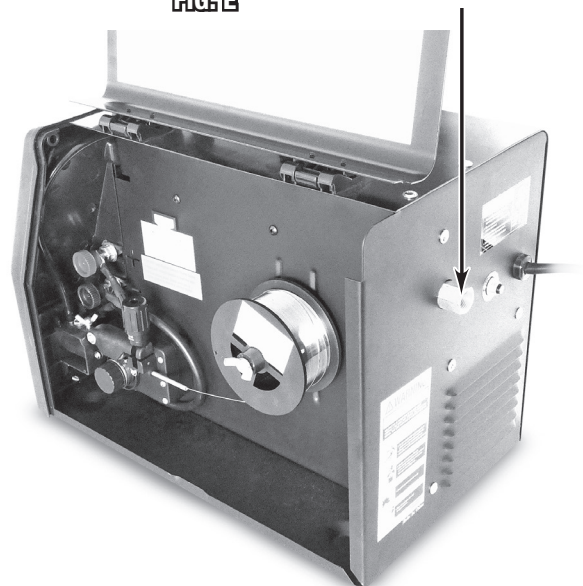


FIG. E



INSTALLING WIRE SPOOL

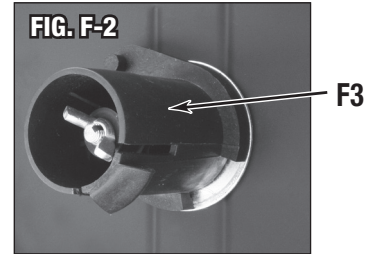
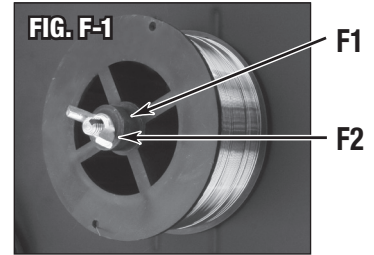
The Eastwood MIG135 can be used with either a 4" or an 8" Wire Spool. To use the larger 8" spool an included adaptor is necessary.

⚠ DANGER ELECTRIC SHOCK HAZARD!

The electrode and work (or ground) circuits are electrically "hot" when the welder is on. Do not touch these "hot" parts with your bare skin or wet clothing.

To install a 4" Wire Spool:

1. Open the door of the welder and remove the wing nut (**FIG. F2**), spacer (**FIG. F1**), and 8" Spool Adaptor (**FIG. F3**) from the Wire Spool Spindle.
2. Slide the 4" Wire Spool onto the spindle and reinstall the spacer and the wing nut and place the 8" Spool Adaptor in a safe place if it is needed in the future.
3. To set the tension on the wire, tighten the wing nut till there is a slight resistance to spinning the wire spool on the spindle. If the tension is set too loose the wire spool will spin on the shaft and unspool all of the wire. If the tension is too tight, the drive roller will have issues pulling the wire off the spool and some slipping may occur. **NOTE:** Hold exposed wire end to keep the spool from unraveling.



To install an 8" Wire Spool:

1. Open the door of the welder and remove the wing nut, spacer, and 8" Spool Adaptor from the Wire Spool Spindle.
2. Slide the 8" Wire Spool Adaptor into the center of the wire spool.
3. Slide the 8" Wire Spool Adaptor with the wire spool installed onto the spindle and reinstall the spacer and the wing nut.
4. To set the tension on the wire, tighten the wing nut till there is a slight resistance to spinning the wire spool on the spindle. If the tension is set too loose the wire spool will spin on the shaft and unspool all of the wire. If the tension is too tight, the drive roller will have issues pulling the wire off the spool and some slipping may occur.

⚠ DANGER ELECTRIC SHOCK HAZARD!

The electrode and work (or ground) circuits are electrically "hot" when the welder is on. Do not touch these "hot" parts with your bare skin or wet clothing.

⚠ WARNING WELDING WIRE CAN BE DANGEROUS!

- Never point the welding gun at any part of the body, other people, or metal surfaces.
- Wear safety glasses and handle welding wire safety as it can be sharp and cause injury.

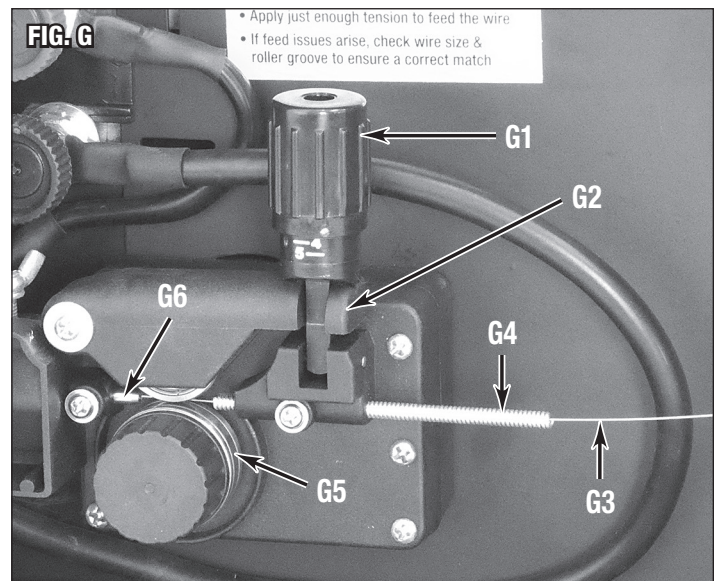
⚠ WARNING MOVING PARTS CAN BE DANGEROUS!

- Use care when working near the drive motor assembly as it can pinch.
- Do not put fingers or other body parts between moving parts.

THREADING WELDING WIRE THROUGH THE DRIVE TO THE WELDING GUN

⚠ DANGER ELECTRIC SHOCK CAN CAUSE INJURY OR DEATH! Disconnect welder from power supply before beginning.

1. Unlock the Pressure Adjuster (**FIG. G1**) and lift up the rocker arm (**FIG. G2**). Ensure that the wire drive roller is appropriate to the welding wire size, see following page describing the installation of the Drive Roller. The Drive Roller comes installed for 0.6mm/0.023" wire.
2. Pull out the welding wire (**FIG. G3**) from the wire spool carefully; **NOTE:** Do not let go of the wire prior to step 5 or the spool will unravel and be useless.
3. Cut off the small piece of the curved segment at the front of welding wire and straighten the welding wire approximately 3.0" long.
4. Thread the welding wire through the Guide Pipe (**FIG. G4**) and over the wire Drive Roller (**FIG. G5**) and into the torch hole (**FIG. G6**).
5. Reattach the Rocker Arm (**FIG. G2**) and reset the Pressure Adjuster (**FIG. G1**).



6. Remove the Contact Tip and Nozzle from the MIG Gun.
7. Turn on the machine and set the wire speed to about "5".
8. With the gun pointed away from you and others, depress the trigger to begin feeding wire. **NOTE:** Watch the drive roller to see if any slipping is occurring between the roller and the wire – if so turn the machine off and tighten the Pressure Adjuster 1/4 turn and test again. Also check Wire Spool Wing Nut tightness.
9. You do not want to set too much tension on the Pressure Adjuster as it will tend to deform the wire. Just enough to feed the wire without slipping.
10. Once the wire has emerged from the tip of the MIG Gun, turn the machine OFF and replace the Contact Tip and Nozzle.

CONNECTING THE WELDER TO A POWER SOURCE

The Eastwood MIG135 welder requires a dedicated 120 VAC 20 Amp grounded outlet protected by a breaker. If using an extension cord, use a 12 AWG cord for up to 50'.

SHIELDING GAS FLOW ADJUSTMENT

After connecting your Shielding Gas Regulator, the gas flow rate needs to be adjusted so that the proper amount of Shielding Gas is flowing over your weld. If there is too little gas flow there will be porosity in your welds as well as excessive spatter, if there is too much gas flow you will be wasting gas and may affect the weld quality. The included regulator has 2 gauges on it; the gauge on the left is your flow rate while the gauge on your right is your tank pressure.

11. Open your Shielding Gas tank valve all the way.
12. Adjust the knob on the regulator to ~30 CFH.
13. Turn on the welder and trigger the MIG Gun switch which will start the gas flow.
14. As you trigger the MIG Gun switch you will notice that as the gas flow starts the needle on the gauge drops to a steady reading. The reading while flowing is the value you want to read.
15. The gas flow should be set to ~20 CFH while flowing. **The CFH (Cubic Feet per Hour) scale is the inside scale in red on your flow gauge.** 20 CFH is the most typical flow rate but it may need to be adjusted in some cases depending if there is a slight breeze or some other instance where additional shielding gas is required to prevent porosity in the weld.
16. When finished welding remember to close the gas valve on the bottle.

CHANGING THE DRIVER ROLLER

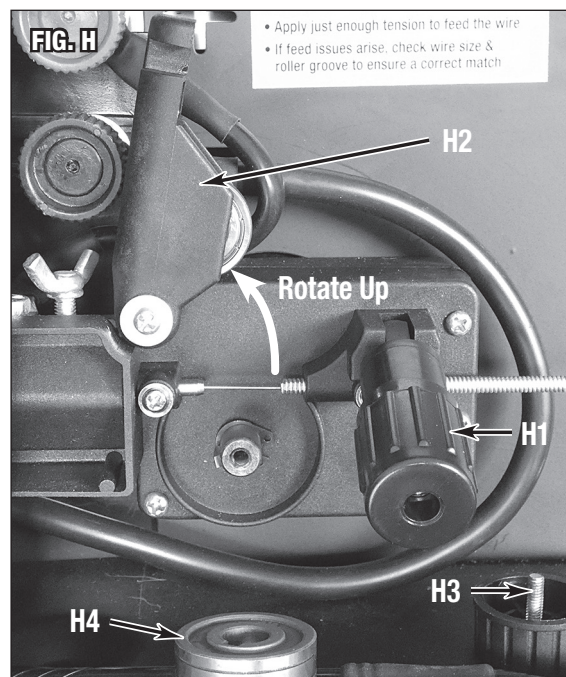
The wire feed drive roller on the drive motor has 2 grooves, one for 0.023" (0.6mm) welding wire and another for 0.030" (0.8mm) or 0.035" (0.9mm) welding wire. Your MIG135 comes with the drive roller installed for using 0.023" (0.6mm) wire. In the event that 0.030" or 0.035" welding wire is to be used, the Drive Roller needs to be changed.

⚠ DANGER ELECTRIC SHOCK HAZARD!

Turn welder off and unplug from electrical outlet before removing or installing the Drive Roller.

FOR EASTWOOD MIG135 WELDERS WITH KEY WAY STYLE DRIVER ROLLER (FIG. H)

1. Unlock the Pressure Adjuster (**FIG. H1**) by pulling it down and towards you.
2. Lift the Rocker Arm (**FIG. H2**) up and out of the way.
3. Unthread and remove large center Knob holding the Drive Roller in place (**FIG. H3**).
4. Slide the Drive Roller (**FIG. H4**) off the shaft.
5. Determine which size wire is going to be used and slide the drive roller back onto the shaft by aligning the key on the shaft with the keyway on the roller. **NOTE:** The stamped marking on the side of the drive roller indicates the size of the groove on the opposite side of the roller. The groove closest to the drive motor is the groove that will be used. If setting up to use 0.023" (0.6mm) wire, the '0.6' stamping should be facing the machine when installing it.
6. Tighten the thumb screw on the Drive Roller and lower the Rocker Arm (**FIG. H2**) back into place.
7. Lift up on the Pressure Adjuster (**FIG. H1**) to put back in place and adjust as necessary.



FOR EASTWOOD MIG135 WELDERS WITH SET SCREW STYLE DRIVE ROLLER

⚠ DANGER ELECTRIC SHOCK HAZARD!

Turn welder off and unplug from electrical outlet.

1. Unlock the Pressure Adjuster (**FIG. H1**) by pulling the top wing nut towards the rear of the welder.
2. Lift the Rocker Arm (**FIG. H2**) and rotate the drive roller by hand until you have access to the set screw in the center of the roller.
3. Loosen the set screw.
4. Slide the drive roller off the shaft.
5. Determine which size wire is going to be used and slide the Drive Roller back onto the shaft by lining up the set screw with the flat area on the shaft.
NOTE: The stamped marking on the side of the Drive Roller indicates the size of the groove on the opposite side of the roller. The groove closest to the drive motor is the groove that will be used. If setting up to use 0.023" (0.6mm) wire, the '0.6' stamping should be facing the user when installing it.
6. Tighten the set screw on the Drive Roller and lower the Rocker Arm (**FIG. H2**) back into place.
7. Lift up on the Pressure Adjuster (**FIG. H1**) to put back in place and adjust as necessary.

SET UP OPERATION FOR SPOOL GUN WELDING

SET UP FOR SPOOL GUN WELDING

The Eastwood MIG135 is set up to use a spool gun which allows for easy feeding of aluminum wire to expand your welding capabilities. This is an optional accessory and can be purchased separately from Eastwood.

⚠ DANGER ELECTRIC SHOCK HAZARD!

Turn welder off and unplug from power source before installing or removing Spool Gun.

1. Switch the selector switch to the Spool Gun position.
2. Open the side door of the welder and loosen the Torch Tensioner located on the side of the drive roller. If the standard welding gun is installed remove it and its associated connector.
3. Slide the brass body of the Spool Gun in through the front of the unit in the designated hole. Be sure to insert until it bottoms against the drive assembly or a gas leak may occur.
4. Connect the metal plug to the gun trigger connection on the front of the welder.
5. Tighten the Torch Tensioner finger tight.

THREADING WELDING WIRE THROUGH THE SPOOL GUN

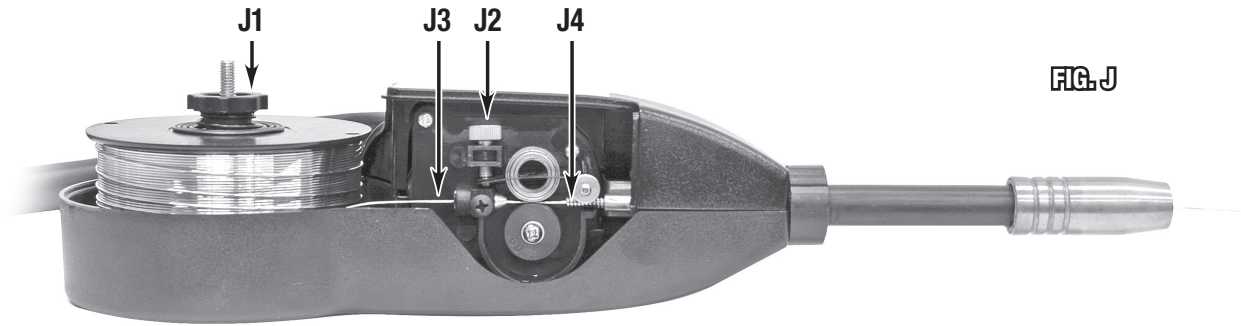
⚠ DANGER ELECTRIC SHOCK HAZARD!

Turn welder off and unplug from electrical outlet.

⚠ WARNING WELDING WIRE CAN BE DANGEROUS!

- Never point the welding gun at any part of the body, other people, or metal surfaces.
- Wear safety glasses and handle welding wire safety as it can be sharp and cause injury.

1. Set the switch above the drive motor to the spool gun setting (**FIG. B1**).
2. Remove the thumb screw and clear plastic wire spool cover.
3. Remove the thumb screw and spring tensioner that holds the wire spool on (**FIG. J1**).
4. Place wire spool on spindle and replace the thumb screw with spring tensioner and tighten till the point that the spool has some tension on it.
5. Loosen the Brass Tensioner Thumb Screw (**FIG. J2**) until it is possible to feed the welding wire through the drive roller grooves.
6. Feed the wire by hand from the spool into the inlet guide, (**FIG. J3**) past the drive rollers and into the wire inlet (**FIG. J4**).
7. Tighten the Brass Tensioner Thumb Screw (**FIG. J2**) until it applies light pressure onto the welding wire. If this is too tight it will deform the wire and cause feeding issues, if it is too loose the drive roller will slip on the wire.
8. Remove the nozzle and contact tip.



1. Replace the wire spool cover.
2. Plug in welder to your power source and turn on the welder.
3. Trigger the Spool Gun to feed the wire and adjust the Brass Tensioner Thumb Screw (**FIG. J2**) so that the wire does not slip.
4. Replace Contact Tip and Nozzle.
5. Feed wire through the gun and cut the wire exposing a ~3/4" length out of the contact tip.

OPERATION

⚠ DANGER ELECTRIC SHOCK CAN CAUSE INJURY OR DEATH!

- Improper use of an electric Welder can cause electric shock, injury and death! Read all precautions described in the Welder Manual to reduce the possibility of electric shock.
- Disconnect Welder from power supply before assembly, disassembly or maintenance of the torch, contact tip and when installing or removing nozzles.
- Always wear dry, protective clothing and leather welding gloves and insulated footwear. Use suitable clothing made from durable flame-resistant material to protect your skin.
- If other persons or pets are in the area of welding, use welding screens to protect bystanders from sparks.
- Always operate the Welder in a clean, dry, well ventilated area. Do not operate the Welder in humid, wet, rainy or poorly ventilated areas.
- The electrode and work (or ground) circuits are electrically “hot” when the Welder is on. Do not allow these “hot” parts to come in contact with your bare skin or wet clothing.
- Separate yourself from the welding circuit by using insulating mats to prevent contact from the work surface.
- Be sure that the work piece is properly supported and grounded prior to beginning an electric welding operation.
- Always attach the ground clamp to the piece to be welded and as close to the weld area as possible. This will give the least resistance and best weld.

⚠ DANGER WELDING SPARKS CAN CAUSE FIRE OR EXPLOSION!

- Electric welding produces sparks which can be discharged considerable distances at high velocity igniting flammable or exploding vapors and materials.
- Do not operate electric arc Welder in areas where flammable or explosive vapors are present.
- Do not use near combustible surfaces. Remove all flammable items within 35 feet of the welding area.
- Always keep a fire extinguisher nearby while welding.
- Use welding blankets to protect painted and or flammable surfaces; rubber weather-stripping, dash boards, engines, etc.
- Ensure power supply has properly rated wiring to handle power usage.

⚠ WARNING ELECTROMAGNETIC FIELDS CAN BE A HEALTH HAZARD!

- The electromagnetic field that is generated during arc welding may interfere with various electrical and electronic devices such as cardiac pacemakers. Anyone using such devices should consult with their physician prior to performing any electric welding operations.
- Exposure to electromagnetic fields while welding may have other health effects which are not known.

⚠ WARNING ARC RAYS CAN BURN!

- Arc rays produce intense ultraviolet radiation which can burn exposed skin and cause eye damage. Use a shield with the proper filter (a minimum of #11) to protect your eyes from sparks and the rays of the arc when welding or when observing open arc welding (see ANSI Z49.1 and Z87.1 for safety standards).
- Use suitable clothing made from durable flame-resistant material to protect your skin.
- If other persons or pets are in the area of welding, use welding screens to protect bystanders from sparks and arc rays.

⚠ WARNING FUMES AND WELDING GASES CAN BE A HEALTH HAZARD!

- Fumes and gasses released during welding are hazardous. Do not breathe fumes that are produced by the welding operation. Wear an OSHA-approved respirator when welding.
- Always work in a properly ventilated area.
- Never weld coated materials including but not limited to: cadmium plated, galvanized, lead based paints.

⚠ CAUTION HOT METAL AND TOOLS WILL BURN!

- Electric welding heats metal and tools to temperatures that will cause severe burns!
- Use protective, heat resistant gloves and clothing when using Eastwood or any other welding equipment. Never touch welded work surface, torch tip or nozzle until they have completely cooled

WELDING PROCESS

Your Eastwood MIG135 can be used to form a large number of different joints and welds all of which will require practice and testing before using on an actual project piece. This welding process is just a baseline to get you started.

1. Refer to the 'Suggested Settings' chart which is located inside the side door of your Eastwood MIG135 as well as below in the instruction manual. From the chart select your baseline starting point for the recommended settings described in the chart.
2. Change the output polarity, if necessary, according to the welding wire's specifications. This welder comes set up to use Solid MIG wire. If using Flux Cored wire, the polarity will need to be changed.
3. Connect your ground clamp to the work pieces that are to be welded. Make sure the ground clamp contacts are placed on a clean piece of metal free of paint, grease, rust, oils, etc. It is recommended to place your ground clamp as close to the weld area as possible.
4. Assess your weld area and make sure the welding area is also cleaned of any paint, grease, rust, oils, etc.
5. Plug in the welder and switch to the ON position.
6. Open your gas valve on the bottle and adjust the flow rate if necessary.
7. Depress the MIG Gun trigger pointing the welding gun away from your body and then let go of the trigger and cut the wire back to ~1/4" stick out length.
8. Wearing your welding helmet, gloves, and long sleeve shirt and pants, put the end of the wire sticking out of the gun into the joint to be welded.
9. Position the MIG Gun so that it is perpendicular to the base metal with ~20° tilt back.
10. Depress the trigger to start the wire feed which starts the arc. NOTE: A push, perpendicular, or drag technique can be used to weld the pieces together; the type used depends on the type of joint as well as other influential conditions.
11. Once you depress the trigger and the arc has started, you will notice a molten puddle will form; this puddle is the weld bead and will follow the motion of the MIG Gun. Watching the size of the puddle dictates how fast you should be moving with the torch. If you burn through the material you are either moving too slow or you need to make some setting adjustments to the welder settings. If you're not penetrating the base metal you're either moving too fast or you need to make adjustments to the welder settings.
12. Release the trigger on the MIG Gun to stop the weld.
13. After finished welding, close the valve completely on the Shielding Gas Bottle.

SPOOL GUN WELDING OPERATION

Your Eastwood MIG135 can be used to weld aluminum utilizing a spool gun. The spool gun is sold as an accessory to the MIG135, and you will also need to purchase a cylinder of 100% Argon gas from your local welding supplier. This following welding process is just a baseline to get you started.

1. Refer to the 'Suggested Settings' chart which is located inside the side door of your welder. From the chart select your baseline starting point for the recommended settings described in the chart.
2. Ensure that the polarity is configured for DCEP welding.
3. Set the MIG / Spool Gun Selector Switch to 'Spool Gun'
4. Connect your ground clamp to the work pieces that are to be welded. Make sure the ground clamp contacts are placed on a clean piece of metal free of paint, grease, rust, oils, etc. It is recommended to place your ground clamp as close to the weld area as possible.
5. Assess your weld area and make sure the welding area is also cleaned of any paint, grease, rust, oils, etc. Aluminum has a layer of oxide on the surface that should be removed prior to welding.
6. Plug in the welder and switch to the ON position.
7. Open your gas valve on the bottle and adjust the flow rate if necessary.
8. Depress the spool gun trigger for a few seconds pointing the welding gun away from your body and then let go of the trigger and cut the wire back to ~3/4" stick out length.
9. Wearing your welding helmet, gloves, and long sleeve shirt and pants, put the end of the wire sticking out of the spool gun into the joint to be welded.
10. Position the welding gun so that it is perpendicular to the base metal with 10-15° angle in the direction of push travel.
11. Depress the trigger to start the wire feed which starts the arc.
12. **NOTE:** When welding aluminum with a Spool Gun it is recommended to use a push technique. Using a drag technique will result in poor, dirty welds.
13. When welding aluminum a spray arc transfer is preferred rather than short arc transfer that can be more commonly used on steels. This method involves using a longer wire stick out (~3/4"). When the welder settings and technique have been dialed in the spray arc transfer should create a hissing sound and little or no spatter. Once positioned the trigger can be pulled and the weld started.
14. Release the trigger on the welding gun to stop the weld.
15. After finished welding, close the valve completely on the Shielding Gas Bottle.

OVERLOAD PROTECTION

Your Eastwood MIG135 is equipped with a temperature controller as well as an overload breaker. These two protection devices will protect your welder if the duty cycle is exceeded. If the output is exceeded, the internal breaker will trip and stop power supply to the drive motor although the fan will still run to cool the unit.

If the breaker tripped resulting from an overload, the circuit breaker button on the rear of the welder will extend out. This circuit breaker must be reset manually. Before resetting the circuit breaker button allow the welder to cool for a minimum of 15 minutes.

If there is no voltage output and the circuit breaker was not tripped, the internal thermal protector may have shut off the welder until it cools to normal operating temperature. This is an automatic function and does not require the user to manually reset anything.

TROUBLESHOOTING TABLE



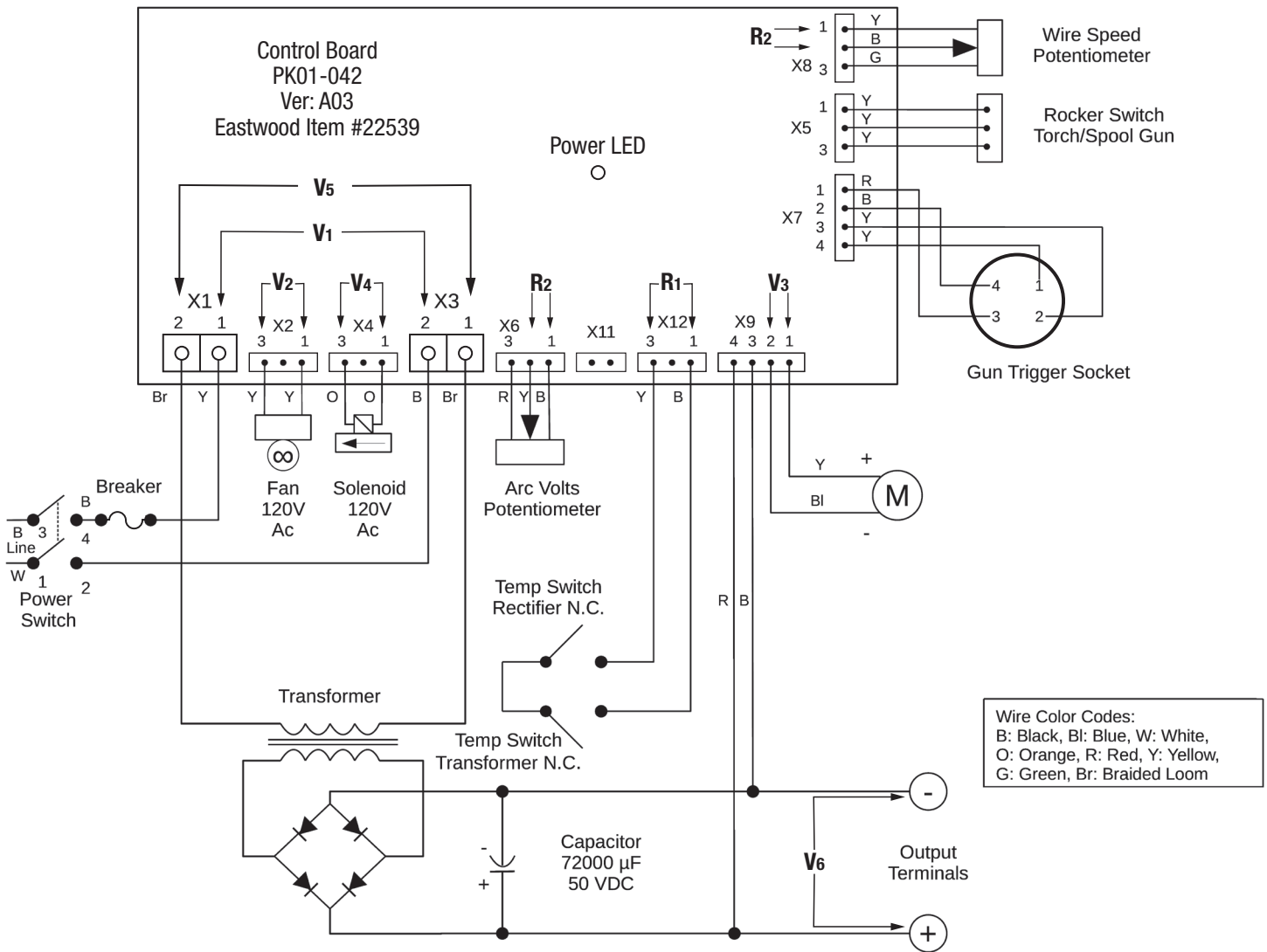
See page 16 for test points and values.
See page 18 for parts location.

SYMPTOM	POTENTIAL PROBLEM	DIAGNOSTIC TEST	SOLUTION
Power Switch in ON Position - Power light off - Fan not running	No or low A/C Voltage Source	Check A/C Voltage at Wall Outlet	Circuit breaker or wall circuit
	Loose or open connections at Power Switch	Visual and continuity test at switch connection	Repair loose/open connection
	Faulty Power Switch	Verify power switch function	Replace faulty power switch
	Faulty Overload Switch	Reset Overload Switch, faulty if trips again immediately	Replace faulty Overload Switch
	Faulty Control Board	Check for 120V AC across pin 1 on X1 and pin 2 on X3	If 120V AC and Power LED on Control Board OFF, replace Control Board
Power Switch in ON Position - Power light on - Fan not running	Open or Loose connection in Fan Circuit	120V AC across pin 1 and 2 on X2, Power LED on Control Board On, Visual/Continuity Check of Fan Connections	Repair loose/open in Fan circuit
	Faulty Fan	120V AC across fan terminals, Power LED on Control Board On	Replace Fan
	Faulty Control Board	0V AC across pin 1 and 2 on X2, Power LED on Control Board On	Replace Control Board
Unit Powers up - Torch Trigger Pulled - Gas Flowing - No Wire Feed - Drive Roller not Turning	Wire feed mode not selected	Check position of spool gun transfer switch	Move switch to wire feed mode
	Loose or Open Connection in Gun Trigger Circuit	Visual and continuity check of trigger wiring and connections	Repair loose/open connection
	Faulty Gun Trigger	Measure resistance across trigger terminals when trigger pulled (should = 0 ohms)	Replace Torch if switch faulty
	Faulty Control Board	With torch switch on, check voltage across pins 1 and 2 on X9 on Control Board.	If no voltage, replace control board.
	Faulty Drive Motor	With torch switch on, check voltage across pins 1 and 2 on X9 on Control Board .	If voltage (2-12V DC), replace Drive Motor
Unit Powers up - Torch Trigger Pulled - Gas Flowing - Drive Roller Turning - No or Erratic Wire Feed	Wire Feed set too low	Check wire feed setting on front panel	Adjust wire speed if needed
	Gun Cable damaged or bent	Visual check of Cable	Straighten or replace Cable
	Contact Tip blocked	Visual Check of Tip	Clear blockage or replace Contact Tip
	Incorrect Inlet Guide or Contact Tip	Confirm correct consumables for wire size	Replace with correct size consumables if needed
	Hub tension too high	Check wire Hub tension	Adjust tension as needed
	Drive Roller pressure too low	Check Drive Roller pressure	Adjust Drive Roller pressure as needed
	Incorrect Drive Roller	Confirm correct drive roller for wire size	Replace with correct drive roller if needed

TROUBLESHOOTING TABLE

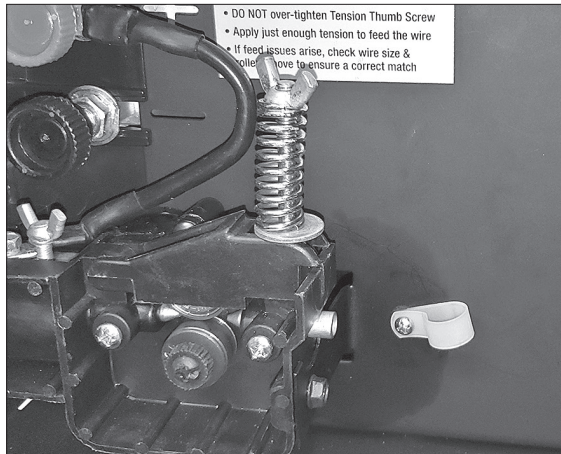
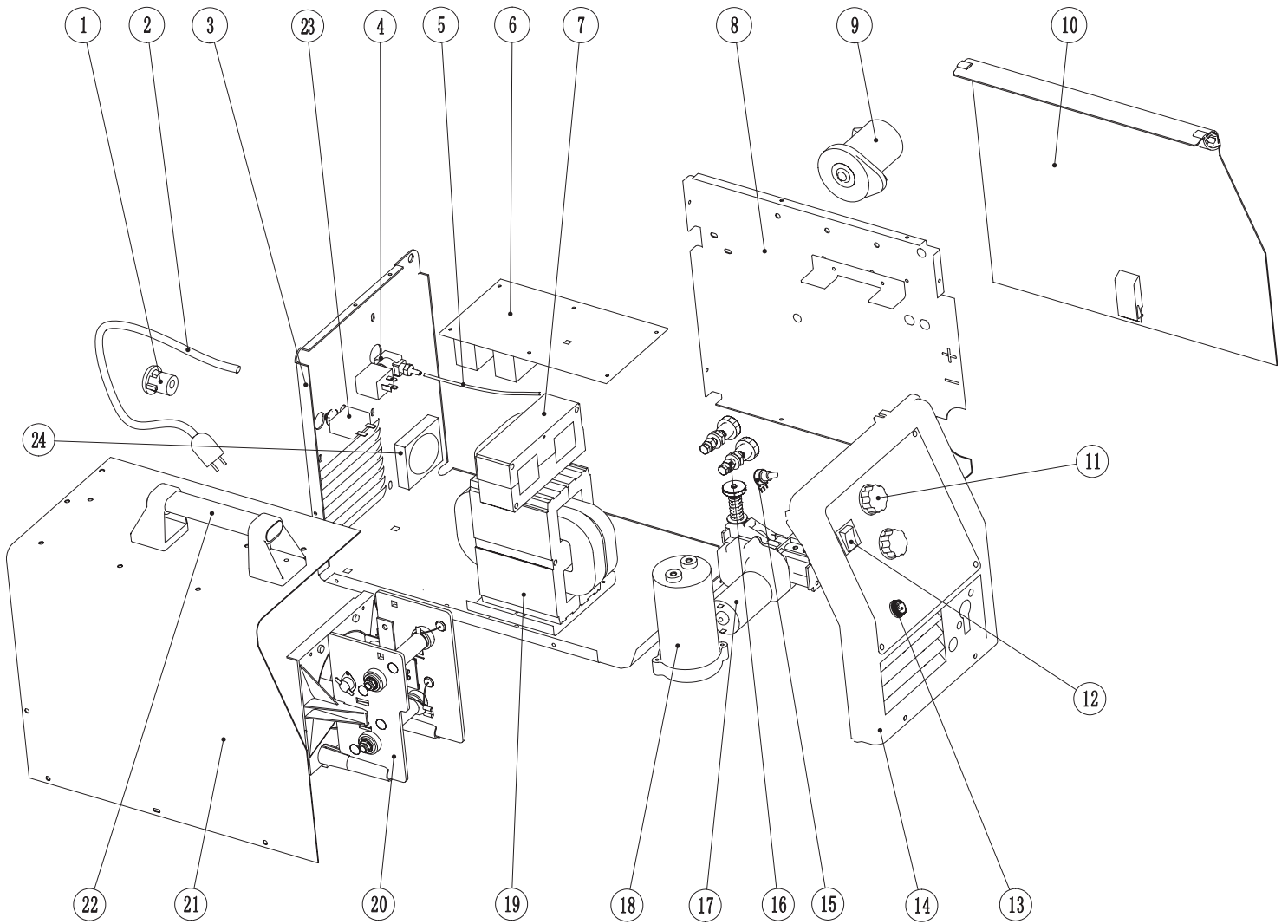
SYMPTOM	POTENTIAL PROBLEM	DIAGNOSTIC TEST	SOLUTION
Unit Powers up - Torch Trigger Pulled - Drive Roller Turning - Audible Click of Solenoid when Trigger Pulled - No Gas Flow	Gas bottle closed or empty	Check bottle fill and make sure valve is open	Fill gas bottle or open valve
	Gas Flow restriction	Check gas lines and connections for blockage for loose connections (including torch)	Re-attached, repair, or replace gas lines as needed
Unit Powers up - Torch Trigger Pulled - Drive Roller Turning - No Audible Click of Solenoid when Trigger Pulled - No Gas Flow	Open or loose wiring in Gas Solenoid Circuit	Visual and continuity check of gas solenoid wiring	Repair loose/open in Gas Solenoid Circuit
	Faulty Gas solenoid	Check voltage across pins 1 and 3 of plug X4 on Control Board with Gun Trigger Pulled. Should be 120V AC.	If voltage = 120V AC, replace Gas Solenoid.
	Faulty Control Board	Check voltage across pins 1 and 3 of plug X4 with Gun Trigger Pulled. Should be 120V AC.	If no voltage, replace Control Board
Unit Powers up - Drive Roller Turning - Gas flowing - Low or no weld output	Low Input Line Voltage	Check A/C Voltage at Wall Outlet (120V AC)	Repair cause of low line voltage
	Poor Ground Connection	Check quality of Ground Connection	Ensure good metal to metal ground contact
	Loose or Open Connection in Ground Circuit	Ground Cable for Loose Connections	Repair or replace ground cable
	Poor Weld Surface Condition	Check condition of welding surface for dirt, oil, paint, rust etc.	Clean surface with appropriate cleaner and/or wire brush
	Worn Contact Tip	Check condition of Contact Tip	Replace Contact Tip
	Damaged Torch	Check condition of torch weld cable for damage	Replace Torch
	Faulty Arc Volt Potentiometer	Disconnect and check resistance of potentiometer (0 – 10k Ohms across range)	If resistance not correct or not changing when dial moved, replace potentiometer
	Faulty Control Board	With torch trigger pulled and Arc Volts dial set to max, check voltage across pin 2 on X1 and pin 1 on X3 on Control Board.	If no voltage, replace Control Board
	Faulty Transformer or Rectifier	With torch trigger pulled and Arc Volts dial set to max, check voltage across pin 2 on X1 and pin 1 on X3 on Control Board.	If 120V present, Replace Welder

CIRCUIT DIAGRAMS WITH TEST VALUES



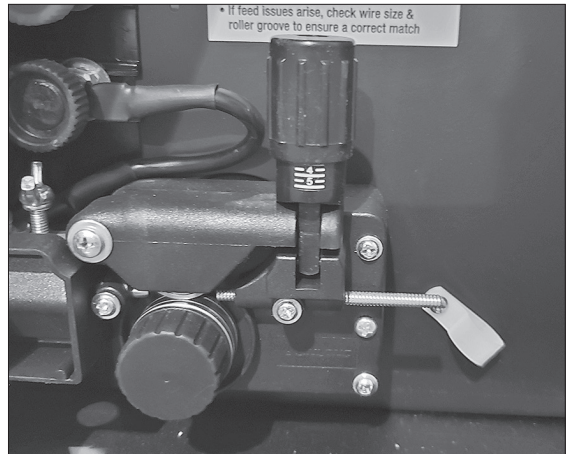
VOLTAGE READINGS	
V1	Input Voltage – 120V AC with Power Switch ON
V2	Fan Voltage – 120V AC with Power Switch ON
V3	Drive Motor Voltage – 2V to 12V DC across Wire Speed Potentiometer Range
V4	Gas Solenoid Voltage – 120V AC with Gun Trigger Pulled
V5	Transformer Input Voltage - 120V with Arc Volt Potentiometer at highest setting
V6	Output Voltage - 30V DC with Arc Volts Potentiometer set to maximum
R1	Disconnect plug X12 and check for continuity through temp switches (should = 0 Ohms)
R2	Resistance of potentiometers – 0 to 10 kOhms

EXPLODED VIEW WITH PARTS LIST



Type "A" Drive Motor

- DO NOT over-tighten Tension Thumb Screw
- Apply just enough tension to feed the wire
- If feed issues arise, check wire size & roller groove to ensure a correct match



Type "B" Drive Motor

- If feed issues arise, check wire size & roller groove to ensure a correct match

REF #	ITEM #	DESCRIPTION
Not Shown	14296	MIG Torch (Old Style - Spade Connector - Pre 2013)
Not Shown	20171	MIG Torch (New Style - Metal Aviation Connector)
Not Shown	12238	Gas/Air Regulator
Not Shown	21264	Ground Cable
1	Not Available	Power Cable Strain Relief
2	Not Available	Power Cable
3	Not Available	Bottom Housing
4	14431	Gas/Air Solenoid
5	22543	Gas/Air Hose
6	Not Available	Main Control Board (Pre-2013)
6	22529	Main Control Board (2013+) Note - Connector locations may differ between board revisions but the functions are the same
7	Not Available	Reactor
8	Not Available	Inner Partition
9	Not Available	Wire Spool Reel
Not Shown	22533	Wire Spool Round Plastic Plate
10	Not Available	Right Panel/Door
Not Shown	22534	Hinge Set
11	Not Available	Front Panel Knob
12	22513	Power Switch
13	Not Available	MIG Gun Trigger Connector
14	Not Available	Front Panel
15	22532	Potentiometer
16	Not Available	Torch Terminal
17	14428	Drive Motor (Old Style - Pre-2018 - see Picture - Type A)
17		Drive Motor (New Style - see Picture - Type B)
18	22530	Capacitor
19	Not Available	Main Transformer
20	Not Available	Rectifier Module
21	Not Available	Left Housing Panel
22	Not Available	Handle
23		Overload Switch
24	22530	Fan

See our complete line of consumables and parts at www.eastwood.com

If you have any questions about the use of this product, please contact

The Eastwood Technical Assistance Service Department: 800.343.9353 >> email: tech@eastwood.com

The Eastwood Company 263 Shoemaker Road, Pottstown, PA 19464, USA

800.343.9353 eastwood.com