

EASTWOOD INTERNAL FRAME COATING is designed to encapsulate and prevent internal rust. Formulated with an impenetrable Phenolic Resin, blended with Zinc Phosphate to stop rust and protect against any further corrosion.

DIRECTIONS – READ ALL INSTRUCTIONS BEFORE USING THIS PRODUCT!

1. Always wear eye protection and chemical resistant gloves when using.
2. Shake can vigorously for at least 1 minute before and occasionally during use.
3. Insert extension tube into spray nozzle.
4. Insert extension nozzle into frame openings, bolt holes, etc.
5. Depress spray button and apply coating while pulling the extension nozzle back from the opening.
6. Continue in all areas you can for complete coverage. Internal Frame Coating's viscosity will "creep" into deep pockets and under heavy rust to assure coverage.
7. To clean the extension tube, attach to Eastwood's PRE Painting Prep. A few short bursts will clean out the tube and brass nozzle.

IMPORTANT: To prevent clogging, after each use, invert the can and spray a few short blasts to clear the valve. Spray PRE or solvent through extension nozzle to clean.

CONTAINS: Dimethyl Ether (CAS #115-10-6), Acetone (CAS #67-64-1), N-Hexane (CAS #110-54-3), Light Aromatic Solvent Naphtha

(CAS #64742-95-6), Methyl N-Propyl Ketone (CAS #107-87-9), Toluene (CAS #108-88-3), Methyl Acetate (CAS #79-20-9), 4-Chlorobenzotrifluoride (CAS #98-56-6) and Carbon Black (CAS #1333-86-4). 57% of the ingredients have an unknown acute toxicity.

DANGER: Extremely flammable aerosol. Contains gas under pressure; may explode if heated. Causes serious eye irritation. May cause drowsiness or dizziness. Suspected of causing cancer. Suspected of damaging fertility or the unborn child. May cause damage to organs through prolonged or repeated exposure.

PRECAUTIONARY STATEMENTS: Do not handle until all safety precautions have been read and understood. Keep away from heat, hot surfaces, sparks, open flames and other ignition sources. No smoking. Do not spray on an open flame or other ignition source. Pressurized container: Do not pierce or burn, even after use. Do not breathe spray. Wash hands thoroughly after handling. Use only outdoors or in a well-ventilated area. Wear protective gloves and eye protection. Protect from sunlight. Store in a well-ventilated place. Do not expose to temperatures exceeding 50°C/122°F. Dispose of contents and container in accordance with applicable regulations.

FIRST AID: If exposed, concerned or feel unwell: Call a physician.

IF INHALED: Remove person to fresh air and keep comfortable for breathing. IF IN EYES: Rinse cautiously with water for several minutes. Remove contact lenses, if present and easy to do. Continue rinsing. If eye irritation persists: Get medical advice.



WARNING:
Cancer and Reproductive Harm –
www.P65Warnings.ca.gov

VOC CONTENT: ABP MAX MIR 0.90
KEEP OUT OF THE REACH OF CHILDREN

Only in the Event of a Chemical Emergency Involving A Spill, Leaks, Fire, or Exposure Call Chemtrec Toll Free Day or Night: 1-800-424-9300
International Call Collect: (202) 483-7616

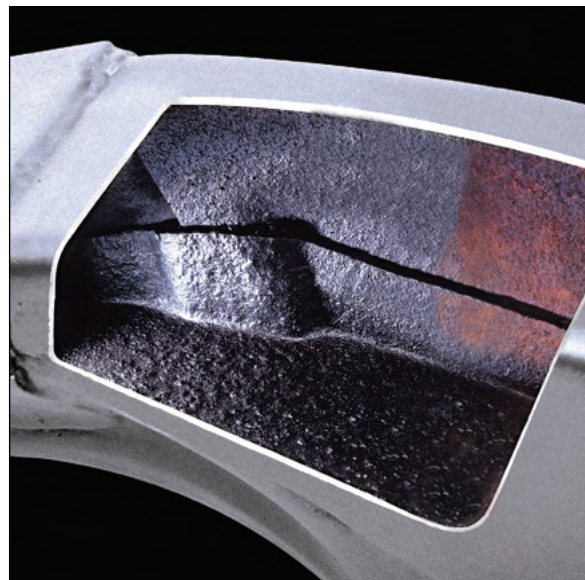
Manufactured for The Eastwood Company,
263 Shoemaker Road, Pottstown, PA 19464 1-800-343-9353 www.eastwood.com
© Copyright 2018 Easthill Group, Inc. Made in USA Label #15275ZL 5/18 Rev 3



DO THE JOB RIGHT.®

INTERNAL FRAME COATING

BLACK FINISH



- Converts, Encapsulates and Seals Rust on Internal Frame Surfaces
- Phenolic Resin with Zinc Additive Eliminates Future Corrosion



Scan for product info

DANGER:
CONTENTS EXTREMELY FLAMMABLE AND UNDER PRESSURE. SKIN IRRITANT.
Read Precautions On Rear Panel Before Use.

Net wt. 14 oz. / 397 grams

15275Z

