

Eastwood

DO THE JOB RIGHT.

Part #15981

CONCOURS PRO PAINT GUN REBUILD KIT INSTRUCTIONS



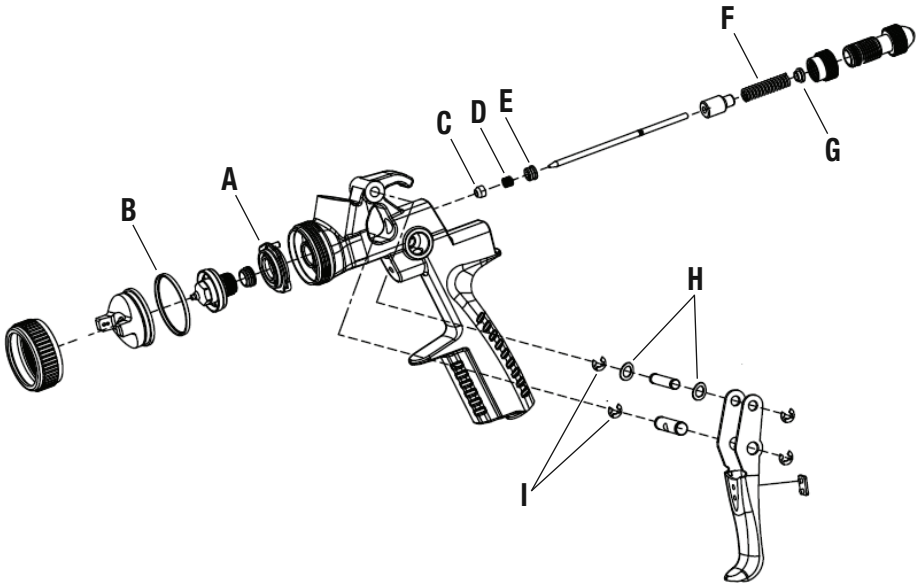
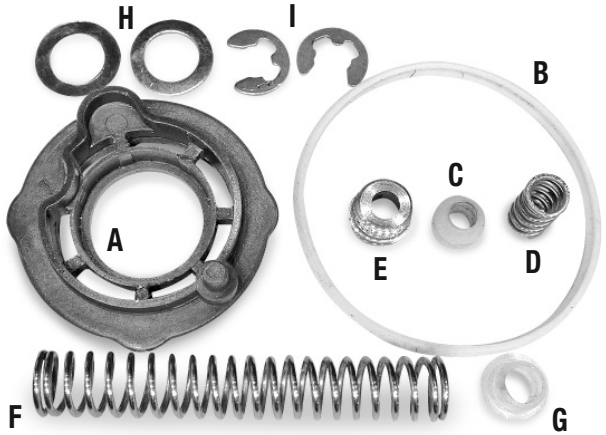
Made in China Item #15981

The **EASTWOOD CONCURS PRO PAINT GUN REBUILD KIT** includes the common wear parts necessary to restore like-new performance to your Concours Pro Gun.

CONTENTS

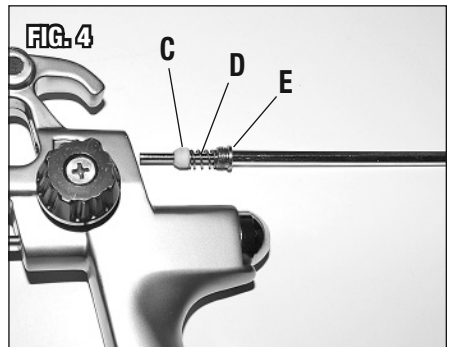
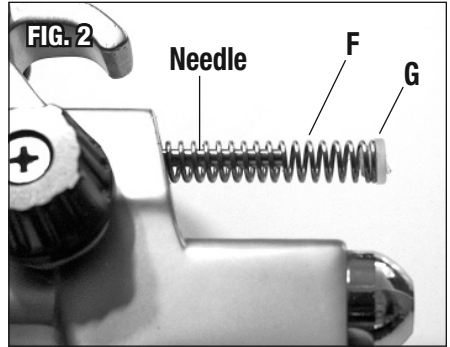
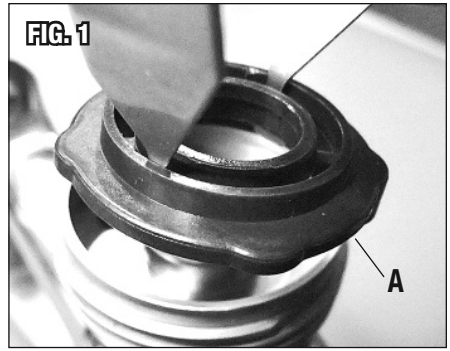
Carefully unpack your package and check for the following items:

- (1) Air Manifold: **A**
- (1) Seal Ring: **B**
- (1) Packing Ring: **C**
- (1) Packing Spring: **D**
- (1) Packing Nut: **E**
- (1) Needle Spring: **F**
- (1) Needle Spring Bushing: **G**
- (2) Thrust Washers: **H**
- (2) E-Clips: **I**



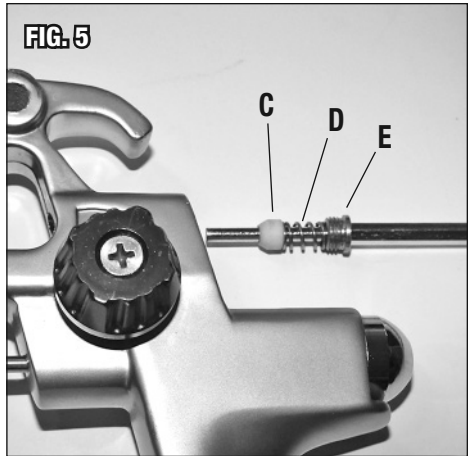
PAINT GUN DISASSEMBLY FOR REBUILDING

1. Remove Air Cap and pick out white Seal Ring (B).
2. Remove Nozzle with a 12mm wrench. (Included with Paint Gun).
3. Remove brown plastic Air Manifold (A). (note position of locating pin on manifold to indexing hole in Paint Gun body for re-assembly) with special removal tool (included with Paint Gun) by placing hooks facing downward, through manifold openings, under spokes and pulling directly outward toward front of Gun Body (FIG. 1).
4. Unthread and remove Fluid Control Knob from rear of Paint Gun body.
5. Carefully remove Needle with Needle Spring (F) & Needle Spring Bushing (G) by firmly gripping rear of Needle and pulling out through rear of Paint Gun body (FIG 2).
6. Lay the gun body on its right side and remove the E-Clips (I) located on the Trigger Pivot Shaft and Needle Actuation Shaft using a jewelers screwdriver, knife or similar tool (FIG 3).
7. Remove Trigger Pivot Shaft with Thrust Washers (H) and Needle Actuation Shaft.
8. Insert and seat the round pilot end of the special Packing Hex Key Wrench (included with Paint Gun) through the rear of the Gun Body and turn in a counter-clockwise direction to unthread Packing Nut (E).
9. Withdraw the special Packing Hex Key Wrench (included with Paint Gun) with the Packing Nut (E), Packing Spring (D) & Packing Ring (C) (FIG 4).
10. Inspect and clean Gun Body as required.



PAINT GUN REASSEMBLY

1. Place the Packing Ring (C), Packing Spring (D) & Packing Nut (E) stacked in the correct order over the round pilot of the special Packing Hex Key Wrench.
2. Insert the Packing Hex Key Wrench with packing components stacked in place into the rear of the Paint Gun and rotate in a clockwise direction to tighten the Packing Nut (FIG 5).
3. Re-install the Trigger Pivot Shaft and Needle Actuation Shafts through the Gun Body and Trigger.



NOTE: Be sure to install the Thrust Washers (H) in the proper location between the Trigger and Gun Body.

4. Snap the E-Clips (I) into the grooves on the Pivot Shafts. Note: Using the blade of a screw driver to exert force at the back of the E-Clip helps to seat them.
5. Replace the brown plastic Air Manifold (be sure to correctly position the locating pin on manifold into the indexing bore in Paint Gun body).
6. Replace Needle by sliding into bore in rear of Paint Gun Body until it seats.
7. Slide Needle Spring (F) with Needle Spring Bushing (G) over the rear of the Needle.
8. Place Fluid Control Knob over Needle and Spring, then thread into rear of Gun Body.
9. Replace Nozzle by threading into front of Gun Body and tighten firmly with included 12mm wrench (do not-over tighten).
10. Insert Seal Ring (B) into Annular Groove of Air Cap. **NOTE:** The larger side of the Seal Ring is oriented outward.
11. Replace Air cap by threading Retaining Ring onto Gun Body. Make sure the air horns of the Air Cap are oriented properly.
12. Clean the interior passages of the paint gun before use with a suitable solvent to remove any manufacturing oils or impurities before use.

Your Eastwood Concours Pro Paint Gun is now rebuilt and ready for use.

If you have any questions about the use of this product, please contact

The Eastwood Technical Assistance Service Department: 800.544.5118 >> email: techhelp@eastwood.com

PDF version of this manual is available online >> eastwood.com/15981manual

The Eastwood Company 263 Shoemaker Road, Pottstown, PA 19464, USA

US and Canada: 800.345.1178 Outside US: 610.718.8335

Fax: 610.323.6268 eastwood.com