

Eastwood[®]

DO THE JOB RIGHT.[®]

Item #15982

CONCOURS PRO DETAIL PAINT GUN REBUILD KIT INSTRUCTIONS

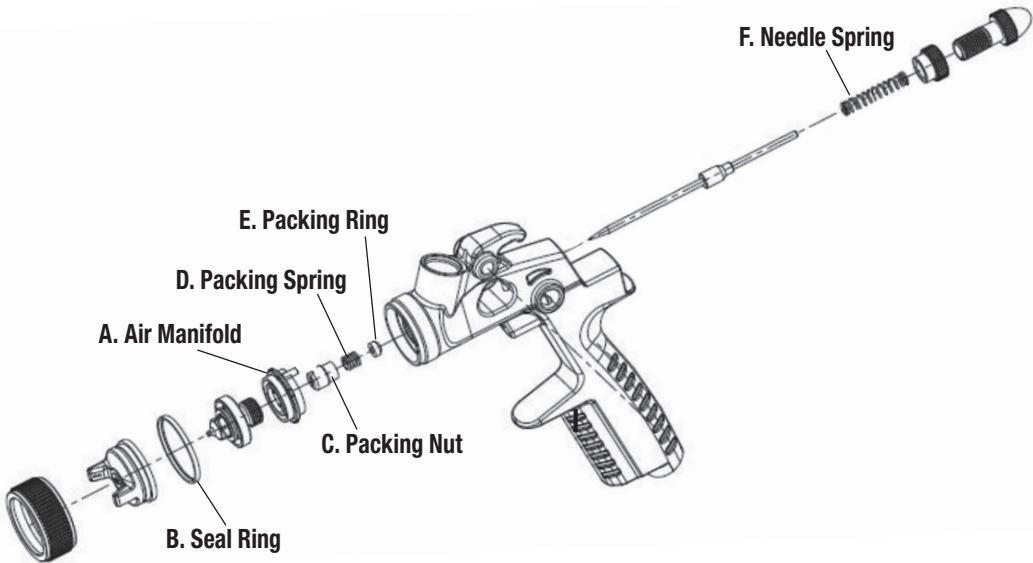
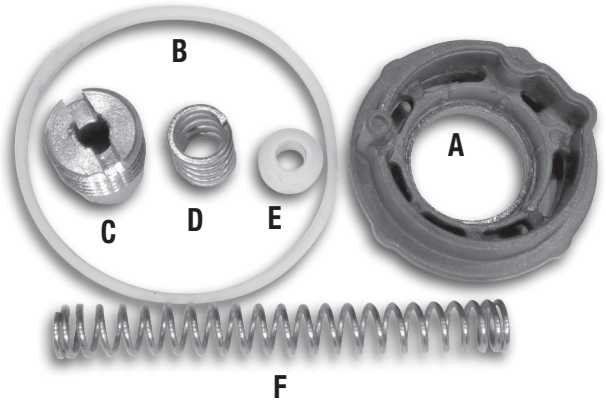


The **EASTWOOD CONOURS PRO DETAIL PAINT GUN REBUILD KIT** includes the common wear parts necessary to restore like-new performance to your Concours Pro Detail Gun.

CONTENTS

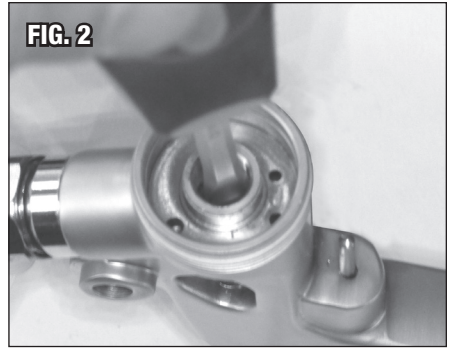
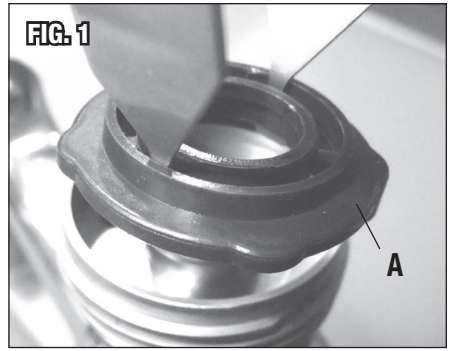
Check for the following items:

- (1) Air Manifold: **A**
- (1) Seal Ring: **B**
- (1) Packing Nut: **C**
- (1) Packing Spring: **D**
- (1) Packing Ring: **E**
- (1) Needle Spring: **F**



PAINT GUN DISASSEMBLY FOR REBUILDING

1. Remove Air Cap and pick out the white Seal Ring (**B**).
2. Remove Nozzle with a 12mm wrench (Included with Paint Gun).
3. Remove brown plastic Air Manifold (**A**) (note position of locating pin on Manifold to indexing hole in Paint Gun body for re-assembly) with special removal tool (included with Paint Gun) by placing hooks facing downward, through manifold openings, under spokes and pulling **directly outward** toward front of Gun Body (**FIG. 1**).
4. Unthread and remove Fluid Control Knob from rear of Paint Gun body.
5. Carefully remove Needle with Needle Spring (**F**) by firmly gripping rear of Needle and pulling out through rear of Paint Gun body.
6. Insert a medium, flat blade screwdriver through the front of the Gun Body and turn in a counter-clockwise direction to unthread Packing Nut (**C**) (**FIG. 2**).
7. Withdraw the Packing Nut (**C**), Packing Spring (**D**) and Packing Ring (**E**).
8. Inspect and clean Gun Body as required.



SEE BACK COVER FOR PAINT GUN REASSEMBLY

PAINT GUN REASSEMBLY

1. Place the Packing Ring (**E**), Packing Spring (**D**) and Packing Nut (**C**) stacked in the correct order into the front of the Paint Gun Body and using a medium blade screwdriver, rotate in a clockwise direction to tighten the Packing Nut.
2. Replace the brown plastic Air Manifold (**A**) **NOTE:** be sure to correctly position the locating pin on manifold into the indexing hole in Paint Gun body.
3. Install Needle by sliding into bore in rear of Paint Gun body until it seats.
4. Slide Needle Spring (**F**) over the rear of the Needle.
5. Place Fluid Control Knob over Needle & Spring then thread into rear of Gun Body.
6. Replace Nozzle by threading into front of Gun Body and tighten firmly with included 12mm wrench. (do not-over tighten).
7. Install Seal Ring (**B**) into the annular groove of the Air Cap.
NOTE: The larger diameter of the Seal Ring faces outward.
8. Replace Air cap by threading Retaining Ring onto Gun Body. Make sure the air horns of the Air Cap are oriented properly.
9. Clean the interior passages of the paint gun before use with a suitable solvent to remove any manufacturing oils or impurities before use.
10. Your Eastwood Concours Pro Detail Paint Gun is now rebuilt and ready for use.

If you have any questions about the use of this product, please contact

The Eastwood Technical Assistance Service Department: 800.343.9353 >> email: tech@eastwood.com

PDF version of this manual is available at eastwood.com

The Eastwood Company 263 Shoemaker Road, Pottstown, PA 19464, USA

800.343.9353 eastwood.com