

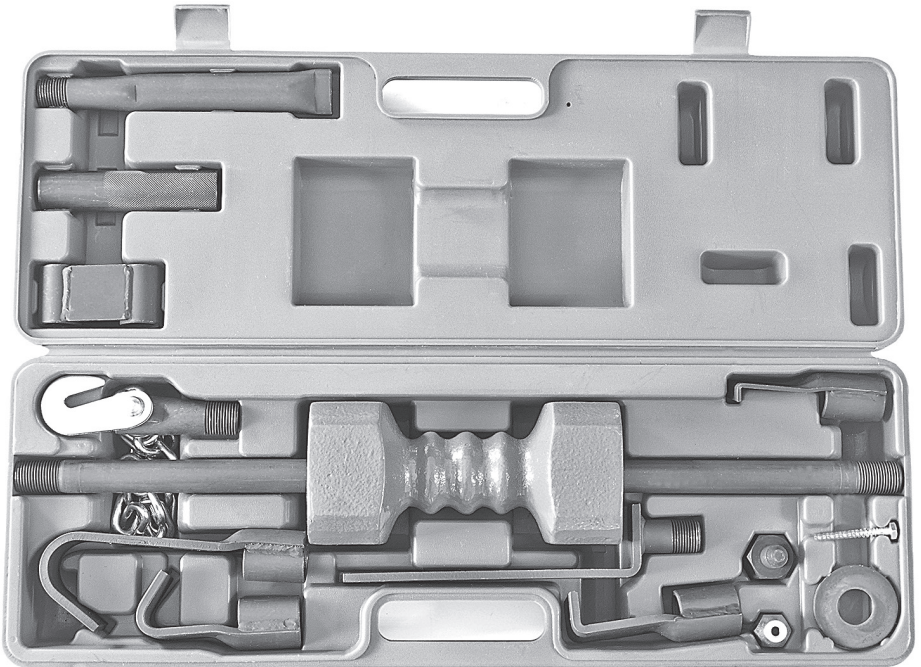
Eastwood[®]

DO THE JOB RIGHT.[®]

Item #16196

14LB. SLIDE HAMMER KIT

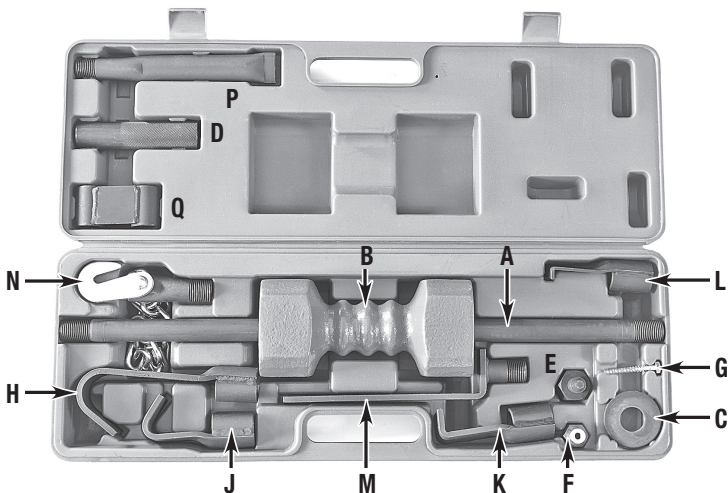
INSTRUCTIONS



The 17 piece **EASTWOOD 14LB. SLIDE HAMMER KIT** includes all the common attachment and hook configurations to perform heavy-duty metal moving when doing auto body repairs and reconstruction. The solid cast-iron slide weight and all steel, quick-change threaded design has 7/8-14 threads to fit other commercially available attachments.

CONTENTS

- (1) 7/8" x 23" Tubular Slide Shaft with 7/8-14, Solid Threaded Ends [A]
- (1) 14 lb. [6.4 kg] Slide Hammer Weight [B]
- (1) 2-1/2" x 5/32" Impact Ring [C]
- (1) 1-1/8" x 4-3/4" Knurled Handle [D]
- (1) 1-1/8" Hex Screw Puller Head [E]
- (1) Screw Retainer (1/4" diameter screw shank capacity) [F]
- (1) 1/4" x 1-1/2" Lag Screw [G]
- (1) 2" x 7" "J" Hook [H]
- (1) 1-1/2" x 4" "J" Hook [J]
- (1) 1-1/2" x 4-1/2" "L" Hook [K]
- (1) 1-1/2" x 4" Low-Profile "L" Hook [L]
- (1) 1-1/2" x 8-1/2" Drive-Bar [M]
- (1) 16" Chain Hook [N]
- (1) 7" Wedge Bar [P]
- (1) 2" Offset Coupler [Q]
- (1) Heavy-Duty Blow-Molded Case



SAFETY INFORMATION

The following explanations are displayed in this manual, on the labeling, and on all other information provided with this product:

DANGER

DANGER indicates a hazardous situation which, if not avoided, will result in death or serious injury.

WARNING

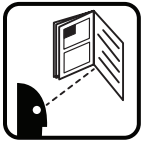
WARNING indicates a hazardous situation which, if not avoided, could result in death or serious injury.

CAUTION

CAUTION used with the safety alert symbol, indicates a hazardous situation which, if not avoided, could result in minor or moderate injury.

NOTICE

NOTICE is used to address practices not related to personal injury.



READ INSTRUCTIONS

- Thoroughly read and understand these product instructions before using the Slide Hammer.
- Keep these product instructions for future reference.



WARNING IMPROPER MOTOR VEHICLE REPAIR WORK CAN RESULT IN INJURY OR DEATH!

- Performing automotive repair work can cause injury, death and vehicle accidents. **DO NOT** attempt to use this tool or begin work without proper training and a thorough understanding of motor vehicle mechanical systems and repair procedures.



CAUTION PINCH HAZARD!

- Keep hands and fingers away from moving components.



CAUTION EYE INJURY HAZARD!

- Chips may be ejected from striking components causing eye injury. Wear ANSI approved eye protection while using.



CAUTION FALL HAZARD!

- Parts may suddenly release while being pulled. Failure to ensure proper footing can quickly result in a fall which could inflict serious personal injury or property damage.

SLIDE HAMMER SET-UP

- Thread the Knurled Handle [D] fully onto the Tubular Slide Shaft [A] until it seats.

⚠ CAUTION INJURY HAZARD!

Be sure to fully engage threads. Failure to do so may result in sudden release of Slide Hammer weight causing injury and/or property and tool damage.

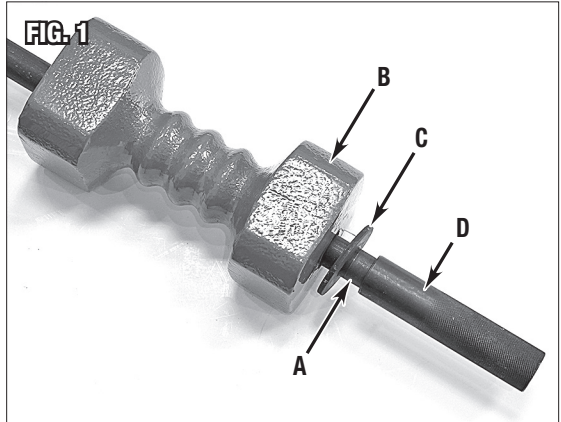
- Slide the Impact Ring [C] over the Tubular Slide Shaft [A] until it seats against the Knurled Handle [D] (FIG 1).

⚠ CAUTION

PINCH HAZARD!

Keep hands and fingers away from moving components.

- Carefully slide the 14lb. [6.4 kg] Slide Hammer Weight [B] over the Tubular Slide Shaft [A] (FIG 1).



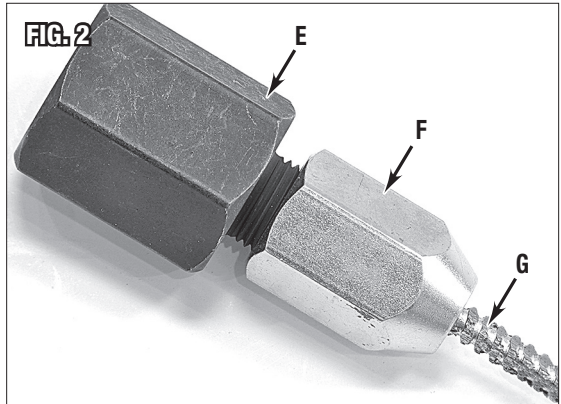
SCREW PULLER HEAD SET-UP

- Insert a 1/4" shank screw ([G] or similar) into the Screw Retainer [F].
- Thread the Screw Retainer [F] onto the Hex Screw Puller Head [E] (FIG 2).

⚠ CAUTION

INJURY HAZARD!

Be sure to fully engage threads. Failure to do so may result in sudden release of Slide Hammer weight causing injury and/or property and tool damage.



SLIDE HAMMER CONFIGURATION

- There are a vast number of configurations and combinations of attachments possible with this Body Puller Set all determined by the particular job to be done.
- The following photos display only several of the possible combinations (FIGS 3, 4, 5, 6).

FIG. 3

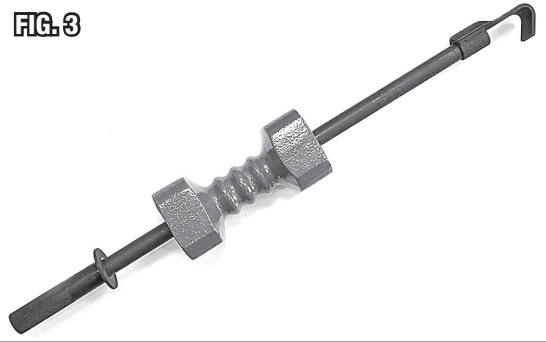


FIG. 4

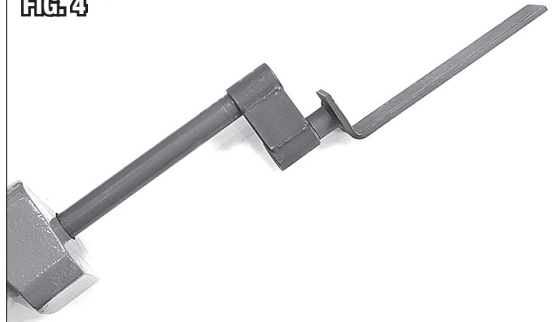


FIG. 5



FIG. 6



SLIDE HAMMER USE

- Thread the attachment or combination fully onto the Tubular Slide Shaft **[A]** until it seats.

⚠ CAUTION INJURY HAZARD!

Be sure to fully engage threads. Failure to do so may result in sudden release of Slide Hammer weight causing injury and/or property and tool damage.

- While holding the Knurled Handle **[D]** securely in one hand and the Slide Hammer Weight **[B]** securely in the other, position the attachment on the work then carefully slide the Slide Hammer Weight **[B]** outward as close to the attachment end of the Tubular Slide Shaft **[A]** as possible.
- Quickly and sharply pull the Slide Hammer Weight **[B]** back toward the Handle allowing it to slam violently against the Impact Ring **[C]**.
- Reposition attachment and repeat as often as necessary to move metal as needed.
- When work is completed, disassemble all components and store in the included Blow Molded Case.

If you have any questions about the use of this product, please contact

The Eastwood Technical Assistance Service Department: 800.343.9353 >> email: techelp@eastwood.com

PDF version of this manual is available at eastwood.com

The Eastwood Company 263 Shoemaker Road, Pottstown, PA 19464, USA

800.343.9353 eastwood.com