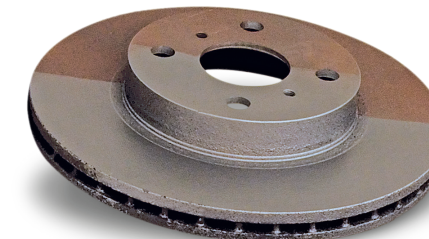




DO THE JOB RIGHT.®

# FAST ETCH

## ACID-BASED RUST REMOVER AND METAL PREP



- Ideal Prep for Painting and Powder Coating
- Leaves Zinc Phosphate Coating
- Promotes Adhesion and Prevents Rust

**DANGER! CAUSES SEVERE SKIN BURNS AND EYE DAMAGE. MAY BE CORROSIVE TO METALS.**  
(See additional precautionary statements on back panel)

NET CONTENTS 128 FL OZ (3.785 LITERS)

19418ZP



Scan for product info

### DIRECTIONS – READ ALL INSTRUCTIONS BEFORE USING THIS PRODUCT!

1. Metal surfaces to be treated must be free of grease, oil, and wax. Remove loose rust, blistered paint, and scale.
2. Temperature and the extent of corrosion determines how quickly Fast Etch works. Best working temperature is above 70°F but not over 100°F. Shake before using.
3. Apply Fast Etch with brush, rag, roller, spray, or simply dip the corroded metal directly into the solution. To use on heavy rust, on hot days, or on vertical surfaces, saturate a clean cloth with Fast Etch, place on the part, and cover with plastic to avoid evaporation.
4. Keep the treated metal surface moist with Fast Etch. Do not allow to dry for at least 30 minutes until the surface has a uniform gray appearance. If air bubbles appear, smooth them out with a cloth or brush. Avoid wasteful run-off. If the metal surface is not free of rust, repeat the process outlined above. Wipe the still wet part with PRE Painting Prep or acetone to remove excess Fast Etch. Treated surfaces will be coated with zinc phosphate. Prime the surface before painting.
5. Excess Fast Etch should be removed from painted or chrome plated surfaces with mild detergent and water as soon as possible to prevent discoloration. Wipe dry. Fast Etch is reusable. Do not store in metal containers. Avoid using Fast Etch longer than required to completely remove rust as this will weaken the metal.

**WARRANTY:** All recommendations for the use of EASTWOOD products are based on tests and experience believed to be reliable. It is the responsibility of the purchaser to determine the suitability of this product for its intended use. Since the methods of use, conditions of application and the application itself are beyond the manufacturer's and seller's control, product warranty is restricted to replacement of materials only. No other warranty, written or oral, is expressed or implied.

Only in the Event of a Chemical Emergency Involving A Spill, Leaks, Fire, or Exposure Call Chemtrec Toll Free Day or Night: 1-800-424-9300  
International Call Collect: (202) 483-7616

Manufactured for The Eastwood Company, 263 Shoemaker Road, Pottstown, PA 19464  
1-800-343-9353 www.eastwood.com © Copyright 2018 Easthill Group, Inc. Made in USA



### ACID-BASED METAL CONDITIONER



**DANGER:** CAUSES SEVERE SKIN BURNS AND EYE DAMAGE. MAY BE CORROSIVE TO METALS.

**PRECAUTIONS:** Keep only in original container. Do not transfer into other containers. Keep container closed tightly when not in use. Wash skin thoroughly after handling. Use personal safety equipment including impervious gloves, protective clothing, splash goggles or other eye protection and face protection. Do not breathe mists or fumes. Use a NIOSH-approved (TC19C or equivalent) respirator if spray applying this material. Absorb spillage to prevent material damage. Store locked up. Dispose of unused amounts and empty container with an approved waste disposal facility.

**FIRST AID:** IF IN EYES: Rinse cautiously with water for several minutes. Remove contact lenses if present and easy to do, then continue rinsing. IF SWALLOWED: Do NOT induce vomiting. Rinse mouth with water and take victim immediately to hospital. IF ON SKIN (or hair): Remove all contaminated clothing immediately. Rinse skin with water. Wash contaminated clothing before reuse. IF INHALED: Remove victim to fresh air and keep at rest in a position comfortable for breathing. Immediately call a POISON CENTER or get other medical attention.

FOR PROFESSIONAL USE ONLY. NOT FOR SALE TO OR USE BY THE GENERAL PUBLIC. KEEP OUT OF REACH OF CHILDREN AND PETS AT ALL TIMES. REFER TO SAFETY DATA SHEET FOR FURTHER HEALTH, SAFETY AND FIRST AID INFORMATION.

**CONTAINS:** Water (7732-18-5),  
Phosphoric Acid (7664-38-2)

**VOC INFORMATION:** This is a zero-VOC acid-based metal conditioner.

OSHA HMIS RATING	
Health	2
Flammability	0
Personal Hazard	0
Personal Protection	H