

WET/DRY VACUUM

INSTRUCTIONS



The Rockwood Shop Vacuum includes a powerful, high efficiency 10-amp motor with a large 9-gallon capacity and offers full wet or dry vacuuming capability. The extra-length, 15' hose provides generous reaching capability for most any vacuuming task.

INCLUDES

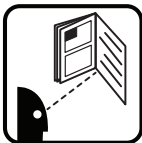
- (1) Removable 120 VAC, double insulated Motor Unit with 8.5' power cord
- (1) Canister
- (1) 15' x 1-1/2" flexible vacuuming hose with integral wand
- (4) Swivel casters
- (4) Canister supports
- (4) Phillips head screws
- (1) 10" Wet or Dry Suction Attachment
- (2) 19" Extension Tubes
- (1) Crevice Tool Attachment
- (2) Bag Filters
- (1) Foam Motor Filter(s)



SPECIFICATIONS

- 120 VAC, 10-amp motor, 1,200 Watt
- 9-gallon canister capacity
- Vacuum: 72" sealed pressure (18 kPa)
- Sound levels: 82 dB @ motor output, 75 dB @ 5'
- Complies with ETL product safety requirements

SAFETY INFORMATION



READ INSTRUCTIONS!

Thoroughly read and understand this instruction manual before using. Save manual for future reference.



FIRE AND EXPLOSION HAZARD!

- DO NOT allow flammable vapors to enter the air intake of the Motor Unit!
- Never use to vacuum a flammable coating or solvent.



ELECTRIC SHOCK HAZARD!

- Never operate or store unit in damp or wet conditions.
- If an extension cord is required, a 25' cord is recommended not to exceed 50'. All extension cords must be 18 AWG or greater.
- Do Not run Motor Unit when detached from Canister.
- Always unplug Vacuum Cleaner before changing bag, emptying canister, cleaning or servicing the foam motor filter.

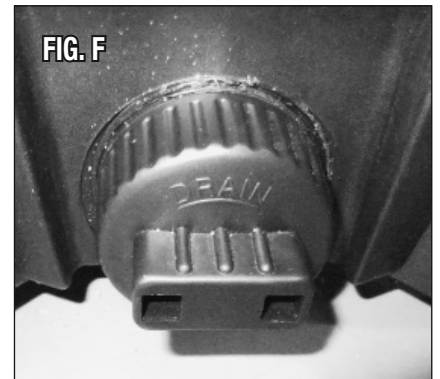
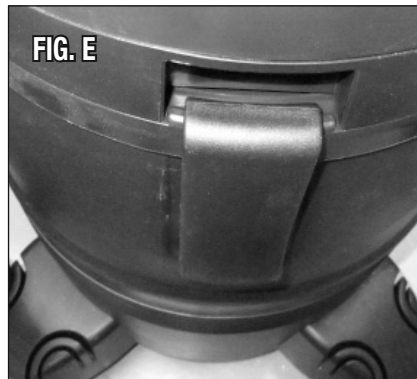
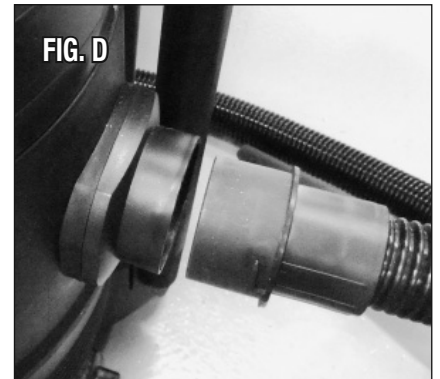
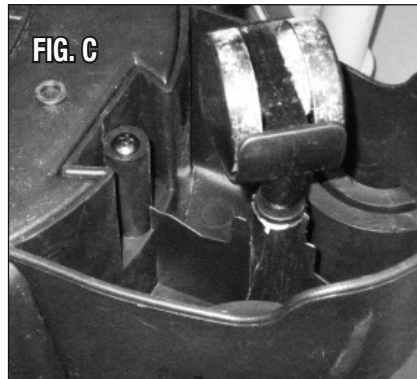
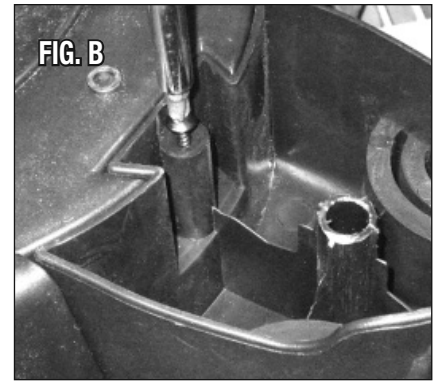
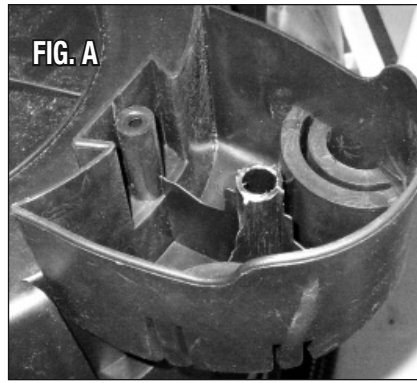


HEALTH HAZARD!

- Avoid breathing possible dust produced by the vacuum outlet. Always wear appropriate NIOSH approved breathing apparatus and use in a well ventilated area.
- Never allow the outlet of the Motor Unit to be directed to yourself or other persons or pets.
- This device emits higher sound levels, the use of appropriate hearing protection is strongly recommended. Never operate the vacuum with the inlet or hose blocked.

BASIC ASSEMBLY

- Remove all components from carton, identify them and become familiar with their purpose.
- Turn Canister upside down and locate (4) Canister Supports into keyed notches at 4 locations on underside of Canister. Gently but firmly tap them downward until the underside of the Canister Supports are flush with the Canister underside (**Fig A**).
- Place (4) Phillips Head Screws into inboard holes of Canister Supports and tighten (**Fig B**).
- Insert the round metal shafts of the Swivel Casters into the 4 holes in the underside of the Canister. Gently tap into place until seated (**Fig C**).
- Attach the Vacuum Hose to the Canister by slipping end with the larger slotted fitting into Canister inlet. Push in then twist Clockwise to lock in place (**Fig D**).
- Insert end of Vacuum Hose with the smaller, curved pipe into the desired attachment or extension tubes as required. This is a press-fit, push firmly to seat.
- Place Motor Unit over canister with 2 side latches positioned over recesses in sides of Canister and move latches downward (**Fig E**).
- Make sure the threaded cap over the drain on the lower side of the Canister is tightly closed (**Fig F**).



SET-UP

For Dry Vacuuming:

Unfold Bag Filter and place the rubber seal at the bag opening over inlet fitting, into groove and against inside wall of Canister (**Fig G**).

For Wet Vacuuming:

- Unplug Vacuum from power source
- Unlatch Motor Unit
- **IMPORTANT NOTE: Remove Bag Filter for wet vacuuming, leave Foam Motor Filter in place**
- Replace Motor Unit
- Make sure threaded cap over drain on lower side of Canister is tightly closed



OPERATION:

For Dry Vacuuming:

- Plug power cord into suitable electrical source.
- Turn Power Switch located on the top of the Motor Unit to the “On” position.
- Never let the Vacuum motor run when hose is blocked by debris, when placed against a surface or by check valve closure when vacuuming water. Extended periods of blockage can overheat the motor and cause permanent damage.

For Wet Vacuuming:

- Plug power cord into suitable electrical source.
- Keep Vacuum Cleaner in a dry location. **CAUTION: Do Not allow Motor Unit to become wet!** If it does, discontinue use and remove from power source.
- When the motor sound suddenly rises in pitch, this indicates that the canister is full and the Float Valve in the Motor Unit has closed. Shut off power switch immediately, remove power cord from electrical source then drain canister.
- To drain: Unlatch and remove Power Unit from Canister then locate over a suitable drain and remove the threaded cap over the drain on the lower side of the Canister. When all water has drained, replace the threaded cap and tighten securely.

For use as a Blower:

- Plug power cord into suitable electrical source.
- Remove Vacuum Hose from inlet port on side of Canister by twisting Counter-Clockwise and removing it.
- Attach the Vacuum Hose to the outlet of the Motor Unit by slipping end with the larger slotted fitting into Motor Unit inlet. Push in then twist Clockwise to lock in place.

TROUBLE SHOOTING

Vacuum fails to pick up debris:

- Debris have accumulated inside hose blocking it
 - Unplug Unit and clean debris from hose
- Drain Cap on lower side of Canister has loosened
 - Tighten Drain Cap
- Bag Filter is full
 - Unplug Unit and replace Bag Filter
- Debris have accumulated on Foam Motor Filter blocking it
 - Unplug Unit and clean debris from Foam Motor Filter by washing in clean water, dry and replace it

OPTIONAL ITEMS

- #20061 Replacement Bags (5 pack)
- #11455 Respirator

If you have any questions about the use of this product, please contact
Eastwood Technical Assistance Service Department: 800.544.5118 >> email: techelp@eastwood.com
PDF version of this manual is available online >> eastwood.com/20098manual

The Eastwood Company 263 Shoemaker Road, Pottstown, PA 19464, USA
US and Canada: 800.345.1178 Outside US: 610.718.8335
Fax: 610.323.6268 eastwood.com