

Eastwood[®]

DO THE JOB RIGHT.[®]

Item #20232

MIG WELDER CART

INSTRUCTIONS



The **EASTWOOD MIG WELDER CART** is constructed of heavy-gauge, powder-coated steel to provide years of rugged and reliable service. With a generous 17-7/8" x 11" top shelf, it is designed to hold most Eastwood MIG & TIG welders or Plasma cutters along with a required gas bottle. Includes gas cylinder retaining chains for safety, large 7-1/2" rubber-tired wheels for stability and ball-bearing swivel casters for easy mobility.

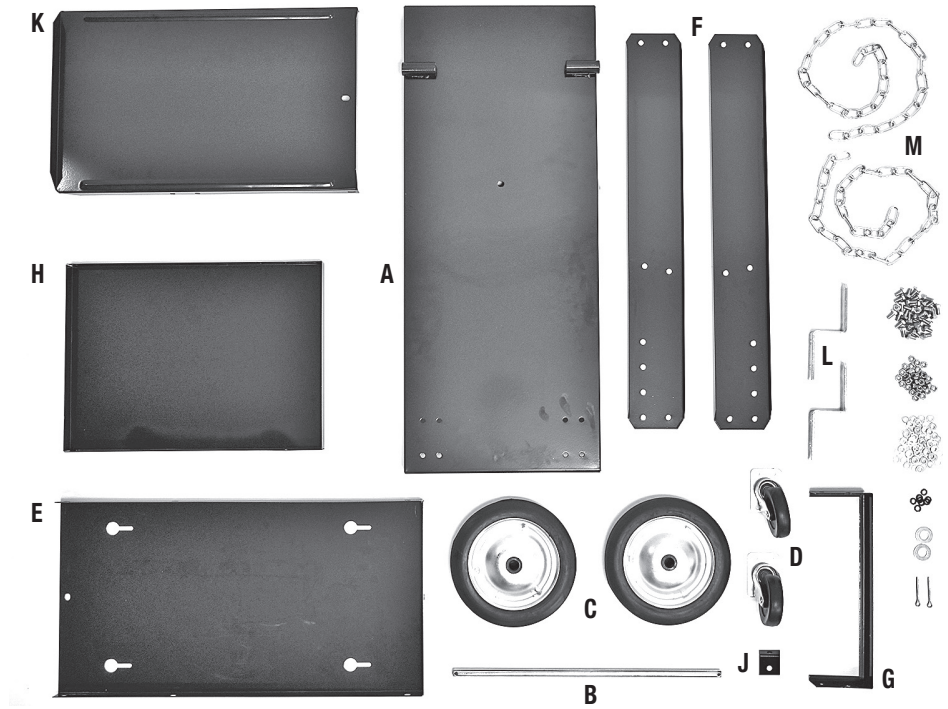
CONTENTS

COMPONENTS

- (1) Lower Shelf [A]
- (1) Axle [B]
- (2) 7-1/2" Wheels [C]
- (2) Swivel Casters [D]
- (1) Rear Vertical Panel [E]
- (2) Shelf Side Support Beams [F]
- (1) Front Shelf Rail [G]
- (1) Center Shelf [H]
- (1) Top Shelf to Rear Panel, Angle Bracket [J]
- (1) Top Shelf [K]
- (2) Cable/Hose Storage Brackets [L]
- (2) Cylinder Retaining Chains [M]

HARDWARE

- (2) Wheel Retaining Washers
- (2) Cotter Pins
- (32) Sets of M6 Nuts, Bolts & Washers



SAFETY INFORMATION

The following explanations are displayed in this manual, on the labeling, and on all other information provided with this product:

DANGER

DANGER indicates a hazardous situation which, if not avoided, will result in death or serious injury.

WARNING

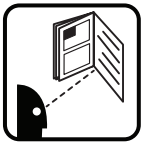
WARNING indicates a hazardous situation which, if not avoided, could result in death or serious injury.

CAUTION

CAUTION indicates a hazardous situation which, if not avoided, could result in minor or moderate injury.

NOTICE

NOTICE is used to address practices not related to personal injury.



READ INSTRUCTIONS

- Thoroughly read and understand this manual before using.
- Save for future reference.



WARNING INJURY HAZARD!

- Pull and guide the Welding Cart by the edge of the Upper Tray only. **DO NOT** pull on welder cables, hoses or wires to move Cart.
- Use caution not to trip on welder cables, hoses or wires when in use for welding.
- This Cart is intended for use with one 7" diameter cylinder. Use caution when handling compressed gas cylinders and always keep in the upright position.
- **ALWAYS** properly secure welding gas cylinders in place with the supplied chain.
- This Welding Cart is designed for use in storing welders, gas cylinders and tools only.
- **DO NOT** concentrate a heavy load to any corner or edge of the Welding Cart. This can cause the balance to shift suddenly, tipping the Cart which can quickly cause severe injury!
- **DO NOT** exceed the rated 200 lbs. [90kg.] weight capacity.
- **DO NOT** use as a seat.
- **DO NOT** stand or step on the Welding Cart.
- Use on a flat and level surface only. **DO NOT** use on sloped surfaces.



WARNING FALL HAZARD!

- Awkward, out of balance body positions may be attempted while trying to reach specific areas of objects placed on the Welding Cart during use. Failure to ensure proper footing can quickly result in a fall which could inflict serious personal injury or property damage.

ASSEMBLY

REAR WHEELS TO LOWER SHELF [C] TO [A]

- Place Lower Shelf [A] with the open side facing downward and the welded axle tubes on top (FIG 1).
- Slide Axle [B] through the welded axle tubes.
- Place 2 large washers over Axle [B] (FIG 1).
- Place Wheels [C] onto Axle [B] (FIG 2).
- Insert cotter pins into holes in either end of Axle [B] and bend legs backward over wheel hubs (FIG 3).

FRONT SWIVEL CASTERS TO LOWER SHELF [D] TO [A]

- Position the Swivel Casters [D] on the underside of the Lower Shelf [A] and align each Caster with one of two sets of 4 mounting holes (FIG 4).
- From the underside of each Swivel Caster [D], insert a bolt and apply a washer and nut over the threads protruding upward through the Lower Shelf [A].
- Repeat for the remaining Caster and tighten securely.



INSTALLING REAR VERTICAL PANEL [E]

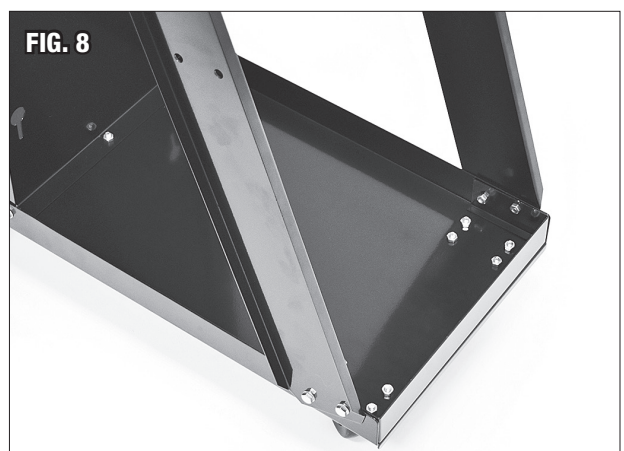
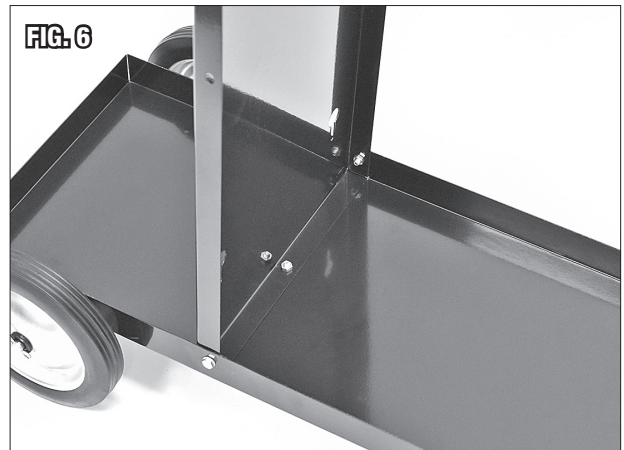
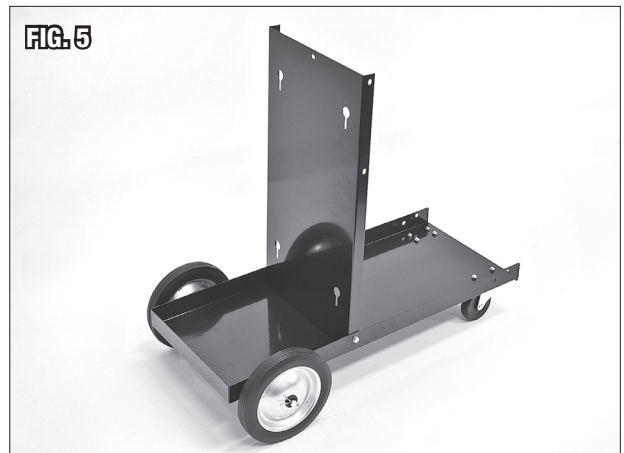
- Place the Rear Vertical Panel [E] over the Lower Shelf [A] with the angled flange against it and facing forward, then align the one bottom flange and two side flange holes (FIG 5).
- Insert a bolt in both sides (from the outside in) and another downward through the Rear Vertical Panel [E] and the Lower Shelf [A] (FIG 6). Apply washers and nuts over the threads protruding through.
- Tighten all 3 bolt, washer and nut sets securely.

SHELF SIDE SUPPORT BEAMS [F] AND FRONT SHELF RAIL [G] TO LOWER SHELF [A]

▲ NOTICE

The bottom ends of the Shelf Side Support Beams [F] have only 2 holes while the top ends have 5 holes.

- Place the Shelf Side Support Beams [F] with the 2 holes at the bottom aligned with the holes in the Lower Shelf [A] (FIG 7).
- At the same time, place the arms of the Front Shelf Rail [G] with 2 holes each aligned with the holes in the Lower Shelf AND the Shelf Side Support Beams [F] (FIG 8).
- Insert 4 bolts (2 in each side, from the outside in). Apply washers and nuts over the threads protruding through.
- Tighten nuts only “finger-tight” to allow for alignment in the following steps.

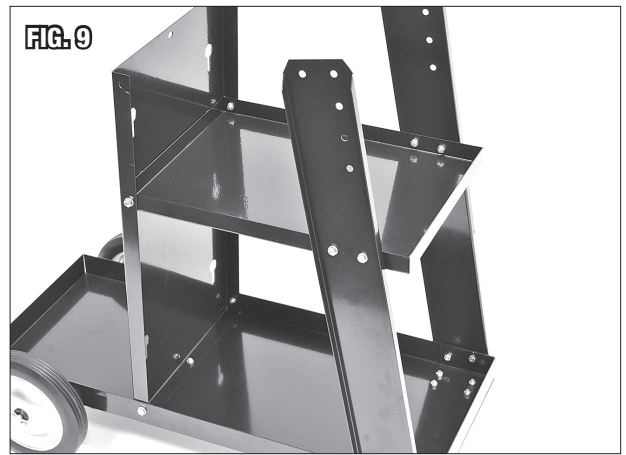


INSTALLING CENTER SHELF [H]

▲ NOTICE

All 4 edges of the Center Shelf [H] have bent flanges. Install with the flanges facing upward.

- Align the Center Shelf [H] side flange holes with the holes in the Shelf Side Support Beams [F].
- Insert 2 bolts each on both sides (from the outside in). Apply washers and nuts over the threads protruding through (FIG 9).
- Align the Center Shelf [H] side flange holes with the holes in the Rear Vertical Panel's side flanges [E].
- Insert a bolt into both Rear Vertical Panel side flanges (from the outside in). Apply washers and nuts over the threads protruding through (FIG 9).
- Tighten nuts only "finger-tight" to allow for alignment in following steps.

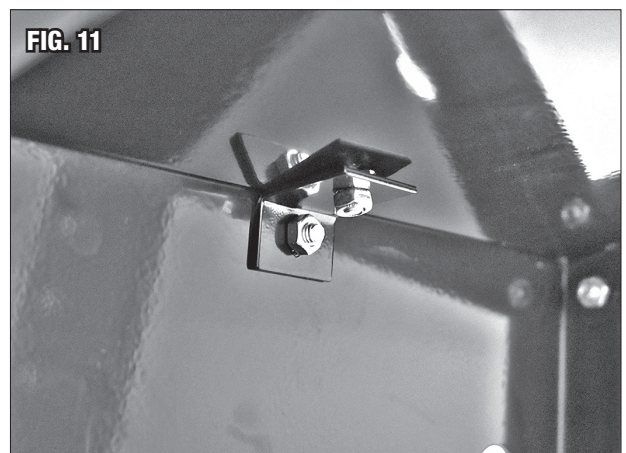


INSTALLING TOP SHELF [K]

▲ NOTICE

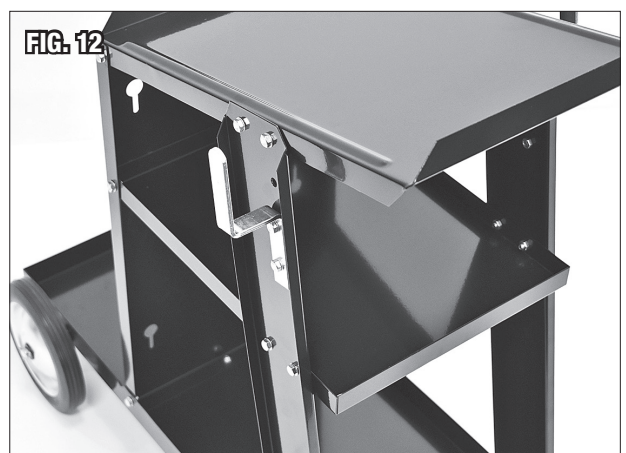
The two End Edges of the Top Shelf [K] have flanges bent upward while the two Side Edges are bent downward.

- Align the middle Top Shelf [K] holes with the holes in the Shelf Side Support Rails [H].
- Insert 2 bolts in each side (from the outside in). Apply washers and nuts over the threads protruding through. Do Not tighten at this time to allow for additional alignment (FIG 10).
- Align the rear corner Top Shelf holes with 2 holes in the side flanges of the Rear Vertical Panel [E] (FIG 10).
- Insert 2 bolts inward from both sides. Apply washers and nuts over the threads protruding through (FIG 10).
- Insert 1 bolt through the hole in the center of the top edge of the Rear Vertical Panel [E] and through the Top Shelf to Rear Panel Bracket [J] and attach with a washer and nut from inside (FIGS 10 & 11). Leave fasteners loose until completion of next assembly step.
- Next, place a bolt down through the rear, center hole in the Top Shelf [K] and through the Top Shelf to Rear Panel Bracket [J] and attach with a washer and nut from underneath (FIG 11).
- Tighten all previously installed bolt, washer and nut sets securely.



ATTACHING CABLE/HOSE STORAGE BRACKETS [L] TO [F]

- Locate the 2 Cable/Hose Storage Brackets [L] over the holes in both Shelf Side Support Beams [H] (FIG 12).
- Insert 2 bolts in both sides (from the outside in). Apply washers and nuts over the threads protruding through.
- Tighten all 4 bolts, washer and nuts securely.



INSTALLING CYLINDER RETAINING CHAINS [M] TO [E]

- Determine a proper chain length to securely hold the gas cylinder in place, turn appropriate chain links to a vertical position and slide Cylinder Retaining Chains [M] into keyhole slots in the Rear Vertical Panel [E] (FIG 13).
- Allow adjoining chain links to rest in a horizontal position against the forward, inside facing surface of the Rear Vertical Panel [E]. Secure the cylinder to the cart as tightly as possible at top and bottom.

The Eastwood MIG Welding Cart is now ready for use.



If you have any questions about the use of this product, please contact

The Eastwood Technical Assistance Service Department: 800.343.9353 >> email: tech@eastwood.com

PDF version of this manual is available at eastwood.com

The Eastwood Company 263 Shoemaker Road, Pottstown, PA 19464, USA 800.343.9353 eastwood.com

© Copyright 2022 Eastwood Automotive Group LLC 9/22 Instruction item #20232Q Rev 1