



DO THE JOB **RIGHT.**

INTRODUCTORY OFFER **\$99⁹⁷**

NO MESS!

- Dustless sanding and laser straight panels
- Saves time and money



Traditional Method

See the Difference Pg 2



Power All Your Air Tools!
Eastwood Elite QST 30/60 Scroll Air Compressor
Pg 3



New Welders & TIG Cooler Are Here!
Pro features at great prices

Pg 3



FIND IT FAST »

| | |
|--------------------|---------|
| Abrasive Blasting | 16 |
| Air Compressors | 32 |
| Body & Fender | 28 - 29 |
| Metal Fab | 12 - 15 |
| New Products | 2 - 5 |
| Ordering Info | 3 |
| Painting | 33 - 35 |
| Powder Coating | 30 - 31 |
| Power Tools | 24 - 25 |
| Rust Solutions | 17 |
| Shop Equipment | 20 - 22 |
| Specialty Coatings | 26 - 27 |
| Tools | 23 |
| Welding | 6 - 11 |
| Yost Vises | 18 - 19 |

WHY SHOP EASTWOOD

YOUR SATISFACTION IS GUARANTEED!

If you're not happy with your purchase, contact us at 1-800-343-9353 to help resolve the issue.



And don't forget about our **FREE Expert Tech Advice**, available by calling 1-800-343-9353, Monday - Friday, 9:00 - 6:00 EST.

Customer Solutions Hours

Mon-Fri, 9:00am - 7:00pm EST.

WARNING! Proposition 65 Compliance Statement:

It is the responsibility of The Eastwood Company to warn its customers that some products sold in this catalog contain chemicals known to the State of California to cause cancer, birth defects, or other reproductive harm. Visit www.P65Warnings.ca.gov.



ARMO
AUTOMOTIVE RESTORATION
MARKET ORGANIZATION

For copies of warranties mentioned in this catalog, write to: Warranty Info., 263 Shoemaker Road, Pottstown, PA 19464. Eastwood is not responsible for typographical or pricing errors. Prices and availability are subject to change. Special Pricing and Offers throughout this catalog cannot be combined with other promotional offers. Printed in the USA. © Copyright 2023 Eastwood Automotive Group LLC

NOTICE: Sale prices valid til 6/30/2023. Due to current events, pricing throughout this catalog may change. Please visit Eastwood.com for the latest product info and pricing.

NEW



Eastwood Elite Contour DSB Dustless Sanding Block System

Everything you need to get started! Just add sandpaper and a shop vacuum. **Save Time** – Less time cleaning and unclogging paper. **Save Money** – Paper lasts longer because clogging is greatly reduced. **Work year-round** – Sand inside with almost no mess any time.

Item #65500

\$99⁹⁷ SAVE \$20

NEW



SPECIAL INTRODUCTORY OFFER

65485 Contour DSB Sandpaper \$39.99
Available in a variety of grits. Sanding rolls are 2.75" wide and a generous 40.50' (13.5 yards) in length.

65497 Contour DSB 5" Block \$29.99
Designed to work with the Eastwood Elite Contour DSB System. Great for tight areas. Use with DSB Sandpaper

65498 Contour DSB 16" Block \$69.99
Designed to work with the Eastwood Elite Contour DSB System. Make large panels perfectly straight. Use with DSB Sandpaper

LEARN MORE ABOUT THE CONTOUR DSB: PAGE 28



54271 P500 Primer Paint Gun \$349.99
Elite P500 Primer Gun comes equipped with stainless steel nozzle sets for spraying all primers – from epoxy to high-build.

SEE THIS GUN & MORE PAINTING: PAGE 34



13520ZP Contour Body Filler \$84.99
Superior coverage & feather edging. Built-in rust inhibitors & self-etching properties. Easy to spread and easy to sand!

SEE THIS & MORE BODY & FENDER: PAGE 28



50244ZP Epoxy Primer \$104.99
DTM (Direct-To-Metal). Easy to sand 2-3 days after applying. 2-Component Primer/Sealer dries fast.

SEE THIS PRIMER & MORE PAINTING: PAGE 33

If you're in the area, visit one of our retail locations!

263 Shoemaker Road, Pottstown, PA 19464
eastwood.com/pottstown | 610-323-9099

691 US Route #1 South, Edison, NJ 08817
eastwood.com/edison | 732-653-1166

12100 S Cicero Avenue, Alsip, IL 60803
eastwood.com/chicago | 708-377-4323

8159-B Governor Ritchie Hwy, Pasadena, MD 21122
eastwood.com/pasadena | 443-906-1992

5673 Ridge Road, Parma, OH 44129
eastwood.com/parma | 440-345-7217

1170 Trademark Dr Suite 106, Reno, NV 89521
eastwood.com/reno | 775-677-4915 ext 109

NEW



Eastwood Elite 200 LCD

You won't find a TIG with all of these pro features at a better price. It's easy to set up, making it easy to get the best welds possible whether you're a pro or new to TIG welding.

- Weld up to 1/4" Steel, stainless, aluminum
- Operates on 120 or 240V
- Pulse to minimize warpage
- AC Frequency Control for precision aluminum welding
- 2T/4T Modes

Includes a Flex Head Torch, Gas Lens Kit and Rocker Style Foot Pedal.

Item #61500

\$1,249⁹⁹*



NEW



Eastwood Elite AC/DC MP200i

One machine that does it all – even TIG weld Aluminum. When you want a TIG welder with pro features that can also MIG and Stick weld, this is the machine for you.

- MIG and Stick weld Up to 3/8"
- TIG weld up to 1/4"
- Operates on 120 or 240V
- Weld steel, stainless, aluminum
- 2 Independent Gas Systems for MIG and TIG

With true high frequency start for TIG welding, this awesome machine comes equipped with a Flex Head Torch, Gas Lens Kit and Rocker Style foot pedal for precision TIG welding. It's even plumbed for MIG and TIG so you don't have to swap gas lines when you switch functions.

Item #65375

\$1,999⁹⁷* **SAVE \$500**



NEW



TIG Cooler

- Run 200° cooler
- Operates on 120 v
- Fits most Eastwood TIG welders
- Buy with a Torch and Save Money!

See Page 7

Item #55252

\$299⁹⁹

55256 Gas Bottle Bracket for TIG Cooler \$16.99

55255 Wall Bracket for TIG Cooler \$14.99

55263 Additive for TIG Cooler \$23.99

NEW



Eastwood Elite QST 30/60 Scroll Air Compressor with Quiet Technology

Our Elite Scroll Compressor is ideal for DIY auto workers who want to run powerful pneumatic tools without upsetting the neighbors. With its dependable, long-lasting construction and affordable price compared to other big brands, our R&D guys have crafted the ideal compressed air source.

Item #63600

\$2,149⁹⁷ **SAVE \$150**



HOW TO ORDER

ORDER ONLINE: at eastwood.com
Order safely & securely 24/7/365

ORDER BY PHONE: 800-343-9353
Monday-Friday 9:00 am - 7:00 pm EST

CUSTOMER SERVICE

EMAIL: help@eastwood.com
CALL: 800-343-9353

PRODUCT SUPPORT/ADVICE

EMAIL: tech@eastwood.com
CALL: 800-343-9353

HOURS OF OPERATION:

Monday-Friday 9:00 am - 7:00 pm EST

SHIPPING: Standard: 4 to 8 business days for Continental USA only. Expedited shipping available. Call 1.800.343.9353 for custom shipping quote. Internet orders placed before 12 noon EST will ship the same day.

The following are registered trademarks of the Easthill Group, Inc.: Eastwood®, Do The Job Right®, Fairmount®, Rockwood®, Almost Chrome®, Alumina Blast®, Carb Renew®, Chassis Black®, Contour®, Detail Gray®, Diamond Clear®, Elastiwrap®, Fender Finisher®, Fender Former®, Golden Cad®, HotCoat®, PRE®, Rust Encapsulator®, Tank Tone®, Undergone®, Contour SCT®, Down to Metal®, Perfect Panel Prep Tool®, Tri-Flow Radiators®, X-MAT®, Radiator Black®, Underhood Black®, Spray Gray®, Fast Etch®, QST-30/60®
The following are registered and/or trademarked by their respective companies: Chevrolet, Ford, Chrysler, Dodge, GM, Mustang, AMC, John Deere, Pontiac, Oldsmobile, Camaro, Simple Green

of Products Online at Eastwood.com

*Special shipping charges may apply

NEW Products

3

NEW

Eastwood Hydraulic Shop Presses

- High quality steel construction
- Pro quality hydraulic system
- Meets ASME 2014 standards
- 10 Ton is ideal for benchtop use or for smaller shops
- The 12 Ton and 20 Ton presses are ideal for medium and larger projects

| | | | |
|---------------------------|-------|--------------------------------------|----------|
| Starting At | 54440 | 10 Ton Hydraulic Benchtop Shop Press | \$379.99 |
| \$379⁹⁹ | 54441 | 12 Ton Hydraulic Shop Press | \$399.99 |
| | 54442 | 20 Ton Hydraulic Shop Press | \$599.99 |



NEW



Eastwood Solid Axle and Frame Dolly

Features an all-steel support structure and steel swivel casters to support up to a total loaded weight of 1500 lbs. When used as a pair, these dollies can support a full-size car or truck frame during restoration and then easily be rolled aside.

Item #54289
\$99⁹⁹

NEW



Eastwood 1/2 Ton Transmission Jack

An all-steel, heavy-duty jack that allows for easy installation and removal of the vehicle's transmission.

- 1/2 Ton Capacity
- Adjustable Lifting Pad
- Tested to 2014 ASME Standards

Item #33916
\$199⁹⁷ SAVE \$25

NEW



Eastwood EZ Turn Engine Stand

The Eastwood EZ Turn Engine Stand features an efficient folding design to minimize storage space when not in use.

- 63:1 ratio worm gear drive
- 360° Rotation
- Supports up to 1000 lbs.
- Locking Swivel Casters

Item #31551
\$299⁹⁹

NEW



Eastwood 2 Ton Engine Crane

- 2 Ton Capacity will handle most needs for passenger cars and trucks
- Convenient Fold Up design to save space in your shop when not in use
- Steel ball bearing swivel casters
- 8-Ton hydraulic cylinder
- Tested to 2014 ASME Standards

Item #33913
\$349⁹⁹



NEW



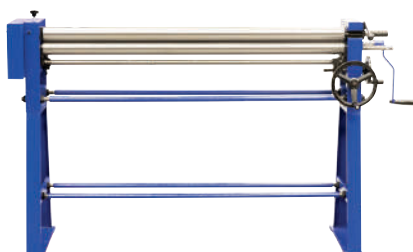
Eastwood PRE GREEN

50 State Compliant PRE GREEN Paint Prep Cleaner and Degreaser has no harsh chemicals

- Removes silicone, dirt, wax, polish and grease to promote primer, paint and powder adhesion

| | | |
|-------|--------------------|---------|
| 60022 | Pre Green - Quart | \$26.99 |
| 60023 | Pre Green - Gallon | \$49.99 |
| 60024 | Pre Green - Wipes | \$68.99 |

NEW



Eastwood Heavy Duty 50 Inch Slip Roller with Stand

Easily shape and form driveshaft and transmission tunnels, curved patches, rounded truck bed panels and even artwork with this 50 Inch Slip Roll that includes the stand. The gear reduction makes it easy to form rounded shapes, curves, bends and cones in full size 48 inch panels of sheet metal. It even forms rod.

Item #59752
\$1,999⁹⁹

NEW



DuraSpray – 2K Aerosols with Unlimited Pot Life

DuraSpray is a highly durable and chemical resistant 2-component coating like you'd spray from a HVL paint gun, but in an aerosol can. Plus it has unlimited potlife so you don't need to use it all at once. Available in numerous primers, topcoats and clears, see the full selection at Eastwood.com. No air compressor, paint gun or equipment needed. Plus no messy cleanup.

| | | |
|--------|---------------------------------------|---------|
| 55051Z | DuraSpray Clear High Gloss | \$27.99 |
| 55049Z | DuraSpray Epoxy Primer Grey | \$27.99 |
| 55057Z | DuraSpray Topcoat Gentian Alpine Blue | \$27.99 |

NEW



Eastwood Car Parts Cart - Rolling Storage Rack

This heavy duty cart rolls easily around your shop on the large casters. The heavy duty shelves hold up to 200 pounds each and you can easily store a large hood, doors, fender or trunk lid on the backside. You can even add shelves to the back if you want more storage. This cart is perfect for holding parts during a restoration, whether it's a car, truck or motorcycle.

Item #60002
\$449⁹⁹

NEW



Eastwood Tube Beading Die Set

- Fabricate intercooler systems
- Prevent leaks and slippage
- 55251 fits manual rollers with a 22mm shaft
- 32558 fits power rollers with a 3/4" shaft

| | | |
|-------|-------------------|----------|
| 55251 | Tube Beading Dies | \$39.99 |
| 32558 | Tube Beading Dies | \$187.99 |

NEW



Eastwood Bead Roller Stretching Dies

- Turn your bead roller into an English wheel
- Pre-Stretch metal to prevent oil canning
- 54815 fits manual rollers with a 22mm shaft
- 54816 fits power rollers with a 3/4" shaft.

| | | |
|-------|-----------------|---------|
| 54815 | Stretching Dies | \$62.99 |
| 54816 | Stretching Dies | \$49.99 |

NEW



Eastwood Inline Wire Stripper

- Stripping Blades Automatically Adjust to Wire Size
- Strip 10 - 24 AWG (0.2 - 6mm) Stranded or Solid Wire
- Cuts up to 14 AWG (2mm) Solid Wire

Item #33933
\$12⁹⁸

Eastwood

Concours

PREMIUM CAR CARE

Eastwood's got you covered from bumper to bumper with the best products to maintain your car.

Eastwood.com/Concours

COMING SOON!



of Products Online at Eastwood.com

*Special shipping charges may apply

NEW Products

5

MIG WELDERS: The Best Value in Welders
All Eastwood MIG Welders Use Industry-Standard Consumables



Eastwood MIG 140

- Welds up to 3/16"
- Great for DIY projects from sheet metal to steel

| | |
|------------------------------|----------------------------------|
| Input | 120V |
| Amperage Draw | 20 Amps |
| Output Range | 30-140 Amps |
| Duty Cycle | 30% @ 90 Amps |
| Weld Material | Steel, Stainless Steel, Aluminum |
| Weld Capability (mild steel) | 24-Gauge to 3/16" |
| Weld Capability (aluminum) | 14-Gauge to 1/8" |
| Wire Size | 0.023" - 0.035" |
| Weight | 24 lbs. |
| Torch | Tweco-Style |
| Torch Length | 8.5' |
| Power Source | IGBT Inverter |
| Ground Length | 8.5' |

Item #33970

\$369⁹⁷* **SAVE \$30**

Eastwood MIG 180

- Welds up to 5/16"
- Great for any project from steel to aluminum

| | |
|------------------------------|----------------------------------|
| Input | 120V or 240V |
| Amperage Draw | 30 Amps |
| Output Range | 30-180 Amps |
| Duty Cycle | 30% @ 180 Amps |
| Weld Material | Steel, Stainless Steel, Aluminum |
| Weld Capability (mild steel) | 24-Gauge to 5/16" |
| Weld Capability (aluminum) | 14-Gauge to 1/4" |
| Wire Size | 0.023" - 0.035" |
| Weight | 25 lbs. |
| Torch | Tweco-Style |
| Torch Length | 8.5' |
| Power Source | IGBT Inverter |
| Ground Length | 8.5' |

Starting At

\$549⁹⁹*

33980 MIG 180 Welder \$549.99*

33990 MIG 180 with Spool Gun **SAVE!** \$649.99*

Eastwood MIG 250

- Welds up to 1/2"
- Great for the heaviest fabrication jobs in the shop

| | |
|------------------------------|----------------------------------|
| Input | 120V or 240V |
| Amperage Draw | 46 Amps |
| Output Range | 50-250 Amps |
| Duty Cycle | 60% @ 250 Amps |
| Weld Material | Steel, Stainless Steel, Aluminum |
| Weld Capability (mild steel) | 20-Gauge to 1/2" |
| Weld Capability (aluminum) | 14-Gauge to 1/4" |
| Wire Size | 0.023" - 0.045" |
| Weight | 46 lbs. |
| Torch | Trafimet Ergo Plus 24 |
| Torch Length | 8' |
| Power Source | Mosfet Inverter |
| Ground Length | 8.5' |

Item #33930

\$999⁹⁹*



Eastwood MIG 90

- The perfect welder for beginners
- Weld up to 1/8"
- 120V Input
- True MIG machine for the best welds
- Can flux-core weld without gas

Item #58015

\$219⁹⁹



MIG Consumables Kit

For Eastwood MIG 135, 140, 175, and 180, or any other MIG welder with a Tweco-style torch.

- 2 Gas Nozzles
- 10) 0.023"/0.6mm Contact Tips
- (10) 0.030"/0.8mm Contact Tips
- Plastic Storage Case

Item #20000

\$45⁹⁹

MIG Accessories

| | | |
|-------|---|---------|
| 12210 | MIG Nozzle for MIG 135, MIG 140, MIG 175, MIG 180 | \$14.99 |
| 20255 | MIG Wire, 0.030" (10" spool) 10 lbs. | \$49.99 |
| 12226 | MIG Wire, 0.023" (4" spool) 2 lbs. | \$19.99 |
| 12227 | MIG Wire, 0.030" (4" spool) 2 lbs. | \$19.99 |
| 12084 | MIG Wire, 4043 Aluminum 0.030" (4" spool) 1 lb. | \$15.99 |

Visit Eastwood.com for more Consumable Kits & Accessories

TIG WELDERS: Cleaner Welds with Better Precision

All Eastwood Welders Include a 3-Year Industry-Best Warranty



Eastwood TIG 200 DC

- Welds up to 1/4"
- Great for precision fabrication of steel
- Stick weld compatible

| | |
|---------------|------------------------|
| Input | 110 or 240V |
| Amperage Draw | 10-200 Amps |
| Output Range | DC |
| Duty Cycle | 60% @ 190 Amps |
| Weld Material | Steel, Stainless Steel |
| Max Weld | 1/4" |
| Weight | 18 lbs. |
| Torch | WP-17 |
| Torch Length | 14' |
| Collet Size | 1/16" - 3/32" |
| Power Source | Mosfet Inverter |
| Pre Gas Flow | 0.5 Sec. |
| Post Gas Flow | 0.5 Sec. |
| Foot Pedal | Yes |
| Ground Length | 10' |

Item #20566
\$608⁹⁹*

Eastwood TIG 200 AC/DC

- Welds up to 3/8"
- Great for fabrication projects from steel to aluminum
- Stick weld compatible

| | |
|---------------|------------------------------------|
| Input | 120 or 240V |
| Amperage Draw | 10-200 Amps |
| Output Range | AC/DC |
| Duty Cycle | 60% @ 190 Amps |
| Weld Material | Steel, Stainless Steel Aluminum |
| Max Weld | 1/4" |
| Weight | 39 lbs. |
| Torch | WP-17 F Flex w/Gas Lens |
| Torch Length | 12' |
| Collet Size | 1/16" - 3/32" |
| Power Source | Mosfet/IGBT Inverter |
| Pre Gas Flow | 0.1 - 1.0 Sec. (adj.) |
| Post Gas Flow | 2 - 8 Sec. (adj.) |
| Foot Pedal | Yes |
| Ground Length | 9.5' |

Item #33920
\$799⁹⁷* **SAVE \$100**

Eastwood Elite 200 LCD

- Welds up to 1/4"
- For steel and aluminum
- Includes Pulse and AC Frequency Control

| | |
|---------------|------------------------------------|
| Input | 120 or 240V |
| Amperage Draw | 10-200 Amps |
| Output Range | AC/DC |
| Duty Cycle | 20% @ 200 Amps |
| Weld Material | Steel, Stainless Steel Aluminum |
| Max Weld | 1/4" |
| Weight | 34 lbs. |
| Torch | WP-17 F Flex w/Gas Lens |
| Torch Length | 12' |
| Collet Size | 1/16" - 3/32" |
| Power Source | IGBT |
| Pre Gas Flow | 0.1-1.0 Sec. (adj.) |
| Post Gas Flow | 0-15 Sec. (adj.) |
| Foot Pedal | Yes - Rocker Style |
| Ground Length | 9.5' |

Item #61500
\$1,249⁹⁹*



Mini #9 TIG Torch with Metal Connector

- Use for tight-spot welding
- 2-1/2" overall length

Item #20167
\$101⁹⁹

Eastwood Pyrex Gas Lens Master Kit

- 21 Piece Kit Greatly Improves Welds
- Fits WP17, WP18, WP26 Torches
- Allows for more stickout in tough areas

Item #61047
\$69⁹⁹



NEW



TIG Cooler with Torch

- Fits Eastwood TIG Welders above
- Keeps temps up to 200° F below a standard air cooled torch
- Operates on standard 120 VAC household current
- Includes wither WP18F torch or WP20F torch

98020 Eastwood TIG Cooler with WP18F Torch **\$349.99**

98021 Eastwood TIG Cooler with WP20F Torch **\$349.99**



TIG Gas Lens Kit

A gas lens improves shielding gas coverage by distributing shielding gas around the tungsten more efficiently with less turbulence than a conventional design. A gas lens also allows the tungsten to protrude further out of the torch for better visibility of the area you are welding.

20284 TIG Gas Lens Kit **\$53.99**

20652 TIG Gas Lens Kit #10/12 **\$54.99**

VERSA-CUT PLASMA CUTTERS Cut Thin Sheet Metal up to 7/8" Plate



Eastwood Versa-Cut 20

- Cuts up to 1/8"
 - Great for patch panels and sheet metal
- Best used for precise cuts of sheet metal where larger torches do not fit. Ability to cut with little to no slag build-up, so there is less time for metal prep before welding.

| | |
|---------------------|----------------|
| Input | 110V |
| Output | 15 Amps |
| Duty Cycle | 40% @ 15 Amps |
| Max Cut | 1/8" |
| Weight | < 15lbs |
| Air Requirements | 3 cfm @ 60 psi |
| Torch | Trafimet S25K |
| Torch Tip | 0.65mm |
| Torch Cable Length | 20' |
| Ground Cable Length | 10' |

Item #20062
\$429⁹⁹



Eastwood Versa-Cut 40

- Cuts up to 3/8"
 - Great for medium-duty fabrication
- Ability to cut metal with 110 or 220v power source. Cut thick material or thin with precision.

| | |
|---------------------|------------------|
| Input | 120 or 240V |
| Output | 40 Amps |
| Duty Cycle | 60% @ 40 Amps |
| Max Cut | 3/8" |
| Weight | < 24lbs |
| Air Requirements | 5-7 cfm @ 60 psi |
| Torch | Trafimet CB50 |
| Torch Tip | 0.1mm |
| Torch Cable Length | 20' |
| Ground Cable Length | 10' |

Item #59983
\$629⁹⁹*



Eastwood Versa-Cut 60

- Cuts up to 7/8"
 - Great for medium-duty fabrication
- Cut material as thick as an industrial-size unit (7/8") at a fraction of the price.

| | |
|---------------------|------------------|
| Input | 120 or 240V |
| Output | 60 Amps |
| Duty Cycle | 60% @ 60 Amps |
| Max Cut | 7/8" |
| Weight | 31lbs |
| Air Requirements | 5-7 cfm @ 60 psi |
| Torch | Trafimet |
| Torch Tip | 0.1mm |
| Torch Cable Length | 20' |
| Ground Cable Length | 10' |

Item #58221
\$799⁹⁹*



Plasma Cutting Guide

- Cut accurate circles and laser straight lines like a pro. Designed for our Versa Cut Plasma Cutters, our Cutting Guide features a large 1.375" dia. wheels for easy maneuverability (fits other torches with 0.96" or smaller head dia).
- Adjusts to cut from 3.75" to 17"-dia. holes or circles in material up to 3/8" thick
 - Versatile mount for use with a center punch or center hole

Item #13689
\$62⁹⁹



Plasma Cutting Table

- Cut at a comfortable height on a table that supports 250 lbs.

Item #14142
\$249⁹⁹



20026 Replacement Slat Kit **\$53.99**



Plasma Cutter Consumables

| | | |
|-------|-------------------------------------|----------------|
| 55020 | Versa-Cut 20 Consumables Kit, 11pc | \$44.99 |
| 21542 | Versa-Cut 40 Consumables Kit, 12pc. | \$65.99 |
| 21543 | Versa-Cut 60 Consumables Kit, 14pc | \$68.99 |

Plasma Shades

- 5-shade, scratch-resistant lenses offer eye protection

Item #13948
\$15⁹⁹



MULTI-PROCESS WELDERS

Save Space - with a 3-in-1 Machine



Eastwood Elite MP140i

- Welds up to 3/16"
 - Works with our 20645 Spool Gun
- The best 120V machine we've tested. Includes MIG, TIG, Stick torches.

| | |
|--------------------|----------------------------------|
| Input | 120V |
| Output Range | 30-140 Amps |
| Weld Process | MIG, TIG, ARC |
| Duty Cycle | 30% @ 90 Amps |
| Weld Material | Steel, Stainless Steel, Aluminum |
| Max Weld | 3/16" |
| Weight | 34 lbs. |
| MIG Torch | Tweco-Style Ergo 15 |
| Power Source | IGBT Inverter |
| Ground Length | 10' |
| MIG Cable Length | 10' |
| Regulator Included | Yes |

Item #20559
\$565⁹⁹*

Eastwood Elite MP200i

- Welds up to 3/8"
 - Works with our 20645 Spool Gun
- Use all day, every day. Includes MIG, TIG, Stick torches.

| | |
|--------------------|----------------------------------|
| Input | 120 or 240V |
| Output Range | 20-200 Amps |
| Weld Process | MIG, TIG, ARC |
| Duty Cycle | 20% @ 200 Amps |
| Weld Material | Steel, Stainless Steel, Aluminum |
| Max Weld | 3/8" |
| Weight | 34 lbs. |
| MIG Torch | Tweco-Style Ergo 24 |
| Power Source | IGBT Inverter |
| Ground Length | 10' |
| MIG Cable Length | 10' |
| Regulator Included | Yes |

Item #20569
\$849⁹⁹*

Eastwood Elite MP250i

- Welds up to 1/2"
- True DC TIG with high frequency start and Foot Pedal.

| | |
|--------------------|----------------------------------|
| Input | 120 or 240V |
| Output Range | 30-250 Amps |
| Weld Process | MIG, TIG, ARC |
| Duty Cycle | 60% @ 250 Amps |
| Weld Material | Steel, Stainless Steel, Aluminum |
| Max Weld | 1/2" |
| Weight | 160 lbs. |
| MIG Torch | Ergo Plus 24 |
| Power Source | IGBT Inverter |
| Ground Length | 14.8' |
| MIG Cable Length | 14.8' |
| Regulator Included | Yes |

Item #54500
\$1,599⁹⁹*



MP140i/MP200i Spool Gun

- Allows you to weld aluminum up to 1/4"
- Simple plug-and-go connection

Item #20645
\$349⁹⁹

MP Welder Consumables

| | | |
|-------|-------------------------------|---------|
| 21203 | MP140i Consumables Kit | \$39.99 |
| 21829 | MP200i/MP250i Consumables Kit | \$39.99 |



NEW

Eastwood Elite AC/DC MP200i

- Welds up to 3/8"
- A true professional AC/DC TIG Welder for steel, stainless and aluminum that can also MIG and Stick weld.

Item #65375
\$1,999⁹⁹* SAVE \$500

| | |
|--------------------|----------------------------------|
| Input | 120 or 240V |
| Output Range | 10-200 Amps |
| Weld Process | MIG, TIG, ARC |
| Duty Cycle | 50% @ 200 Amps (TIG) |
| Weld Material | Steel, Stainless Steel, Aluminum |
| Max Weld | 3/8" |
| Weight | 96 lbs. |
| MIG Torch | Tweco-Style |
| Power Source | IGBT Inverter |
| Ground Length | 14.8' |
| MIG Cable Length | 8' |
| Regulator Included | Yes |

WELDING HELMETS: True Color Technology

Clearly see your work while you MIG, TIG, or Stick Weld!

The Eastwood Large & Extra Large View Auto Darkening Welding Helmets are some of the best helmets on the market for the price. Both feature True Color Technology.

- True Color Technology
- Impact Resistant Nylon
- Multi-Adjustable Head Band
- Variable #4 to #13 Shade
- Grind Feature
- Replaceable Li-Mn Battery



Eastwood Lg. View Auto Darkening Welding Helmet L6700

10 sq in viewing area

Item #21483

\$79⁹⁹

10 sq in
Viewing
Area



Eastwood XL View Auto Darkening Welding Helmet XL9300

14 sq in viewing area

Item #21484

\$149⁹⁹

14 sq in
Viewing
Area



Eastwood Panoramic Welding Helmet

Sensitivity delay and shade adjustment is infinitely adjustable with the top-mounted controls. The main viewing area can be dimmed from shade 3 to 12, while the side-view filters are auto-dimmed to shade 11. Also includes a grind mode allowing you to quickly reshape tungsten. Grind spot welds and more, without having to remove the helmet. Replaceable batteries.

Item #21195

\$179⁹⁹

26 sq in
Total
Viewing Area



Rockwood Auto Darkening Welding Helmet

- 3.62" x 1.65" Viewing area
- Durable and Lightweight
- Multi Adjustable Head Band
- Variable #5 to #13 shade
- Grind Feature

Item #32082

\$49⁹⁹

6 sq in
Viewing
Area



Weld Helmet Magnification Lens Master Set

Improve your vision and welding with magnification lenses for your helmet. Fits welding helmets with a 4-1/4" x 2" slot. Includes 7 lenses – magnification +1 through +2.5. Lenses also sold individually.

Item #23218

\$19⁹⁸



Welding Helmet Bag

Keep your welding helmet clean. Protect helmet from dirt, scratches, and damage.

Item #12957

\$12⁹⁹



High quality Eastwood MIG and Flux-Core Wire Spools

- Great for metal fabrication of all kinds, including auto restoration
- Conforms to AWS 5.18 and AWS 5.20 standards
- 1-year warranty

| | | |
|-------|-------------------------|---------|
| 23022 | .023 2lb MIG Wire | \$16.99 |
| 23023 | .030 2lb MIG Wire | \$14.99 |
| 23024 | .035 2lb MIG Wire | \$9.98 |
| 23025 | .023 11lb MIG Wire | \$49.99 |
| 23026 | .030 11lb MIG Wire | \$36.99 |
| 23027 | .035 11lb MIG Wire | \$38.99 |
| 23028 | .030 2lb Flux Core Wire | \$19.99 |
| 23029 | .035 2lb Flux Core Wire | \$12.98 |



Eastwood Elite TG2000 Cordless Tungsten Grinder

- Easily and precisely sharpen 1/16" & 3/32" tungsten to a precise 22.5° or 10° angle
- Increase arc control and accuracy, eliminates arc wander on outside corners
- Precision-ground tips assure better penetration and stronger welds
- Diamond Wheel provides over 200 sharpenings

Item #58878

\$129⁹⁷ **SAVE \$20**

| | | |
|-------|---|---------------------------------|
| 33307 | Eastwood TG1800 Tungsten Grinder (with cord) | \$99.97 SAVE \$32 |
| 33308 | TG1800 Tungsten Grinder Replacement Wheels, 6pk | \$29.99 |
| 33309 | TG1800 Tungsten Grinder Replacement Wheels, 2pk | \$19.99 |



Welding Cart

Designed to hold our MIG 135, MIG 175, Cut 40 or TIG 200DC and an 80-cu.-ft. bottle.

Item #20232
\$89⁹⁹



20181 Welding Cart 4-Drawer Cabinet for 20232 **\$199.99**



Low Profile Welding Cart

Holds a welder or plasma cutter on top shelf and consumables on the bottom. Even fits under a workbench.

Item #23093
\$99⁹⁹



Toolbox Welding Cart

Designed to hold a welder or plasma cutter and the 4 drawers hold all your accessories.

Item #23219
\$299^{99*}



2-Unit Welding Cart

Designed to hold our welders plus our Versa Cut Plasma Cutter on the same cart. Accommodates accessories and 80-cu.-ft. bottle too!

Item #11616
\$149^{99*}



Professional Welding Cart

Holds two units (welders or plasma cutters), plus two 125-cu.-ft. bottles, accessories, and TIG rods. Supports up to 400 lbs. and easily moves around.

Item #20354
\$249^{99*}



Eastwood Elite 27" Bead Roller

Item #21327

\$449.99*

27" Throat Capacity Allows You To Start from the Center of a 54" Panel

- Fabricated Design: Industry-leading strength and rigidity
- 27" Throat Capacity: Gets to the center of a 54" panel
- Industry-Standard Shaft: 22mm shafts to accept all professional dies
- 18 gauge steel, 16 gauge aluminum capacity
- Tool-less design for quick and precise adjustment
- Vise or stand mountable for ease of use
- Includes set of offset dies

21328 Guide Fence for 27" Bead Roller

\$50.99

Add power with a Drive System Motor: #21111 listed below.



Bead Roller and Table sold separately

Bead Roller Kit with 4 Sets of Dies

- Perfect for floor pans, doors, dashes, firewalls, more!
- 19" throat handles up to a 38" wide piece
- Includes offset/tipping dies and 1/4", 3/8", and 1/2" bead forming die sets
- Mounts securely in your bench vise
- Forms steel up to 18-gauge; aluminum up to 16-gauge

Item #32044

\$219.99*

20552 Bead Roller Fence **\$53.99**

32045 4-Spoke Hand Crank **\$19.99**



Eastwood Motorized Bead Roller

- 1/6 HP 120v motor with reversible, variable foot control of speed and direction leaves both hands free!
- Includes 1/2" dies to start immediately
- Form precise beads and joggle bends

Starting At

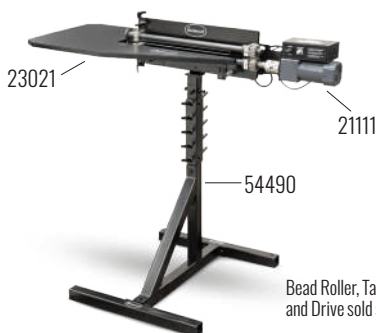
\$899.99*

20622 Eastwood Motorized Bead Roller, 24" **\$899.99***

22965 Eastwood Motorized Bead Roller, 36" **\$1,749.99***

21284 Eastwood Motorized Bead Roller Forming Dies **\$419.99**

Visit Eastwood.com to shop more Dies



Bead Roller, Table, Stand, and Drive sold separately

23021 Table for 27" Bead Roller **\$159.99***

Supports long panels and increases precision. Fits standard plate steel style bead rollers including #32044. Height adjustable.

54490 Eastwood Bead Roller Stand **\$124.99***

Fits all Eastwood hand-crank bead rollers and most other brands. Swivel head design for forming panels in tight spaces. Includes die rack.

21111 Eastwood Elite Bead Roller Drive System **\$429.99**

Features a powerful 1.65-amp motor, infinitely variable speed control, and foot switch. Fits all Eastwood Bead Rollers and all other competitors with a plate steel frame, 50mm bearing block bolt pattern, and a 25mm shaft at the crank handle.



Eastwood Elite 8" Heavy-Duty Bead Roller

- Produce strengthening ribs in panels, shape edges, and form intricate designs by yourself!
- Create channels and flanges with offset flange dies
- Gear-driven design delivers maximum forming power, but requires minimal handle force for great accuracy
- 8" throat depth lets you reach the center of a 16" panel
- Works with up to 18-ga. steel and 16-ga. aluminum

Item #21487

\$149.99*



Press sold separately

Eastwood Press Brake Attachment

- Designed to fit 12-ton or greater hydraulic shop presses
- Accurate bends up to 90° in up to 3/8" material
- Form steel and aluminum up to 12" long
- Create complex shapes and brackets

Item #21560

\$257⁹⁹



Eastwood Versa Bend Sheet Metal Brake

- Produce standard and variable length bends
- Great for floor reinforcement, channels and ribs, pick-up beds, and more
- Accurate 1/2 Inch offset bends up to 90°
- Use with 20-gauge sheet steel and 18-gauge aluminum in widths up to 20" – 18-gauge steel in widths less than 12"
- Bench or vise mount

Item #14042

\$249⁹⁹*



Versa Bend Forming Bar

With the addition of the Versa Bend Forming Bar to our Eastwood Versa Bend Sheet Metal Brake, you can make precise bends within 3/8" of each other, up to 90° in 20 gauge sheet steel and 18 gauge aluminum, in widths up to 20". Create floor reinforcement channels and ribs, door sills, sections of corrugated pickup bed floors, and more!

Item #20411

\$79⁹⁹



Eastwood Box Pan Brake

- Great for creating complex shapes for floor reinforcement channel and ribs, corrugated pick-up bed floor sections, truck bedside panels, inner fender structures, and more!
- Bends sheet metal up to 12", 24", or 48"
- Use on up to 20-gauge steel, 24-gauge stainless or 16-gauge aluminum
- Makes bends up to 135°
- Removable fingers to create pans or boxes

Starting At

\$329⁹⁹*

20664 Eastwood 12" Box Pan Brake \$329.99*

20665 Eastwood 24" Box Pan Brake \$499.99*

20666 Eastwood 48" Box Pan Brake \$1,199.99*



20664



20665

Eastwood 3 in 1 Sheet Metal Shear Brake and Slip Roll

- Create complex shapes such as channels, ribs, patch panels, cones, cylinders, and more
- Bends, Rolls, and Shears up to 30" or 12" wide
- Removable fingers to create boxes & pans
- Adjustable stops for consistent, repeatable actions
- Works on 20-gauge mild steel, 24-gauge stainless and 18-gauge aluminum
- Compact space saving design
- Designed for one-person operation

Starting At

\$449⁹⁹*

21302 Eastwood 12" Box Pan Brake \$449.99*

21304 Eastwood 30" Box Pan Brake \$999.99*



21302



21304



Eastwood 48" Electro-Brake

- Bend 16 gauge steel and 20 ga. aluminum
- 6 tons of consistent clamping force across entire surface
- Includes complete set of Clamping Bars
- Bends metal of 140°

Item #32601

\$3,299⁹⁹*



EXCLUSIVE

Eastwood Benchtop English Wheel

- 20" throat and 18" internal height
- Large 8" wheel & 5" radius anvil wheel
- Micro-adjustable anvil adjustment wheel
- Workbench or vise mount
- Knockdown feature means less shipping costs

Item #14156

\$608⁹⁹*

20017 4 Piece Anvil Set for English Wheel \$205.99

20637 English Wheel Forming Band \$21.99
Form metal quicker with more control



Eastwood Elite Mini English Wheel

- An affordable way to get into wheeling
- Form 15"-wide body patch panels for fenders, doors, quarter panels, and more.
- Rigid bench mount frame features 7-1/2" throat.
- Includes 1/2, 1, 2, and 3" radius lower anvil wheels

Item #54830

\$329⁹⁹



Eastwood Throatless Shear

- Extended handle multiplies leverage for effortless cutting
- Easily cuts 14-gauge mild steel & 18-gauge stainless
- Workbench or stand mount
- Locking feature for safety

Item #11797

\$269⁹⁹

20454 Replacement Blade Set \$99.99



Eastwood DIY Shrinker/Stretcher Complete Set

Shrink or stretch up to 18 gauge mild steel. Complete DIY Set includes shrinker jaw set, stretcher jaw set, two housings with handles, instructions.

Item #51088

\$239⁹⁹

51437 Replacement Shrinker and Stretcher Jaw Set, fits 51088 and 50143 \$159.99

23320 Lancaster Shrinker \$196.99

23321 Lancaster Shrinker \$209.99

20357 Shrinker Stretcher Base \$49.99

Save time and money by mounting both your Shrinker and Stretcher to this vise-mounted Base Plate.



Eastwood Elite Deep Jaw Shrinker Stretcher

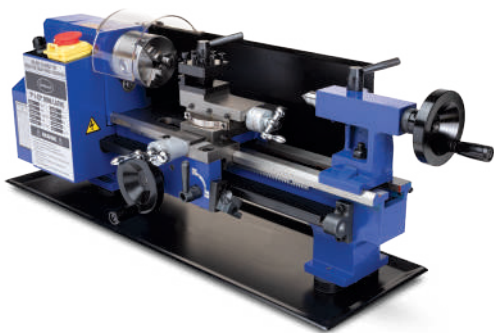
- Heavy-duty design
- Extra-deep 7" throat depth & wider jaws
- Shrink or stretch up to 16-gauge mild steel
- 17" long handle for increased leverage

Item #21489

\$499⁹⁹*

21491 Stand for Deep Jaw Shrinker Stretcher \$199.99*

Stand provides increased leverage and allows user to hold piece with both hands



Eastwood Mini Lathe

- 7" x 12" lathe is perfect for turning small parts
- Easily and accurately turn steel, aluminum, Delrin, brass, oil impregnated bronze
- Auto feed and selectable gear train components
- Inside/outside 3-jaw chuck set included
- 3/4HP motor
- HSS cutting tools included to get you started
- Fab a radio or head light knob, bushings and sleeves or bevel tube ends

Item #32497

\$1,018⁹⁹*



Eastwood Mini Mill

- 4" x 16" size is perfect size for a home shop
- 5/8" end mill capacity
- 2-axis table with 45° tilting column
- Large R8 taper for use with common tooling, collets, and drills
- 0-2500 RPM motor with 2-speed gearbox
- Includes 3/8" collet and end mill
- Fab your own shifter gate, gas pedal, tube clamps, turbo flange or even surface a valve cover

Item #32498

\$849⁹⁹*



High Capacity Tubing Bender

- Bends up to 180° in aluminum, steel, stainless, and copper tubing, from 3/4" to 2" with available dies
- Build roll bars, shop fixtures, go-kart frames and more
- Solid brass pivot bushings and a 5/8" steel frame

Item #21115

\$414⁹⁹*

21116 Stand for High Capacity Tubing Bender \$134.99*

21129 Handle for High Capacity Tubing Bender \$33.99*



Eastwood Pro Former Metal Tubing Bender

- Perfect for building custom tube cross members, transmission mounts, & more!
- Accurate bends without flattening or deforming edges
- Bend steel and chrome-molybdenum tubing in diameters from 0.75" - 1.75"
- Includes dies for 0.75", 1.0", 1.5", 1.625" and 1.75" dia. tubing

Item #12485

\$774⁹⁹*



Hydraulic Tubing Bender

- Quickly and accurately bend up to 180° in aluminum, steel, stainless steel, and copper tubing, in sizes ranging from 3/4" to 2"
- Accurate, smooth, kink-free bends
- Perfect for roll cage, suspension, and heavy tube work
- 1 HP motor
- Dies sold separately

Item #22199

\$2,699⁹⁹*

EXCLUSIVE



Eastwood "Master Blaster" Dual Blaster

- Exclusive mixing valve offers "on-the-fly" control of each media...intermixing for gentle to mild blasting, or full-force aggressive media-blasting for heavy rust or coating removal
- Mixing valve allows operator to go from blasting rust on cast iron to paint removal on wood, fiberglass or delicate metals with a flip of the lever
- Heavy-gauge, fully welded and powder-coated tanks and heavy-wall blast hose ensures safety and high-pressure velocity at the nozzles
- 10'-long blast hose

Item #11737

\$599⁹⁹*



Eastwood 100-lb. Soda Blaster

Pressure Blaster include an 8'-long, 1/2"-ID hose, four nozzles, hardware, safety components, and instructions to switch the blaster from bicarbonate soda to abrasive use. Operates on as little as 10 cfm at 90 psi.

Item #50095

\$309⁹⁹*

51556 Replacement Ceramic Nozzles, 2mm, 3-pack \$24.99

Visit Eastwood.com for more Replacement Nozzles



Eastwood Soda/Abrasive Blaster

Pro-grade Soda Blaster requires just 10 CFM at 90 psi and provides a 50-lb. capacity for soda media or up to 110-lb. of abrasive media. Includes a lengthy 10'-long, 1/2"-I.D. blast hose with heavy-duty deadman valve; all-steel welded, top-loading hopper; pressure gauge. Includes 3/32" ceramic nozzle. Rolls easily to job site on two wheels. Readily converts between soda and aggressive abrasive blasting with included parts.

Item #50096

\$877⁹⁹*

WARNING: Pressure blasters and blast cabinets emit abrasive particles under high pressure. Adequate respiratory, eye, and body protection must be utilized at all times during product operation. Inhalation of silica-based blast media particles have been known to cause cancer and other deadly diseases and must be avoided. Always wear NIOSH-approved respiratory protection when operating this equipment.



B20 Benchtop Blast Cabinet

Affordable blasting

- Space-saving design
- Hinged top
- High-quality blast gun

Exterior: 24"w x 20"d x 19-1/4"h

Interior: 3 cu. ft.

Requires: 7 CFM @ 90 psi

Item #30721

\$189⁹⁹*

B40 Modular Blast Cabinet

Modular cabinet

- Tabletop or stand-up design (with separate Leg Kit)
- Internal LED work light
- Baffled vacuum connection

Exterior: 30-1/2"w x 20-1/2"d x 28"h (with 9" legs)

Interior: 28"w x 18"d x 12"h

Requires: 7 CFM @ 90 psi

Item #20464

\$399⁹⁹*

20499 36" Leg Kit \$59.99*

B60 Blast Cabinet

Blast large parts

- Holds up to 125 lbs. of parts
- Internal LED work light
- Baffled vacuum connection
- Low volume, non-dumping hopper
- High flow blast gun

Exterior: 36-1/4"w x 24-1/4"d x 58-3/4"h

Interior: 36"w x 24"d x 23"h

Requires: 7 CFM @ 90 psi

Item #98019

\$616⁹⁹*

B100 Blast Cabinet

Blast even larger parts

- Entire front opens for access
- Holds up to 220 lbs. of parts
- Protected fluorescent lighting
- Foot pedal air valve
- Includes dust collection unit

Exterior: 48-1/4"w x 37"d x 66-3/8"h

Interior: 48"w x 24"d x 24"h

Requires: 12 CFM @ 90 psi

Item #21301

\$1,749⁹⁹*



Foot Pedal & Gun Upgrade

Eliminates hand fatigue and adds more precise control to the blast media flow.

Item #21133

\$99⁹⁹*



Eastwood Dust Collector

Includes a powerful, high efficiency 12 amp motor with a large 1.75 gallon dust capacity and offers easy filter clearing and dust draining capability. The multi-mounting design allows locating directly to the rear of the Blast Cabinet or remote wall mounting.

30998 Dust Collector \$269.99

*Special shipping charges may apply



EXCLUSIVE

Eastwood Rust Encapsulator Platinum

Cutting-edge rust treatment

- High-performance moisture-cured coating
- Single component, aluminum pigmented coating
- Encapsulates and stops rust from spreading
- Brush, roll-on, or spray application
- Creeps into crevices to stop rust from spreading
- Withstands up to 350°F

16259Z Eastwood Rust Encapsulator Platinum, Pint **\$39.99**

16258ZP Eastwood Rust Encapsulator Platinum, Quart **\$56.99**

16257ZP Eastwood Rust Encapsulator Platinum, Gallon **\$179.99**



Best-in-class performance

- 3X stronger than Original Rust Encapsulator
- Withstood 1500 hours in a Salt Spray Chamber
- Superior adhesion to rust or bare metal for long lasting protection
- Proprietary additives for superior bond and chip resistance
- Compatible with all quality top coats like Chassis Black
- UV resistant. Does not need to be topcoated

| 1-Coat Coverage (approximate) | |
|-------------------------------|-------------|
| Pint | 48 sq. ft. |
| Quart | 96 sq. ft. |
| Gallon | 384 sq. ft. |



Wire Brush Loose Rust



Clean with PRE



Brush-on



OR Spray-On



Eastwood Rust Encapsulator PLUS

- 2X the protection of the original Rust Encapsulator
- Matte black finish
- Direct-to-metal application, or directly over rust
- Brush-on, roll-on, or spray with conventional spray equipment
- Does not need to be topcoated except for areas to be exposed to direct sunlight
- Can be top coated with any quality paint
- Withstands temps up to 350°F

54292Z Rust Encapsulator PLUS, Pint **\$27.99**

54290ZP Rust Encapsulator PLUS, Quart **\$42.99**

54291ZP Rust Encapsulator PLUS, Gallon **\$167.99**

| Coverage (approximate) | |
|------------------------|-------------|
| Pint | 48 sq. ft. |
| Quart | 96 sq. ft. |
| Gallon | 384 sq. ft. |



Rubberized Rust Encapsulator Undercoating

- Does not need topcoated
- Won't fade in sunlight
- Aerosol is also available in colors. Textured and rubberized versions available.

13651Z Rubberized Rust Encapsulator Undercoating, Aerosol **\$19.97**

11864Z Rubberized Rust Encapsulator Undercoating, Quart **\$44.97**

Eastwood Internal Frame Coating

- Encapsulate rust and prevent corrosion
- Perfect for frames, rockers, window and door frames

15275Z Internal Frame Coating, Black Aerosol **\$29.99**

12515Z Internal Frame Coating, Green Aerosol **\$29.99**

Eastwood Rust Converter

- Easy spray on or brush on application
- Single component – no mixing required
- Compatible with most topcoats

51483Z Rust Converter, Aerosol **\$24.99**

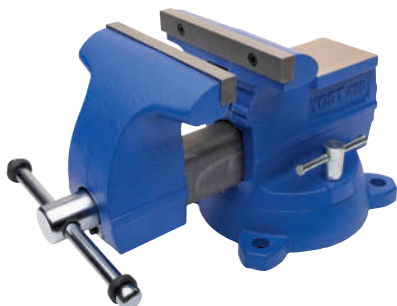
51676 Rust Converter, Quart **\$39.99**

51677 Rust Converter, Gallon **\$106.99**



NOTE: Rust Converter MUST be applied OVER RUST.

Machinists, mechanics, carpenters and artists who need an iron grip have trusted Yost since 1908



Yost Apprentice Vises

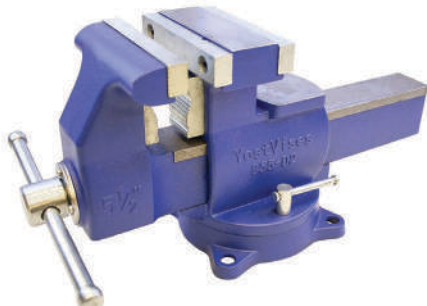
The Perfect Bench Vise for the Homeowner and Hobbyist

- Made From 30,000 PSI Cast Iron
- Integrated Pipe Jaws
- Starting at 17 lbs
- Available in 4.5", 5.5", 6", 6.5", 8"

Starting At

\$77⁹⁹

| | | |
|-------|----------------------|----------|
| 56411 | Yost Model 445, 4.5" | \$77.99 |
| 56412 | Yost Model 455, 5.5" | \$99.99 |
| 56413 | Yost Model 465, 6.5" | \$129.99 |
| 56414 | Yost Model 460, 6" | \$204.99 |
| 56415 | Yost Model 480, 8" | \$254.99 |



Yost Multi-Purpose Reversible Combination Vises

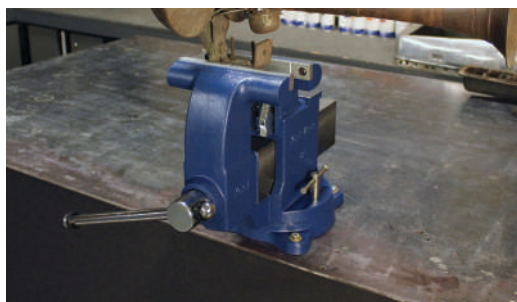
Reversible Jaws are Great for Clamping Large Items

- Made From 65,000 PSI Ductile Iron
- Replaceable Pipe Jaws
- Starting at 38 lbs
- Available in 5.5", 6.5", 8"

Starting At

\$168⁹⁹

| | | |
|-------|-------------------------|----------|
| 56488 | Yost Model 855-D2, 5.5" | \$168.99 |
| 56558 | Yost Model 865-D2, 6.5" | \$239.99 |
| 56559 | Yost Model 880-D2, 8" | \$328.99 |



Yost Tradesman Vises

The Strongest Vises Yost Has Ever Offered

- Made from Oversized 65,000 PSI Ductile Iron Castings
- Replaceable Pipe Jaws
- Starting at 67 lbs
- Available in 4.5", 5", 5.5", 6", 6.5", 8"

Starting At

\$336⁹⁹

| | | |
|-------|----------------------|------------|
| 56396 | Yost Model 45C, 4.5" | \$336.99 |
| 56390 | Yost Model 33C, 5" | \$599.99 |
| 56397 | Yost Model 55C, 5.5" | \$349.99 |
| 56391 | Yost Model 34C, 6" | \$1,214.99 |
| 56398 | Yost Model 65C, 6.5" | \$387.99 |
| 56399 | Yost Model 80C, 8" | \$584.99 |



Yost Austempered Ductile Iron Bench Vises

Incredible strength and durability in a compact package

- Made From 130,000 PSI Austempered Ductile Iron
- Replaceable Pipe Jaws
- Starting at 22 lbs
- Available in 4", 5", 6", 8"

Starting At

\$141⁹⁹

| | | |
|-------|----------------------|----------|
| 56407 | Yost Model ADI-4, 4" | \$141.99 |
| 56408 | Yost Model ADI-5, 5" | \$189.99 |
| 56409 | Yost Model ADI-6, 6" | \$294.99 |
| 56410 | Yost Model ADI-8, 8" | \$330.99 |

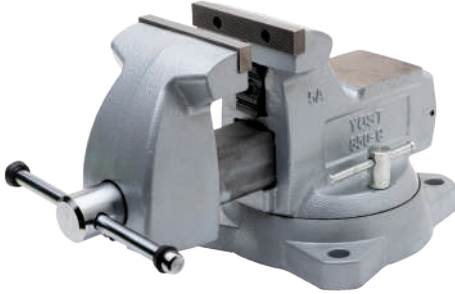


Yost Heavy Duty Machinist Vises

Oversized castings provide exceptional durability

- Made from Oversized 65,000 PSI Ductile Iron Castings
- Starting at 35 lbs
- Available in 3", 4", 5", 6"

| | | | |
|---------------------------|-------|--------------------|----------|
| Starting At | 56374 | Yost Model 203, 3" | \$255.99 |
| \$255⁹⁹ | 56376 | Yost Model 204, 4" | \$424.99 |
| | 56378 | Yost Model 205, 5" | \$566.99 |
| | 56379 | Yost Model 206, 6" | \$690.99 |



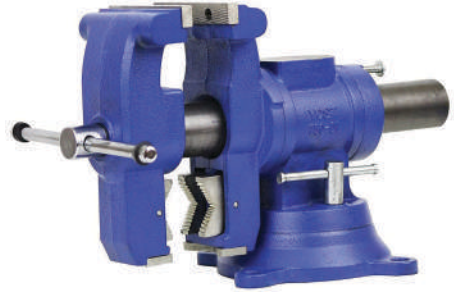
Yost 5" Mechanics Vise

Compact for mechanics work benches yet durable enough for heavy-duty work.

- 30,000 PSI Cast Grey Iron with Tubular Steel Frame
- Enclosed Lubricated Main Screw Sheltered From Environment
- Resilient and Professional Powder Coat Finish
- 360° Interlocking Swivel Base with (2) Lockdowns
- Large Anvil Work Surface
- Replaceable Jaws
- Pipe Jaws Set Back to Allow for Machinist's Vise Use

Item #56401

\$169⁹⁹



Yost 750-D, 5 1/8" Heavy Duty Multi-Jaw Rotating Combo Pipe / Bench Vise

Perfectly secure metal or wood or use the pipe jaws for tubing projects for cutting or threading.

- Made of Heavy Duty Ductile Iron
- Three sets of replaceable hardened steel jaws
- Hold both round and flat stock
- Vise head rotates 360° with locking at every 30° (12 positions)
- Vise body rotates 360° and lockdowns at any position
- Large built-in anvil
- No-pinch main screw handle

Item #56432

\$237⁹⁹



Yost 750-E, 5" Medium Duty Rotating Vise

Dual jaw system with 360 degree rotating head and dual lockdowns for perfect positioning.

- Ductile iron construction (60,000 PSI) Front Jaw and Fixed Jaw
- 5 Inch Jaw Width
- 3 Inch Throat Depth
- 2.5 Inch Pipe Jaw Capacity
- 5 Inch Jaw Opening
- Head of Vise rotates a full 360 Degrees
- 360 Degree Swivel Base with Dual Lockdowns

Item #56481

\$119⁹⁹



Yost 6" Heavy Duty Chain Pipe Vise

Securely hold pipes and tubing for cutting or threading.

- Heavy duty cast iron body
- Pipe capacity: 1/4 inch to 6 inch pipe
- Crank handle is anchored to base
- Rugged cast-iron base has handy pipe rest and bender
- Ideal when working with larger pipe and handling other bulkier material
- Stronger leg chain: Heavier duty chain offers rugged durability for extended life and transport convenience
- Toothless jaws are neoprene-coated to prevent scoring of pipe

Item #56949

\$139⁹⁹



Eastwood 3.5 Gallon Benchtop Parts Washer

Fits where larger washers won't, yet big enough for most parts. Electric pump with an adjustable spigot.

- Compact 18-1/2" x 14" x 10"
- 3.5-gallon max. capacity, 1-gallon min.
- Pump with flexible spigot

Item #30640

\$79⁹⁹

Visit Eastwood.com to shop oil eaters and degreasers



Eastwood 20-Gallon Parts Washer

For bigger jobs. Electric pump circulates solvent at 2.7 GPM.

- Rugged welded steel construction
- 20-gallon max. capacity 12-gallon min capacity
- Includes removable shelf, parts bin and flowthrough brush

Item #14293

\$199⁹⁹*



Eastwood 40-Gallon Parts Washer

For the biggest cleaning jobs. Electric pump circulates solvent at 5.3 GPM.

- Clean an entire transmission case or many parts at once
- Clean grease from valve covers, oil pans, even drive shafts
- 130 lb. max. weight capacity
- 40-gallon tub, 24-gallon operating capacity
- 44" x 21" x 35" external dimensions

Item #31875

\$339⁹⁹*



Eastwood 7" x 12" Metal Cutting Bandsaw

- Powerful 3/4 HP motor
- Cuts up to 7" x 10.5" thick rectangle, 7" round
- Saws horizontal or vertical
- 4 speeds – 86, 132, 178 or 260 FPM
- Angled cuts from 0 to 45°
- Hydraulic feed system
- Cooling system
- 4 roller wheels to easily move/store it

Item #21980

\$1,599⁹⁹*



Eastwood Benchtop Bandsaw

- Ideal for cutting tubing, flat and round stock, and angle iron
- Perfect miter cuts from 90° to 45°
- Thin, exact cuts with a narrow kerf
- Powerful variable speed 1000-watt motor
- Pistol grip handle & speed control trigger
- Built-in clamp for material up to 3.25" thick
- Stop bar for repeated, same size cuts

Item #20237

\$502⁹⁹*



Eastwood 9L Heated Ultrasonic Cleaner

The Eastwood Ultrasonic Cleaners are specifically designed with heavy-duty, stainless steel tank and parts basket. The 40,000 Hz, superheterodyne transducer-design provides precision, damage-free cleaning power of grimy parts without the need for abrasion.

Item #33969

\$440⁹⁹



Complete Tap & Die Sets

Restore old threads or create new ones. Metric, SAE, and USS. Professional quality gets the job done right.

33862 Eastwood 110PC Tap & Die Set \$159.99

33861 Eastwood 60PC Tap & Die Set \$69.99



Vise and hole saws sold separately

Eastwood Professional Tubing Notcher

Accurate notches, every time

- Tubing from 3/4" to 3"
- Accepts standard hole saws
- Use 1/2" drill to power
- Angle adjustable up to 50°
- Vise or bench mount

Item #20447

\$349⁹⁹



Eastwood Rotisserie

The Eastwood 3000lb Rotisserie is the perfect way for you to be able to access every side of the vehicle for a true professional restoration. Fabricate a few mounts to attach your project to the universal arms and you are ready to lift and spin your project towards completion.

- Rotate body/frame assembly 360°
- Supports up to 3,000 pounds
- Heavy-duty, easy rolling casters
- Slow release for safe lowering
- Easy compact storage
- Powder coated
- Height adjustable for easy access
- Easy assembly
- Heavy-duty long-reach jacks
- Center support extends a full 18'
- Mount most any body – even fiberglass!
- Three-year warranty

Item #32194

\$1,599**

Visit Eastwood.com for more Rotisserie information



Hydraulic Wheel Dollies, Set of 2

Lift the wheels off the ground and move cars around the shop, whether they run or not. Each dolly can lift up to 1300lbs, and work with tires up to 12" wide. Heavy duty ball bearing casters allow cars to be easily maneuvered around paved and concrete surfaces. Hydraulic powered foot pedal makes using these dollies a breeze.

Item #30551

\$329**



30580 Hydraulic Wheel Dollies Rack

\$62.99

Keeps 4 dollies handy, and rolls to where you need them easily on casters, or out of the way for storage.



Eastwood Heavy-Duty Body Cart

Heavy Duty Body Cart features an all steel support structure and oversize 8" swivel casters to support up to a total loaded weight of 2000 lbs. yet is completely portable for rolling body shells and pickup beds. A generous 57" x 70" span will accommodate large vehicle bodies and projects.

Item #31539

\$399**



Eastwood 1000lb Wheel Dolly, Set of 2

These wheel dollies are capable of holding 1000 lbs each and will accept a maximum width tire of 12". Each dolly has four 3" nylon casters for easy mobility and is powder coated so you can be sure it will look good for many years.

Item #30664

\$79**



Eastwood Solid Axle and Frame Dolly

Features an all-steel support structure and steel swivel casters to support up to a total loaded weight of 1500 lbs. When used as a pair, these dollies can support a full-size car or truck frame during restoration and then easily be rolled aside.

Item #54289

\$99**



Eastwood 18-lb. Vibratory Tumbler with FREE media

- 15" diameter, 7.5" deep bowl holds up to 18lbs of media and parts
- Drain tube to quickly drain any liquids
- Includes 7lbs of green light-cut media and 7lbs of Dri Shine polishing media

Item #20153

\$259**

20164 Extra 18-lb. Tumbler Bowl \$55.99



Original rusted parts



Parts after tumbling



Final polished parts



Eastwood Electronic Wheel Balancer

- Allows quick balancing and guidance for applying weights
- Fits 10" to 24" diameter rims – 1.5" to 20" widths
- 34" maximum tire diameter with 200 RPM rotation speed

Item #31639

\$1,499⁹⁹*



Eastwood Swing Arm Tire Changer

- Mount/dismount tires on most steel or alloy wheels
- Fits up to 45" diameter tires – 16" maximum rim width
- 115 to 145 psi [8 to 10 Bar] air requirement

Item #31638

\$1,499⁹⁹*



31886 Tire Bead Seating Kit \$119.99

Use with the Eastwood Tire Changer. Compressed air tank quickly seats tire beads. 145 psi max. pressure.

Visit Eastwood.com for tire lube, applicators, plus kits, buffers, and more



Eastwood Modular Work Bench

- 1600 lb. capacity
- Sturdy, powder coated 10 ga. steel construction
- Leveling feet for uneven floors
- 59-1/2" x 27-1/2" work surface
- 2" retaining fence on three sides

Item #98018

\$320⁹⁹*

32560 Work Bench Casters \$48.99



Eastwood Heavy-Duty Teardown Table

Features a spacious, rugged steel work surface with castor wheels for complete portability.

- 47" x 32" x 41" high
- Drain with removable basin
- Lockable storage drawer
- Holds up to 1000 lbs
- Use for engines, transmissions, and other large components

Item #98017

\$478⁹⁹*



Eastwood Teardown Table

Teardown Table for smaller jobs

- 27" x 16" x 35" high
- Center drain empties into removable basin
- Holds up to 250 lbs
- Perfect for motorcycle parts and small engines

Item #31652

\$149⁹⁹*



Eastwood Rolling Shop Tray

- Tray height adjusts from 18" - 50"
- 100 lb weight capacity
- Perfect for car or truck engine bays, even interiors
- Hold tools, parts, diagnostic tools, and manuals at the right height when working

Item #16075

\$149⁹⁹



Eastwood Wheel Ramps & Chocks

23048 Detachable Car Ramp Set \$159.99

23049 Car Ramp Set \$69.99

23400 2-Piece Rubber Wheel Chock Set \$15.99



23049



23400



Eastwood Bare Steel Shop Table Kit

- 3/16 inch heavy gauge high strength unpainted bare steel
- Laser cut and CNC bent for accuracy
- Bolt together with 4x4 and 2x4 lumber
- Weld together with 2.5in tubing and 2in angle iron
- 8 brackets in kit make 1 table
- You decide height and width of the table by the lumber or steel purchased

Item #20195

\$149⁹⁹





Eastwood Double/Single Flaring Tool

Mounts in your vise to easily form 45° single and double flares, and bubble (DIN) in 5 sizes of OE steel, stainless steel, or soft metal tubing for brake lines, transmission cooler lines, fuel lines. Hardened steel dies are mounted on the turret, so you'll work quickly. Includes forming tool; quick-release "T"-handle screw clamp; 3/16"-, 1/4"-, 5/16"-, 3/8"- and 4.75mm-dia. tube-retaining dies; instructions; molded case.

Item #25304

\$219⁹⁹

31259 3/16" Replacement Dies for 25304

\$32.99



37-Degree Flare Die Kit for 25304 Pro Flare Tool

If you have our 25304 Pro Flaring Tool to produce 45-degree flares, add this die kit to also create the 37-degree flares used in custom, hydraulic and military applications with AN- or JIC-type fittings. Works on steel and stainless 3/16", 1/4", 5/16" and 3/8" tubing. Includes 7 punch sizes (turret-style), 4 die blocks.

Item #30005

\$99⁹⁹



Hydraulic Tubing Flaring Tool Set

- Hydraulic cylinder for effortless use
- Creates 45° single and double flares
- Works on 3/16", 1/4", 5/16", 3/8" & 1/2" tubing
- Creates ISO/DIN bubble flares
- Creates Push-Connect type flares
- Works on or off the vehicle

Item #31562

\$329⁹⁹

This tool is designed with a Hydraulic Cylinder to easily form 45° single, double flares in 3/16", 1/4", 5/16", 3/8" & 1/2" tubing sizes and 4.75mm, 6mm, 8mm & 10mm ISO/DIN bubble flares both on the car and off the car. In addition, dies are included to create Push-Connect type flares in 1/4", 5/16", 3/8" and 1/2" as well as GM style fuel line flares in 5/16", 3/8" & 1/2".



Versatile Tubing Bender

Ideal for brake, A/C, fuel and transmission lines. Bends 1/4", 5/16" and 3/8" tubing. Use with steel, aluminum or copper lines to make smooth, tight 180° bends with little effort and improved control. Lightweight, die-cast aluminum.

Item #12435

\$27⁹⁹



5pc. Long Shaft Carbide Burr Set

Includes Cylindrical Radius 3/8" x 3/4", Cylindrical 3/8" x 1", Tree 3/8" x 3/4", Tree Radius End 3/8" x 3/4", and Ball 3/8"

Item #31115

\$75⁹⁹



8pc. Carbide Burr Set

Includes Cylindrical 1/2" and 3/8", Cylindrical Radius End 3/8" and 1/4", Tree Radius End 3/8" and 1/2", and Ball 1/4" and 3/8"

Item #31116

\$71⁹⁹





CONTOUR SCT®



4 TOOLS IN ONE

The BEST way to strip rust, paint, and body filler

EXCLUSIVE

Eastwood Contour SCT® Surface Conditioning Tool

The **Eastwood Contour SCT** is a heavy-duty, professional-quality tool designed to quickly surface metal or tackle any paint or rust stripping project. In-line design eliminates torque load.

- **Heavy-Duty:** Industrial construction with a powerful 9 amp motor and hardened spur metal gearbox
- **Versatile:** Strips paint, filler, rust, even wood decks
- **Value:** Gives old metal surfaces a like-new finish

Item #21145

\$189⁹⁷ SAVE \$30

Industrial 9 Amp
High Torque Motor

6-Position
Speed Control

Quick Change
Wheel System



Contour SCT Rack

All-in-one storage rack to easily store your SCT and abrasive drums.

- Drums shown sold separately

Item #33328

\$49⁹⁹

Tackle Any Job

Shop Eastwood's full line of abrasive bands and drums

Sanding bands also available at Eastwood.com



Black Abrasive Drum

21970 \$53.99



Scale & Rust Stripping Drum

21975 \$52.99



Steel Wire Drum

21974 \$53.99



Abrasive Flap 60 Grit

21977 \$23.99



Abrasive Flap 120 Grit

21978 \$23.99



Stripping Drum 80 Grit

21173 \$24.99



Stripping Drum 120 Grit

21174 \$24.99



Stripping Drum 240 Grit

21175 \$23.99



Trizact Band 600 Grit**

21178 \$17.99



Trizact Band 800 Grit**

21179 \$17.99



Expanding Drum
**Required with Trizact and sanding bands

21146 \$49.99



Finishing Drum 60 Grit

21971 \$23.99



Finishing Drum 120 Grit

21972 \$21.99



Finishing Drum 240 Grit

21973 \$24.99



Finishing Drum 320 Grit

21176 \$23.99



Buffing Drum

21172 \$62.99



Spiral Sewn Drum

21976 \$26.99



Narrow Finishing Wheel 80 Grit

32491 \$14.99



Narrow Finishing Wheel 120 Grit

32492 \$11.99



Narrow Finishing Wheel 240 Grit

32493 \$11.99



Narrow Finishing Wheel 320 Grit

32494 \$14.99



Narrow Abrasive Wheel 40 Grit

32495 \$16.99



Narrow Scale Stripping Wheel

32496 \$20.99



Narrow Wheel Spacer set required with Narrow Wheels 32490 \$17.99



Eastwood 3" Adjustable Head Cut Off Tool

- 25° up or down adjustment
- Variable speed
- Reversible direction
- 90 PSI operating pressure

Item #31847
\$128⁹⁹



Eastwood 3" Inline Cut-Off Tool

- 4 CFM – 17,000 RPM
- Uses 3" wheels with 3/8" arbor
- Built-in trigger lock-out prevents accidental activation
- High-torque motor reduces stalling

Item #31921
\$107⁹⁹



Eastwood 4" Extended Reach Air Cut-Off Tool

- Works with your 4" Cut-Off Wheel (sold separately)
- Speed adjustment knob
- Forward and reverse cutting action
- Spark control at the flip of a switch
- 14,000 RPM
- 1/4" air inlet, uses 7.1 CFM at 90 psi

Item #51680

\$183⁹⁹

28255 4" Cut-Off Wheel, 5pk \$14.99



Eastwood Combination 8" Bench Grinder and 2" x 28" Belt Sander

- Sands, finishes, grinds, sharpens, cleans, deburrs and files
- One bench-mounted tool for metal & woodworking
- Powerful 3450-rpm, 1/2-HP motor
- Quick-release wheel cover
- Includes 1 aluminum oxide grinding wheel, 1 aluminum oxide sanding belt
- Lamp uses vibration-resistant 40w bulb (not included)

Item #13577
\$159⁹⁹



Eastwood Reciprocating Air Body Saw

- Perfect for body, exhaust, & muffler work
- 5,000 strokes per minute to cut through most metals & materials up to 1/16" thick
- Replaceable blades (6 included)
- 3.5 CFM at 90 psi

Item #13745
\$59⁹⁹



Eastwood Electric Metal Cutting Shears

- Easily slice through up to 18-gauge thick
- Rotating jaws to cut straight or irregular shapes
- Replaceable blades

Item #13475

\$65⁹⁹

Eastwood Belt Disc Sander

Quickly sharpen, bevel, contour, radius and grind with this 2" x 42" belt and 6" disc sander. The 42" belt and 6" disc accepts common DA paper. The included miter gauge allows for compound angles to be ground. The belt can be oriented vertically or horizontally.

Item #22979
\$287⁹⁹



Eastwood Mini Metal Saw

- Lightweight, compact, and powerful
- Cold-cutting – no sparks!
- Transparent blade window

Item #31664

\$99⁹⁹

31665 Replacement Blade \$16.99



Metal Cutting Jigsaw with FREE Blades

- Includes 10 Free Starrett Blades
- Straight or curved cuts in metal
- Quick release blade

Item #32290

\$89⁹⁹



Spray Gray® Aerosol

Cast Iron Look

- Protect parts and maintain fresh-cast factory appearance
- Perfect for water pumps, master cylinders, & more!
- Withstands up to 300°F
- Covers approx. 6 sq. ft.

10032Z Spray Gray®, 12-oz. Aerosol \$16.99

54295Z Spray Gray® 2K AeroSpray, 12-oz. Aerosol \$29.99

Aluma Blast® Aerosol

Aluminum Look

- Protective, durable, natural satin finish for smooth cast aluminum parts
- Ideal for transmission cases, bell housings, alternators, & more!
- Withstands up to 300°F
- Covers approx. 6 sq. ft.

10109Z Aluma Blast®, 12-oz. Aerosol \$16.99

54294Z Aluma Blast® 2K AeroSpray, 12-oz. Aerosol \$29.99

Detail Gray® Aerosol

Stamped Steel Look

- For stamped or machined steel, rough cast steel & pot metal parts
- Great for steering and suspension parts
- Withstands up to 300°F
- Covers approx. 6 sq. ft.

10036Z Detail Gray®, 12-oz. Aerosol \$16.99

54293Z Detail Gray® 2K AeroSpray, 12-oz. Aerosol \$29.99



EXCLUSIVE



Brake Gray Aerosol

Resists brake fluid

- Heavy duty coating with pure stainless steel pigment
- Resistant to DOT 3 brake fluid
- Excellent corrosion resistance, ideal for master cylinders, disc brake calipers, brake drums, spindles, brackets, & hardware
- Withstands up to 400°F
- Exactly matches Eastwood Spray Gray

11756Z Brake Gray, 13-oz. Aerosol \$21.99



Stainless Steel Aerosol

Stainless steel look

- Super durable
- Protects from corrosion
- Ideal for brackets, trim pieces, & much more!
- Withstands up to 300°F
- Covers approx. 6 sq. ft.

16312Z Stainless Steel Detail Paint, 12-oz. Aerosol \$14.99



Diamond Clear®

- Protects against corrosion & UV light
- Withstands up to 300°F
- Compatible with all popular top coats
- Aerosols covers approx. 6 - 8 sq. ft.; quart approx. 40 sq. ft.

16105Z Diamond Clear® Gloss, Aerosol \$16.99

16106Z Diamond Clear® Satin, Aerosol \$16.99

33993ZP Diamond Clear® Gloss for Bare Metal or Painted Surfaces, Quart \$36.99

NEW Match OEM colors with our Rally Wheel Coatings

One can covers about 6 sq ft and will cover about 2 wheels. Topcoat with 2K AeroSpray Clear or Diamond Clear.

2K AeroSpray is a two component coating with a catalyst in a bladder inside the can.

Don't forget POR-15 Caliper Paints at Eastwood.com!



Silver/Argent Rally Wheel Paint

10001Z 1K Standard \$19.99

33908Z 2K AeroSpray \$29.99



Satin Black Rally Wheel Paint

10085Z 1K Standard \$18.99

33910Z 2K AeroSpray \$29.99



Charcoal Rally Wheel Paint

10003Z 1K Standard \$12.99

33909Z 2K AeroSpray \$29.99

Underhood Black matches OEM underhood finishes

Perfect for your radiator supports, inner fender walls, underhood brackets and many other parts, and resists chipping, scratches and light impacts, with exceptional adhesion. Acrylic lacquer base withstands up to 250°F and goes on thin so it won't hide surface details. Semi-Gloss is 10-20% gloss level and matte finish is 5-10% gloss level. Aerosol covers 6 sq. ft.; quart size can covers about 48 sq. ft. Apply over Gray Self-Etching Primer (16014Z) or Black Rust Encapsulator® (16060Z) for improved corrosion protection.

Matches OEM underhood finishes

| | | |
|---------|---|---------|
| 10024Z | Underhood Black Semi-Gloss, Aerosol, 11 oz. | \$19.99 |
| 10045ZP | Underhood Black Semi-Gloss, 1 Quart | \$49.99 |
| 12032Z | Underhood Black Matte, Aerosol, 11 oz. | \$19.99 |
| 54251Z | Underhood Black Textured, Aerosol, 11 oz. | \$14.99 |
| 54283Z | Underhood Silver Textured, Aerosol, 11 oz. | \$14.99 |



CHASSIS BLACK®: The Perfect Protection for Your Auto Chassis

Original Chassis Black®

- Accurate color for most makes and models
- Works great over bare metal or Eastwood Rust Encapsulator®
- Provides tough protection...resists chips, salt, corrosion, and withstands up to 300°F
- Aerosol covers approx. 8 sq. ft., quart approx. 40 sq. ft.
- NOTE: Chassis Black® cannot be applied over top of self-etching primers

Satin Finish – 20-30% Gloss

| | | |
|---------|---|----------|
| 10025Z | Original Chassis Black, Aerosol, 14 oz. | \$19.99 |
| 10043ZP | Original Chassis Black, Quart | \$49.99 |
| 10425ZP | Original Chassis Black, Gallon | \$149.99 |

EXCLUSIVE

Gloss Finish – 85% Gloss

| | | |
|---------|---|----------|
| 10000Z | Original Chassis Black, Aerosol, 14 oz. | \$19.99 |
| 10354ZP | Original Chassis Black, Quart | \$39.99 |
| 33995ZP | Original Chassis Black, Gallon | \$149.99 |



Extreme Chassis Black®

- Resistant to brake fluid and fuel
- Multiple coats can be applied without lifting
- More durable with improved resistance against corrosion, chips and scratches
- Can be applied over Rust Encapsulator® or Chassis Black® Primer
- Aerosol covers approx. 8-10 sq. ft., quart approx. 40 sq. ft.
- NOTE: Extreme Chassis Black® cannot be applied over top of self-etching primers

Satin Finish – 25-30% Gloss

| | | |
|---------|---|----------|
| 11175Z | Extreme Chassis Black, Aerosol, 14 oz. | \$21.99 |
| 11176ZP | Extreme Chassis Black, Quart | \$49.99 |
| 33991ZP | Extreme Chassis Black, Gallon | \$189.99 |
| 11193Z | Extreme Chassis Black Primer, Aerosol, 14 oz. | \$19.99 |

Gloss Finish – 85% Gloss

| | | |
|---------|--|----------|
| 11172Z | Extreme Chassis Black, Aerosol, 14 oz. | \$21.99 |
| 11173ZP | Extreme Chassis Black, Quart | \$49.99 |
| 33992ZP | Extreme Chassis Black, Gallon | \$187.99 |
| 11194ZP | Extreme Chassis Black Primer, Quart | \$49.99 |



2k Ceramic Chassis Black®

A super-durable coating that's tough as nails. Proprietary formulation blends finely ground ceramic particles into a high-quality, two-component, 4-1 chemical base (quarts requires 21854Z Activator). Provides a chip and chemical-resistant armored coating, incredible UV resistance and a finish second to none. Easily applied with your HVLP spray gun (1.5-1.7mm tip). Apply over Eastwood's 2K Epoxy Primer for the ultimate no-worry, factory-correct finish. Two quarts required for full-frame vehicles. Not for sale or use in California.

Satin Finish – 25-30% Gloss

| | | |
|---------|--|----------|
| 14146Z | 2K AeroSpray Chassis Black Satin Aerosol | \$31.99 |
| 50430ZP | 2K Satin Ceramic Chassis Black, Quart | \$56.99 |
| 54298ZP | 2K Satin Ceramic Chassis Black, Gallon | \$210.99 |
| 21854Z | Urethane Activator, 8 oz. | \$24.99 |

Gloss Finish – 85% Gloss

| | | |
|---------|--|----------|
| 14145Z | Extreme Chassis Black, Aerosol | \$31.99 |
| 50429ZP | Extreme Chassis Black, Quart | \$56.99 |
| 54299ZP | 2K Gloss Ceramic Chassis Black, Gallon | \$210.99 |





Traditional Method



Contour DSB

Laser straight panels with almost no dust!
Don't believe it, watch the video at Eastwood.com/DSB

Collects over 95%
of sanding dust!



Eastwood Elite Contour DSB Dustless Sanding Block System

**SPECIAL
INTRODUCTORY
OFFER**

NEW



- Everything you need to get started! Just add sandpaper and a shop vacuum
- Save Time – Less time cleaning and unclogging paper
- Save Money – Paper lasts longer because clogging is greatly reduced
- Work year-round – Sand inside with almost no mess any time

Item #65500

\$99⁹⁷ SAVE \$20

NEW



PSA Sandpaper for the Contour DSB

- Available in a variety of grits
- Sanding rolls are 2.75" wide and a generous 40.50' (13.5 yards) in length

Item #65485

\$39⁹⁹

NEW



Contour DSB 5" Block

- Designed to work with the Eastwood Elite Contour DSB System
- Great for tight areas
- Use with DSB Sandpaper

Item #65497

\$29⁹⁹

NEW



Contour DSB 16" Block

- Designed to work with the Eastwood Elite Contour DSB System
- Make large panels perfectly straight
- Use with DSB Sandpaper

Item #65498

\$69⁹⁹

Contour Premium Body Filler

- Superior coverage & feather edging
- Built-in rust inhibitors & self-etching properties
- Compare to Rage Ultra – Easy to spread & easy to sand!

13520ZP Contour Premium Body Filler, .8 Gal. **\$84.99**

14757ZP Contour Premium Body Filler, 25.3 oz. **\$24.99**



Contour Products

High strength, microfiber reinforced filler for fiberglass, steel, aluminum, & SMC

14756ZP Contour Light Weight Short Strand Body Filler, 0.8 Gal. **\$99.99**

Excellent for metal working – Flexible, won't sag, superior corrosion resistance & adhesion

13518ZP Metal Repair Compound, 25 oz. **\$41.99**



Sprayable Polyester Surfer

- High build with excellent filling capability
- Easy to sand with no shrinkage
- Excellent adhesion to metal, fiberglass, & body filler

13523ZP Sprayable Polyester Surfer, Gal. **\$119.99**

13522ZP Sprayable Polyester Surfer, Quart **\$39.99**



Polyester Glazing Putty

- Formulated to fill pinholes, sand scratches, & imperfections
- Apply to large areas or mix with filler to improve spreading

13521ZP Polyester Glazing Putty, 24 oz. **\$32.99**

14758Z Polyester Glazing Putty, 5 oz. **\$17.99**





Hot Stapler Plastic Repair System

Eastwood's Hot Stapler is a precision-engineered tool that helps you make solid, permanent repairs of breaks, cracks and tears in rigid or flexible plastic parts. Includes 300 various staples.

Item #13650

\$139⁹⁹

Visit Eastwood.com for more staples



Don't replace what you can fix!



Melt staples into the plastic pieces.



Clip off staple ends.



Durable repairs save the cost of replacement parts.



EXCLUSIVE



Eastwood Fender Roller

- Easily increase tire to fender clearance
- Repair wheel arch collision damage
- Adjustable roller controls forming
- Non-marring Delrin® roller preserves finish
- Fits a wide range of vehicles
- Perfect for lowered vehicles and large wheels

Item #31158

\$89⁹⁹*

**Not returnable – If defective, Eastwood will replace the tool

Eastwood Paintless Dent Removal Kit

The Eastwood Paintless Dent Removal Kit includes all the professional-use components needed to remove shallow dents and dings quickly and easily, without expensive paintwork. Perfect for pulling hail damage and most common parking lot and shopping cart mishaps.

Item #16145

\$79⁹⁹

16146

Replacement Glue Sticks, 9 Piece

\$13.99

16147

Replacement Pull Button Set, 9 Piece

\$9.99



Select the Plastic Pull Button that best matches the size and shape of the dent to be pulled. Apply glue.



Operate the chosen pulling device to remove damage.



Carefully remove glue with nylon scraper. Note: Be careful if using on a vehicle that has been resprayed – finish may lift.



Line Board

Item #16185

\$19⁹⁹



Wedge Kit

Item #16187

\$9⁹⁹

NEW



Eastwood Rolling Detailing Stool

- Durable Powder Coated Steel Frame
- Slide Out Multi-Compartment Tray
- Swivel Casters (2 Locking)
- Wide Contoured Seat
- 300 lbs. Weight Capacity

Item #59702

\$59⁹⁹

NEW



Eastwood Bucket Dolly

The Eastwood Bucket Dolly provides a convenient method of adding wheeled mobility and storage to any utility bucket (Not Included) with a base that has a diameter between 10-3/16 and 11-1/4 inches.

Item #56372

\$34⁹⁹



Eastwood Elite HotCoat PCS-1000 System

Best Performance, Best Value, Best Service!

- Best value and performance backed by the innovators of DIY Powder Coating
- Kit includes Gun, Control Unit, and 5 lb. Hopper

Item #16164

\$799⁹⁷ SAVE \$200



Unparalleled Powder Coating Performance

Revolutionary 5lb. Hopper Feed Pump
Eliminates surging and spitting

Gun Air Pressure Accurately adjust air pressure for best coverage

Awesome 100kv Output Adjustable from 10-100 kilovolts – coat everything from a tumbler to a truck frame

Fluidizing Air Pressure Gauge Set and forget for precise powder delivery

Gun Electronics Robust and reliable: designed for long life



Additional Hoppers Available
Great for storing clears, metallics, and frequently-used colors

54313 2lb Hopper for Elite HotCoat PCS-1000 Powder System **\$75.99**

54300 5lb Hopper for Elite HotCoat PCS-1000 Powder System **\$159.99**



Eastwood HotCoat Powder Booth

- 4' x 4' x 6' with LED fl at panel light fixture
- Exclusive design includes floor, plus filter wall configuration
- Non-sparking exhaust fan

Item #33276

\$4,999⁹⁹*



Eastwood HotCoat Powder Oven

- 4' x 4' x 6'
- Operates on 240 volts
- Quickly gets to 400°F in under 15 minutes
- Easily maintains 400°F curing temp.

Item #33273

\$6,199⁹⁹*



Powder Coating and Paint Rack Kit

Weld-together rack is perfect for our 4x4x6 Powder Oven and Booth. Can even be used as a paint rack for parts. Heavy-duty tubing is pre-cut for easy assembly. Comes unassembled, requires minimal welding. Holds up to 300lbs.

Item #33912

\$359⁹⁹

Dual-Voltage Powder Coat Gun

The PCS-250 Dual-Voltage Powder Coating Gun provides the ability to select a normal 15Kv setting for smaller parts, hard-to-reach corners, interior and tighter areas. Switch to the higher 25Kv setting for faster application on larger projects plus superior multiple coat coverage, increased powder attraction and minimal powder waste.

- **Increased powder attraction** – Faster coating and less waste.
- **Better Transfer Efficiency** – Works great for two-toning and custom effects.
- **Minimize Faraday Cage Effect** – Lower power setting reduces charge-build up in parts.

Item #33278

\$159⁹⁹



The Original DIY Powder Coat Gun Still the Best in Value!

The PCS-150 Single Voltage System is a new and improved version of the original "DIY" Powder Coating Gun, the most trusted entry-level system. The basic kit includes the original DIY Powder Gun, power source, and instruction book.

- **Easy to use** – works with an air compressor and a dedicated electric oven
- **Easy clean-up** – excess can be swept up, and the gun quickly cleans-up with air
- **Economical** – pro results at a fraction of the cost of a powder shop
- **Guarantee** – one-year limited warranty

Item #33272

\$119⁹⁹



Powder Coating Accessories Kit

- 1/2" High Temperature Fiberglass Masking Tape
- (30) High Temp Silicone Plugs Assortment
- 1 lb spool Safety Wire .041"
- 8 oz. High Gloss Black Powder
- (3) 8 oz. plastic bottles & lids
- (2) Disposable In Line Air Filters

Item #11536K

\$59⁹⁹

High Temp Masking Tape

Fiberglass Strand-Reinforced High Temp Masking Tape
Mask threads and close-tolerance areas.

- 36 yd. rolls Good to 500°F+

16322 High-Temp Tape, 1/2" \$21.99

16324 High-Temp Tape, 1" \$30.99



Blue Fine Line Masking Tape Conforms to curved surfaces.

- 72 yd. rolls Good to 400°F+

32054 High-Temp Tape, 1/8" \$9.99

32055 High-Temp Tape, 1/4" \$9.99



Green Polyester Masking Tape Offers a finer parting line

- 72 yd. rolls Good to 400°F+

16315 High-Temp Tape, 1/8" \$8.99

16316 High-Temp Tape, 1/4" \$9.99

16317 High-Temp Tape, 1/2" \$9.99

16318 High-Temp Tape, 3/4" \$14.99

16319 High-Temp Tape, 1" \$19.99

16321 High-Temp Tape, 2" \$29.99



Powder Coat Colors

Protect wheels, oil pans, sway bars, shocks and frames while also making them look great.

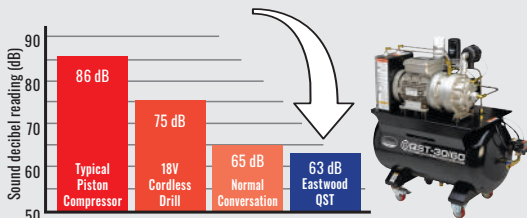
Visit Eastwood.com for 100+ Powders



NEW

Eastwood
Elite

Eastwood's Elite Scroll Compressor - now includes FREE Moisture Drain Kit. This Scroll will power all the air tools in your home shop and do it more quietly.



Quiet Scroll Technology is the most innovative air compressing technology for optimal power, performance, and noise reduction on the market today. With the rotor being the only moving component, wear and noise is minimized; performance maximized.

- **INNOVATIVE:** Direct drive cast iron scroll pump
- **POWERFUL:** 12.7 CFM @ 90 psi, 145 psi max. 240 VAC, 17 full-load amps
- **RELIABLE:** 100,000 hour pump life with 4 HP, 100% continuous-duty super-efficient motor
- **COMPACT:** 60-gallon performance in a 30-gallon size

Eastwood Elite QST 30/60 Scroll Air Compressor with Quiet Technology

Item #63600

\$2,149⁹⁷ **SAVE \$150**

3YR
WARRANTY



Eastwood's Elite 3-Phase Scroll Compressor will power all the air tools in your business, quietly.

Not only is the new **Eastwood Elite 3 Phase Scroll Compressor** powerful enough to run your entire shop and multiple air hogs at once, it's so quiet you'll never even know it's running! QST® Quiet Scroll Technology allows this compressor to run at 100% efficiency, and that means you get the same performance from an 80 gallon tank as you would using a standard compressor with a much larger 120 gallon tank. With fewer moving parts than a typical piston compressor, friction is greatly reduced, and that means a better machine with longer life.

- Powerful 10HP motor delivers 31.8 SCFM @ 90 psi
- 100,000-hour pump life and 100% duty cycle
- More power and efficiency in a smaller, nearly silent package

32500 Eastwood Elite QST®-80/120 Scroll Compressor **\$4,999.99**

32621 Eastwood Elite 80-Gallon Air Tank **\$1,049.99**

98022 80/120 Compressor and 80-Gallon Air Tank Kit **\$5,799.97** **SAVE HUNDREDS!**



3YR
WARRANTY

PAINTING YOUR CAR MADE EASY!

From start to finish, Eastwood's 4-step paint system covers you every step of the way



1

PRIMER
Epoxy

2

PRIMER
Urethane

3

COLOR

4

CLEAR

Visit Eastwood.com for resources on how to paint your car.

Epoxy 1:1 Primer Excellent adhesion and corrosion resistance

- DTM (Direct-To-Metal)
- Easy to sand 2-3 days after applying
- 2-Component Primer/Sealer dries fast
- **Must purchase Catalyst with Quart or Gallon Primer**



| | | | | | |
|----------|------------------------------|---------|----------|-------------------------------|----------|
| 50242ZP | Epoxy Primer, Quart, Gray | \$44.99 | 50244ZP | Epoxy Primer, Gallon, Gray | \$104.99 |
| 12785ZP | Epoxy Primer, Quart, Black | \$41.99 | 50246ZP | Epoxy Primer, Gallon, Black | \$104.99 |
| 14759ZPA | Epoxy Primer, Quart, White | \$47.99 | 14760ZPA | Epoxy Primer, Gallon, White | \$118.99 |
| 50243ZP | Epoxy Primer Catalyst, Quart | \$34.99 | 50245ZP | Epoxy Primer Catalyst, Gallon | \$83.99 |

Urethane 4:1 Primer Apply over epoxy, base metal or body filler

- Can be applied over base metal (treated with Eastwood Fast Etch)
- Fills well, sands easily with excellent color hold-out
- **Must purchase Activator with Quart or Gallon Primer**

| | | | | | |
|----------|------------------------------------|----------|---------|---|----------|
| 14003ZPA | Urethane Primer, Gallon, Black | \$104.99 | 50300ZP | Low VOC Urethane Primer, Gallon, Gray | \$152.99 |
| 14005ZPA | Urethane Primer, Gallon, Tan | \$104.99 | 50309ZP | Low VOC Urethane Primer Catalyst, Medium, Quart | \$62.99 |
| 50240ZP | Urethane Primer, Gallon, Gray | \$104.99 | | | |
| 50241ZP | Urethane Primer 2K Catalyst, Quart | \$49.99 | | | |

Optiflow Roll-On Paint System The easiest way to prime

- Rolls on so smooth everyone will think the great results came from an expensive HVLP spray gun!
- Great for single panels or entire vehicles
- Save thousands when you do it yourself
- No overspray with minimal masking and cleanup
- Specialty formulated primer for roll-on application with rollers designed for this process
- Superior 2K results – lays smooth and sand easily
- All components sold separately or in “all-you-need” kits

| | | |
|---------|--|----------|
| 98003ZP | Basic Epoxy Primer Kit | \$330.99 |
| 98006ZP | Complete Epoxy Primer Kit | \$439.99 |
| 98004ZP | Basic Epoxy and Urethane Primer Kit | \$551.99 |
| 98005ZP | Ultimate Epoxy and Urethane Primer Kit | \$661.99 |



98005ZP



After



Concours LT Gun w/ 1.3 Nozzle

Requires only 4.25 CFM @ 30 psi. Stainless steel internals and aluminum anodized body to resist corrosion.

- Includes air cap, 1.3mm nozzle, 600ml cup, and cleaning kit
- Additional nozzles available

Item #15639

\$99⁹⁹



Concours 2 HVLP Paint Gun Kit

Great for pro or DIYer. Reference marks on knobs for repeatable settings.

- Includes 1.7mm and 1.3mm nozzles, 600ml cup, cleaning kit, quick disconnect fitting, regulator and case

Item #16287

\$179⁹⁹

16288 1.3mm Needle/Nozzle Kit \$30.99

16289 1.7mm Needle/Nozzle Kit \$28.99



Concours PRO HVLP Paint & Detail Gun Kit

- Features ultra-fine atomization, stainless steel internal passages, to work with smaller compressors
- Requiring some of the lowest CFMs of any HVLP paint guns (6.5 CFM @ 30 psi)

Item #14776

\$299⁹⁹

14771 Concours PRO Paint Gun \$188.99

14772 Concours PRO Detail Gun \$113.99



Eastwood Elite P500 Primer Paint Gun

Elite P500 Primer Gun comes equipped with stainless steel nozzle sets for spraying all primers – from epoxy to high-build.

Item #54271

\$349⁹⁹



Eastwood Elite CC500 Color/Clear Paint Gun

Elite CC500 Gun comes equipped with stainless steel nozzle sets for spraying singlestage, base, and clear coats for the ultimate appearance.

Item #54270

\$349⁹⁹



Rockwood 10 Piece HVLP Paint Gun Set

- 2 Large Guns, 500ml Nylon Cups, 1.4mm & 1.7mm Nozzles,
- 10-13 CFM @ 30-43 psi
- Detail Gun, 100ml Nylon Cup, 0.8mm Nozzle, 4-5 CFM @ 320-30 psi
- 0-180 PSI Regulator & accessories

Item #16293

\$89⁹⁹

16292 Rockwood 8 Piece HVLP Paint Gun Set, as above without Detail Gun & Cup \$64.99

Automotive Finishes

Complete your restoration, repair or resto-mod with one of Eastwood's premium paint colors

Visit Eastwood.com to Shop Single Stage, Basecoat and Even 75,000 OEM Colors Available



EXCLUSIVE



Eastwood PRE Painting Prep

Proper surface preparation is key to a top-quality finish. PRE removes dirt, wax, polish, grease, silicone, buffing compound, even road tar! Ideal for cleaning parts before powder-coating. Spray or wipe on and wipe off. Available in original and Low-VOC formulas.

| | | |
|---------|----------------------------|---------|
| 10041Z | PRE Painting Prep, Aerosol | \$12.99 |
| 11949Z | Low-VOC PRE, Aerosol | \$14.99 |
| 10194ZP | PRE Painting Prep, 30-oz. | \$21.99 |
| 10594ZP | PRE Painting Prep, Gallon | \$55.99 |

NEW



Eastwood PRE Green

50 State Compliant PRE GREEN Paint Prep Cleaner and Degreaser has no harsh chemicals

- Removes silicone, dirt, wax, polish and grease to promote primer, paint and powder adhesion

| | | |
|-------|--------------------|---------|
| 60022 | Pre Green - Quart | \$26.99 |
| 60023 | Pre Green - Gallon | \$49.99 |
| 60024 | Pre Green - Wipes | \$68.99 |



Eastwood Air Complete Filtration System (CFS)

Includes regulator and a high capacity canister with 1-micron coalescing filter and petcock to drain trapped moisture.

- Air pressure regulator
- 0 to 150 psi air pressure gauge
- Integral mounting bracket

Item #31633
\$125⁹⁹

| | | |
|-------|--|---------|
| 31882 | Eastwood Air Complete Filtration System Filter | \$11.99 |
| 51567 | DVB QC3 Air Filter Desiccant Refill | \$69.99 |



Eastwood Two Stage Desiccant Dryer System

Keep your paints & powder free of moisture & debris

- Removes particles down to 70 microns
- Oil coalescing filter
- Sight glass & pop up indicator
- 1/2" NPT, max 150 psi & 15 CFM

Item #20473
\$440⁹⁹



Eastwood 4 Stage Dry Air System

The ultimate 4-stage dry air system

- 1st two stages remove debris down to 40 microns
- 3rd stage, oil coalescing filter removes particulates to .01 microns
- 4th stage desiccant dryer removes 99.97% of moisture & oil vapors
- Includes sight glasses, drain valves, pop-up alert indicator, connectors

Item #20474
\$629⁹⁹



Portable Paint Rack

- 70" wide, adjustable frame extends from 60" to 80" high
- 6 hooks to hold parts for painting or drying
- Locking casters

Item #16144
\$109⁹⁹



Rockwood Pneumatic Paint Shaker

- Requires just 70 psi and 4.3 CFM to deliver pro quality mixing at 1,110 cycles per minute
- Lightweight, compact design features heavy duty construction
- Handles all standard round paint cans from pint to gallon
- Grease fitting for easy serviceability

Item #15205
\$179⁹⁹



Tree-Type Masking Station

Safely stores your masking paper and tape while keeping it at arm's length. Holds 4 rolls of paper, up to 18" wide.

| | | |
|-------|--|---------|
| 15964 | Tree-Type Masking Station | \$99.99 |
| 14742 | USC Plastic Masking Sheet, 12' x 400' | \$33.99 |
| 14743 | USC Polycoated Masking Paper, 17.5' x 700' | \$56.99 |

PRSRT STD
U.S. Postage
PAID
The Eastwood
Company

263 Shoemaker Road
Pottstown, PA 19464
610.323.9099 >> Eastwood.com



DO THE JOB RIGHT.®



OEM Select Paints

Over 75,000 Colors Now Available!



Easy online ordering by
Make/Model/Year or Paint Code.
Go to Eastwood.com/OEM or call
800.469.7940 to speak with one of
our Paint Experts!

- Great for touch ups, blends or full resprays on your late model or classic.
- Incredible formula mixing accuracy down to ½ of a gram! That's less than ½ a drop.
- Easy to spray! RTS (Ready to Spray) Basecoat that requires no additional reducing.
- Available in pints, quarts & gallons. Aerosol cans, touch up bottles and pens coming soon!



Eastwood.com/OEM | 800.469.7940