



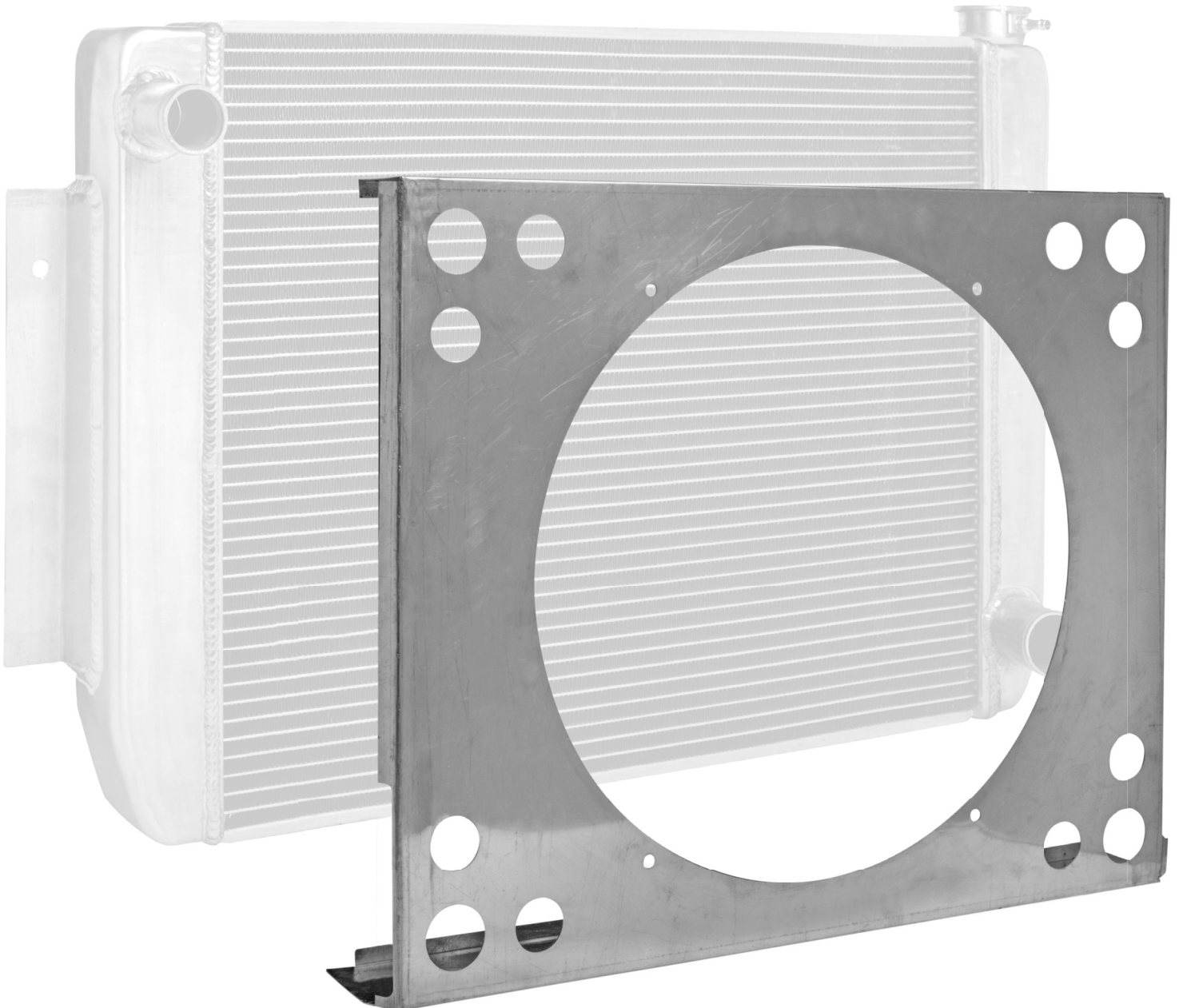
DO THE JOB RIGHT.



ALUMINUM FAN SHROUD

INSTRUCTIONS

Item #20296, #20297, #20298



EASTWOOD MAXX POWER TRI-FLOW RADIATOR SHROUDS are specifically designed to fit the full line of Eastwood Tri-Flow Radiators and will readily accept Eastwood Electric fans. Featuring a perfect-fit, no-tool installation, these Shrouds will provide years of rugged use.

INCLUDES

- (1) Aluminum Fan Shroud
- (4) 6mm socket head cap screws
- (4) 6mm locking nuts

IMPORTANT NOTES

FEATURES

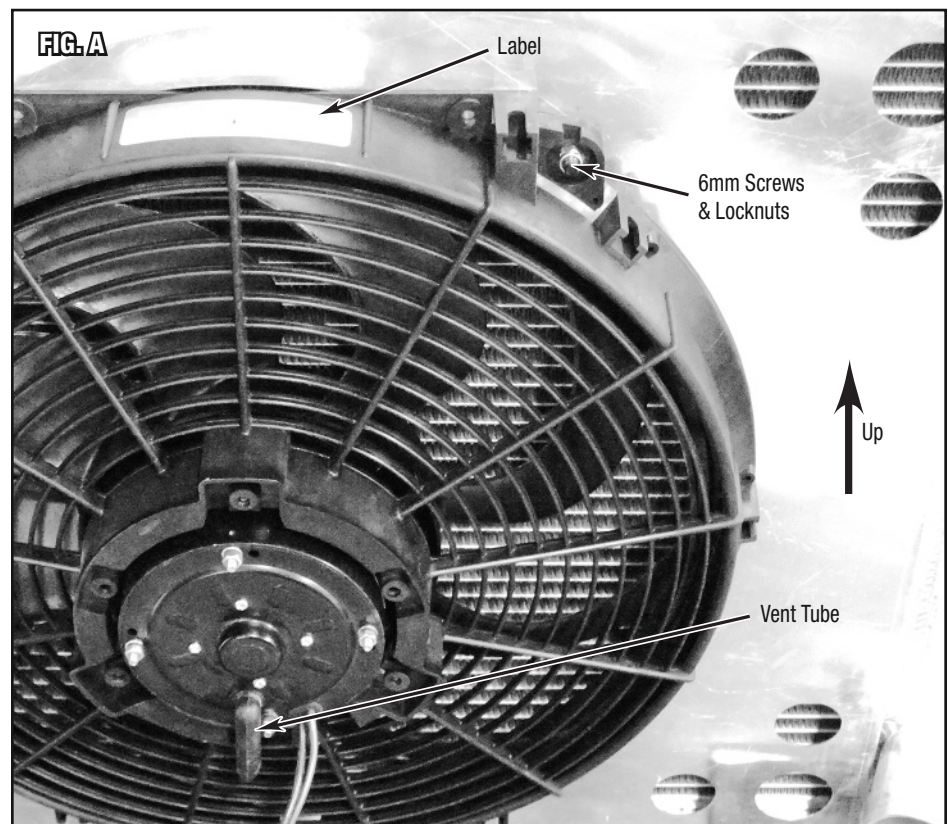
- The Eastwood Maxx Power Tri-Flow Radiator Shrouds are designed for universal custom, high-performance installations and are not specifically intended to directly fit individual make, year and model cars and trucks. Modifications to the vehicle and/or Shrouds may be necessary. Basic to moderate metal fabrication skills are essential.
- This Shroud is designed to be used with a properly sized Eastwood Electric Fan. It may require extensive modification if used with an engine driven fan.
- The Electric Fan must be attached to the Shroud prior to the final installation of the Shroud on the Radiator however; it is advisable to first trial-fit the Shroud to the Radiator then trial-fit the entire Radiator/Shroud/Fan assembly to the car. This will reveal any interference issues between the Shroud and the vehicle and any of its underhood components.

EASTWOOD RADIATOR/SHROUD/FAN FITMENT

Tri Flow Radiator	Fan Shroud	Electric Fan
#20274 / #20150 – 22"W x 19"H x 2"D	#20296	#20244 (14", 1230cfm)
#20275 / #20151 – 26"W x 19"H x 2"D	#20297	#20243 (16", 2175cfm)
#20276 / #20152 – 28"W x 19"H x 2"D	#20298	#20243 (16", 2175cfm)

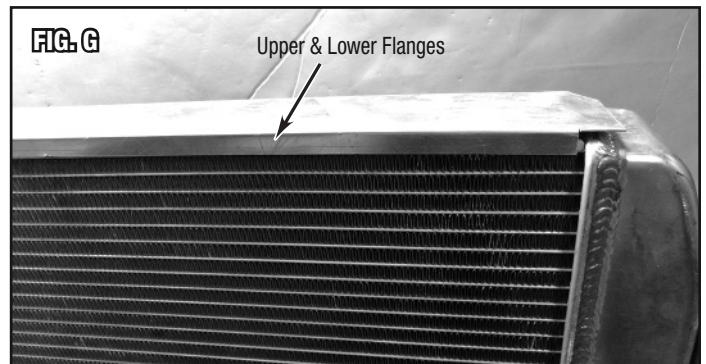
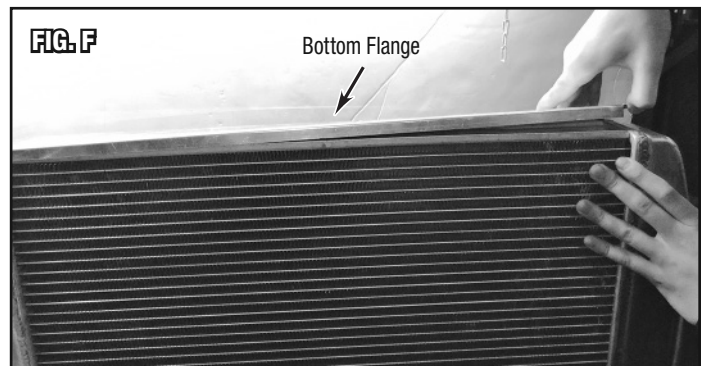
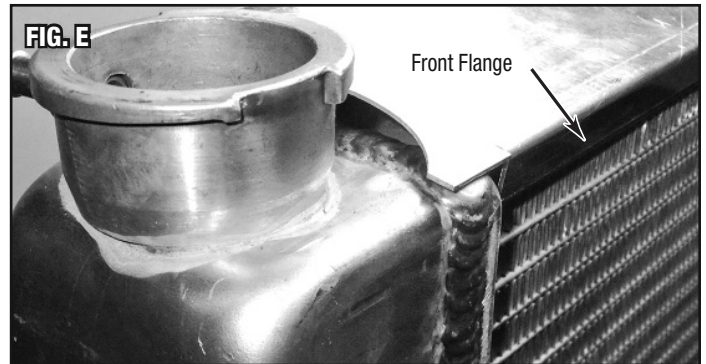
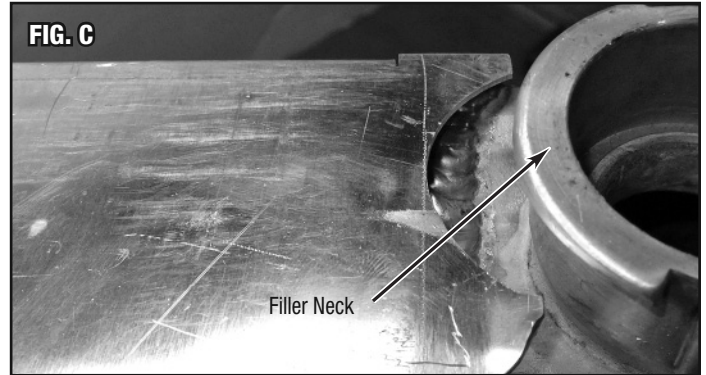
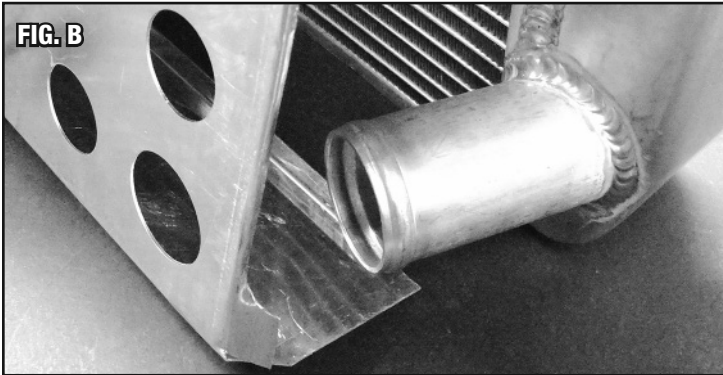
FAN TO SHROUD ASSEMBLY

- The Eastwood Fans are attached to the Shroud with (4) 6mm socket head cap screws and locking nuts requiring a 10mm socket and a 4mm hex key.
- The Fan must be oriented with the label facing upward and the ventilation tube pointing downward (**FIG A**).



INSTALLATION

- The Eastwood Fan Shroud is designed as a perfect-fit, no-tool installation, to fit the corresponding sized Eastwood Radiator. Note that the lower side flanges are cut out to clear the radiator outlet tubes (**FIG B**) and the top plate is clearance cut for the filler neck (**FIG C**).
- Begin by placing the Radiator upright on a firm but non-damaging surface then hook the flange of the upper plate of the Shroud over the front of the Radiator core (**FIG D & E**). **IMPORTANT NOTE:** Use extreme care not to nick, dent or damage the Radiator Core.
- Rotate the Radiator to the upside down position using extreme care not to damage the Filler Neck then pull the flange of the bottom plate up and over the Radiator Core (**FIG F**).
- Be sure both upper and lower flanges are fully and securely clamped around the Radiator Core (**FIG G**).
- The Radiator/Shroud/Fan Assembly is now ready for installation in the vehicle.



If you have any questions about the use of this product, please contact

The Eastwood Technical Assistance Service Department: 800.544.5118 >> email: techelp@eastwood.com
PDF version of this manual is available online >> eastwood.com/20299manual

The Eastwood Company 263 Shoemaker Road, Pottstown, PA 19464, USA
US and Canada: 800.345.1178 Outside US: 610.718.8335
Fax: 610.323.6268 eastwood.com