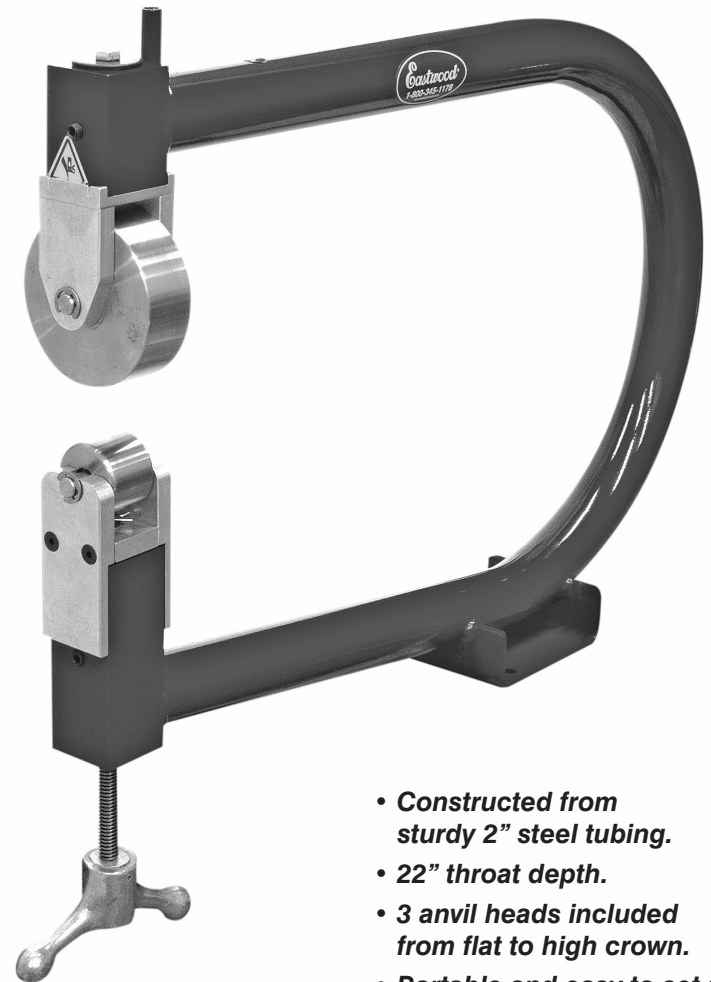


Eastwood
repair • restore • revive

Eastwood English Wheel Assembly Instructions

Part #28116EW



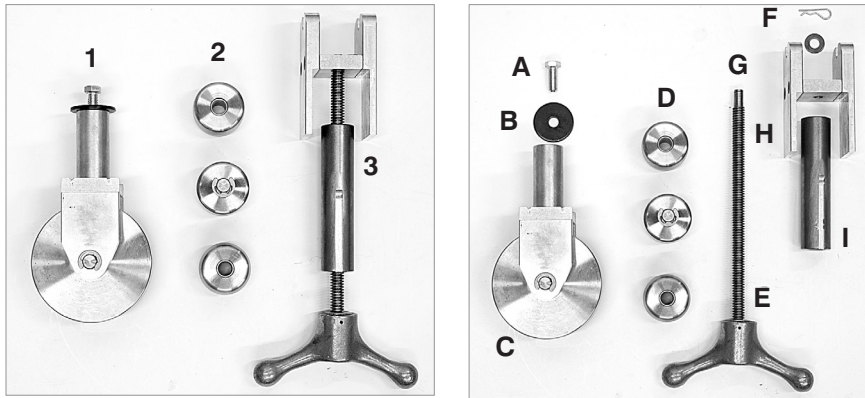
- *Constructed from sturdy 2" steel tubing.*
- *22" throat depth.*
- *3 anvil heads included from flat to high crown.*
- *Portable and easy to set up.*

Features and Description

This English Wheel Components Kit is designed specifically to fit the #28116FO Eastwood Interchangeable English Wheel / Planishing Hammer Frame and is completely interchangeable with the Eastwood #28116PH Planishing Hammer Kit.

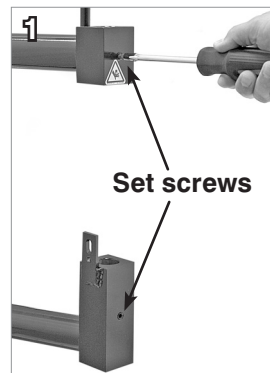
Includes:

- Upper Yoke with 4-1/4" Diameter Wheel Installed.
- Set of three 1-1/2" Diameter Anvils. One Flat, One 5-5/8" Radius and One 2-1/4" Radius.
- Lower Anvil Yoke with Adjustment Handle.

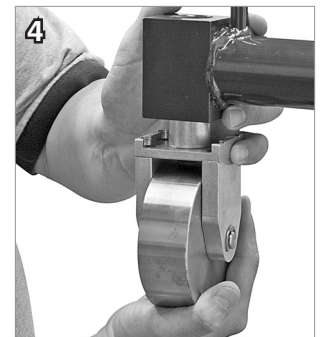
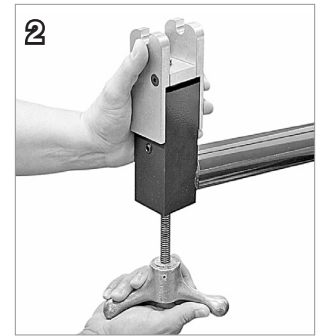


Set Up

1. Mount the frame securely to a workbench or an Eastwood #43512 Variable Height Tool Stand. Four 3/8" bolts (not included) are recommended. Important Note: Be sure that the mounting surface or stand is securely mounted to the floor to avoid tipping which could cause damage to the unit or personal injury.
2. Loosen the set screws located in the upper and lower mounting blocks of the Frame to allow full clearance in the upper and lower bores. (Fig. 1).
3. On the Lower Anvil Yoke assembly, remove the hairpin clip and washers, set them aside then pull the jackscrew shaft and handle assembly out.



4. Place the Lower Anvil Yoke over the lower square block of the Frame with the extended sides placed over the outer and inner lower frame block sides. (when properly located, the shaft cutouts will be inline with the frame). (Fig 2).
5. Place a washer (removed in step 3.) over the turned end of the jackscrew shaft. Slide the long threaded bushing with the jackscrew and handle up into the lower square block of the Frame with the machined groove facing outward and over the set screw in the lower block. Tighten the set screw.
6. Replace the washer and hairpin clip removed in step 3 (Fig 3).
7. Remove bolt and large washer, then slide the Upper Wheel Yoke mounting post up into the upper block of the Frame making sure the 4-1/2" Wheel shaft is in line with the Frame. (Fig 4). Tighten set screw, replace bolt and washer then tighten.
8. Place the shaft through the Anvil of your choice then place into the Lower Anvil Yoke (Fig 5).
9. Your Eastwood English Wheel is now ready for use.



Safety

- Handling metal is a cut hazard so the use of sturdy leather gloves is strongly recommended.
- The moving metal, Wheel and Anvil can easily pinch fingers! Use extreme care not to allow your fingers to get caught between the Wheel, metal surface and Anvil while you work.

A Note About English Wheeling

The skill of using an English Wheel is not complicated and holds no secrets; it simply requires practice, practice and more practice to learn. By following the steps below and practicing, you will have mastered the art of English Wheeling.

Operation

1. Choose the Anvil that most closely matches the desired final metal contour. Note: Optional Radiused Anvils are available from Eastwood. You can acquire them as needed for specific projects as your skill increases.
2. Wear leather work gloves and use extreme care not to get your fingers caught between the metal, the Anvil and Wheel.
3. Place a piece of metal (22 to 18 Ga. Steel, 22 to 14 Ga. Aluminum) between the anvil and the wheel then raise the Anvil by turning the handle until the Anvil just contacts the metal allowing easy rolling between the Anvil and Wheel. Important Note: Do not over tighten the Anvil! Over tightening will crease and harden the metal, creating unnecessary effort and will damage the Anvil surface.
4. Keep in mind that the metal forming is done by passing the metal over the Anvil while pulling it down and shaping it. The Upper Wheel is used as a guide.
5. Grasp the edges of the metal and continue to exert a downward force while rolling it. You will begin to see curvature appear in the metal.
6. Try not to repeatedly pass over the same point in the metal but keep it moving in an "X" or "W" pattern over the Anvil for best results.
7. You are well on your way to becoming an expert English Wheeler! Continue practicing and you will be proud to have a nearly forgotten skill that few possess.

If you have any questions about the use of this product, please contact
The Eastwood Technical Assistance Service Department:
1-866-759-2131 email: techelp@eastwood.com



The Eastwood Company

263 Shoemaker Road, Pottstown, PA 19464, USA
US and Canada: 1-800-345-1178 Outside US: 610-718-8335
fax: 610-323-6268 www.eastwood.com

Instruction Manual #28116EWQ - Rev. 3/08