



DO THE JOB RIGHT.®

Item #31654

WORK BENCH

INSTRUCTIONS



The **EASTWOOD WORK BENCH** features a spacious 61" x 30" work surface with a 2" retaining fence on three sides. The heavy, all steel construction supports up to a total loaded weight of 1600 lbs. [725kg.] with a fully open frame to allow for under bench storage or placement of welders, compressors and other equipment.

CONTENTS

⚠ NOTICE

This Workbench is shipped in 2 boxes. The components contained in each are listed below.

Box 2 Includes:

- (2) Rear Legs - [A] (Identified by: 8 round holes, 4 slotted holes and 2 notches).
- (1) Left Front Leg - [B] (Identified by: 8 round holes, 2 slotted and 1 notch on left side).
- (1) Right Front Leg - [C] (Identified by: 8 round holes, 2 slotted and 1 notch on right side).

Box 1 Includes:

- (4) Foot Plates - [D]
- (1) Long, Rear Brace - [E]
- (2) Short, Side Braces - [F]
- (1) Table Top - [G]

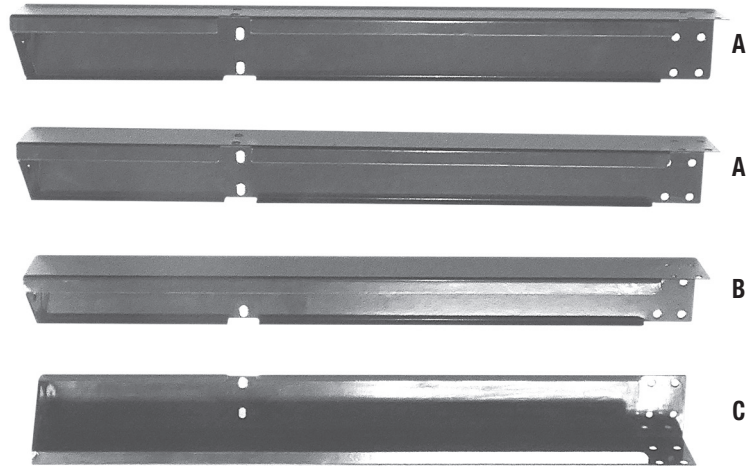
NOTE: The *Rear* edge of the Table Top is identified by 3 Thread Inserts while the *Front* edge has none.

- (1) Long, Rear Fence - [H]
- (2) Short, Side Fences - [J]
- (1) 5mm Hex Key - [L]

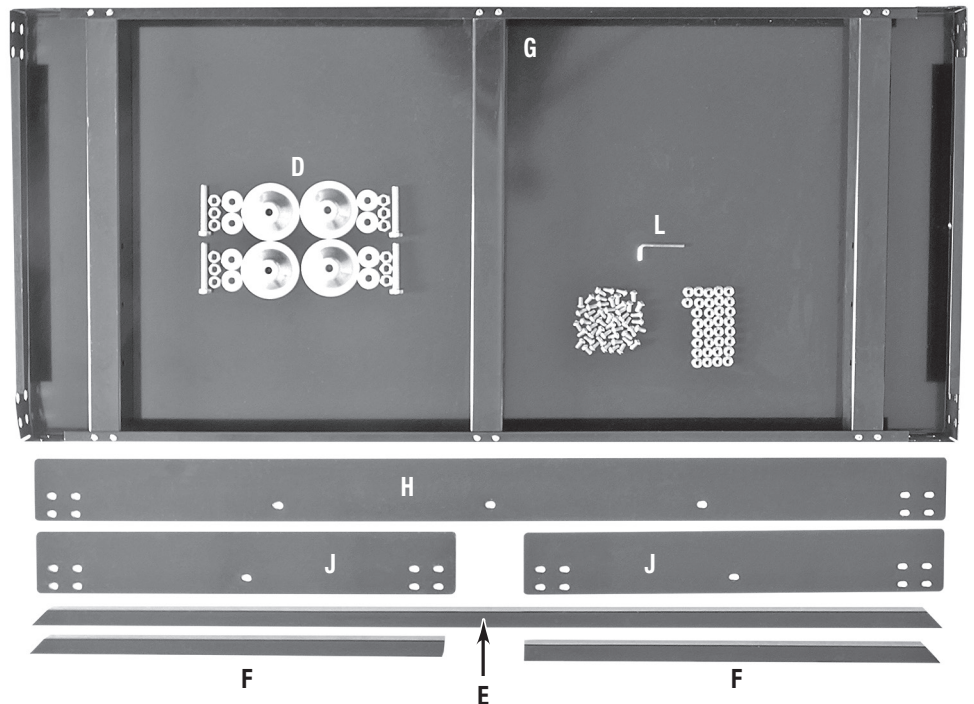
Included Hardware:

- (4) M12 x 75 Bolts
- (12) M12 Nuts
- (8) M12 Washers
- (48) M8 Socket Head Bolts
- (32) M8 Self-Lock Nuts

Box 2



Box 1



TOOLS REQUIRED

- Two 19mm wrenches
- One 12mm wrench
- Level

SAFETY INFORMATION

The following explanations are displayed in this manual, on the labeling, and on all other information provided with this product:

⚠ DANGER

DANGER indicates a hazardous situation which, if not avoided, will result in death or serious injury.

⚠ WARNING

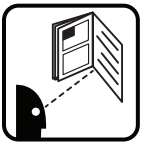
WARNING indicates a hazardous situation which, if not avoided, could result in death or serious injury.

⚠ CAUTION

CAUTION used with the safety alert symbol, indicates a hazardous situation which, if not avoided, could result in minor or moderate injury.

⚠ NOTICE

NOTICE is used to address practices not related to personal injury.



⚠ READ INSTRUCTIONS

- Thoroughly read and understand this manual before using.
- Save for future reference.



⚠ WARNING FALL HAZARD!

- Awkward, out of balance body positions may be attempted while trying to reach specific areas of objects placed on the Work Bench during use. Failure to ensure proper footing can quickly result in a fall which could inflict serious personal injury or property damage.
- This Work Bench is intended for use in a shop environment only.



DO NOT concentrate a heavy load to any corner or edge of the Work Bench. This can cause the balance to shift suddenly, tipping the Work Bench forward which can quickly cause severe injury!

DO NOT exceed the rated 1600 lbs. [725 kg.] weight capacity.

DO NOT use as a seat.

DO NOT stand on the Work Bench.

ASSEMBLY

FOOT TO LEG ASSEMBLY

- Place one of the M12 x 75mm Bolts through a Foot Plate [A] with the head in the recess then thread on an M12 Nut and tighten securely using 2 19mm wrenches (not included) (FIG 1).
- Thread another M12 Nut 2-1/4" onto the M12 thread of each Foot assembly and add an M12 Washer.
- Insert the threaded stem of the assembled Foot through the hole in the triangular plate at the bottom of the Leg [A], [B] & [C].
- Add another M12 Washer then thread on an M12 Nut (FIG 2). Tighten firmly but allow for final leveling adjustment after complete assembly.
- Repeat for remaining three sets.

⚠ CAUTION

The Eastwood Work Bench consists of moderately heavy metal components which can cause potentially serious injuries if allowed to drop. Avoid pinching hands while handling parts during assembly. Obtaining the assistance of a helper during assembly is necessary. The use of safety shoes is advised.

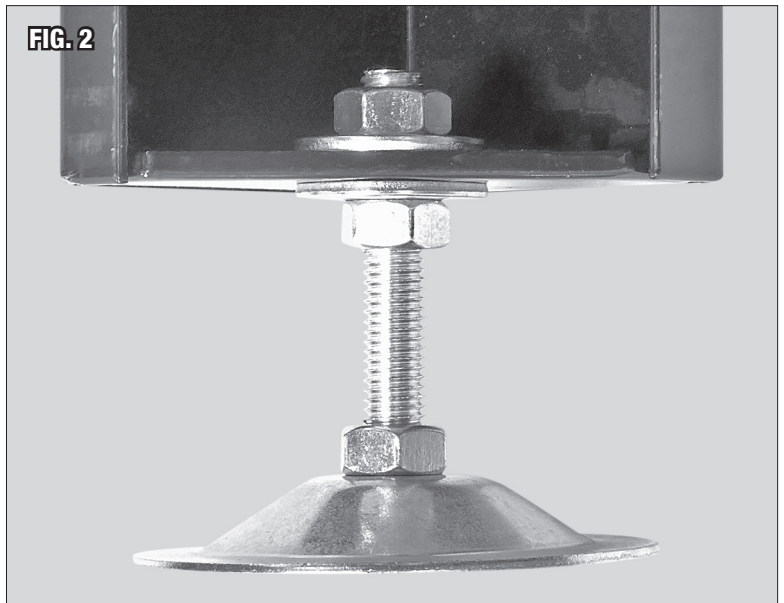
⚠ NOTICE

When assembling components in the next stages, it is important to only hand tighten all hardware to allow for alignment.

FIG. 1



FIG. 2

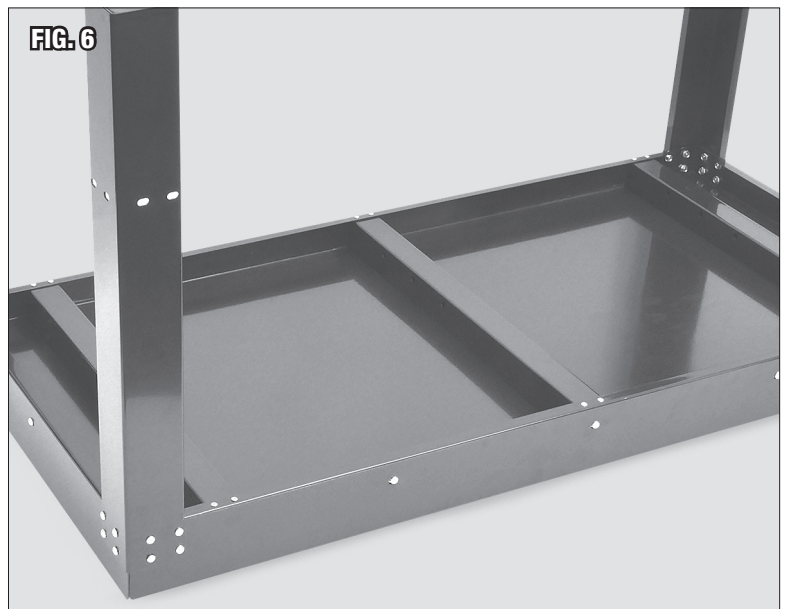
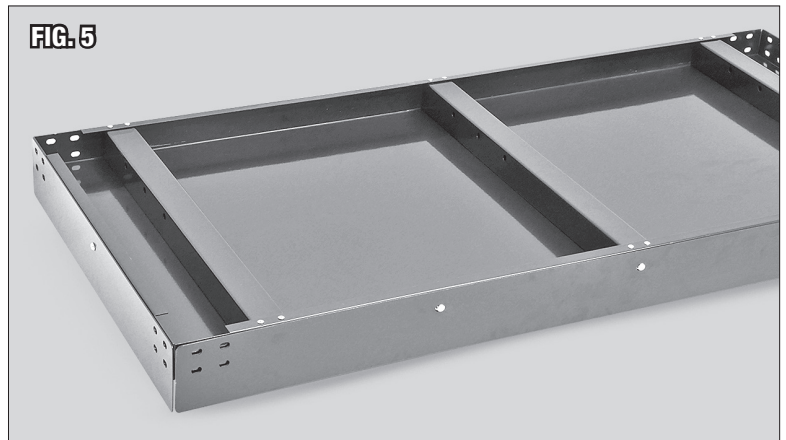
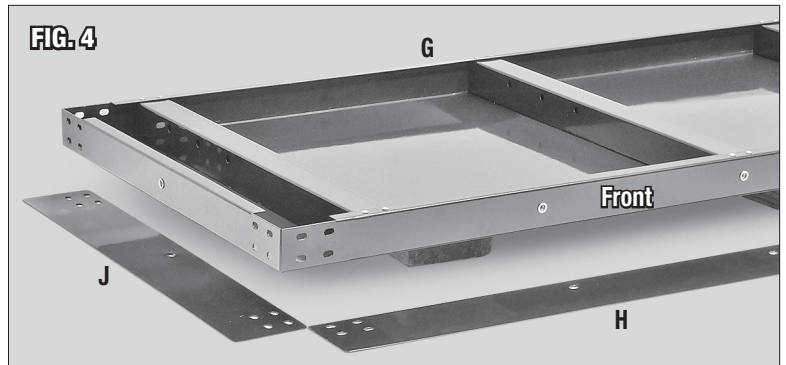


FENCE TO TABLE TOP ASSEMBLY

- Place the Table Top **[G]** upside down and supported on wooden blocks or other secure material capable of keeping the top surface raised at least 2-1/2" off the floor and with the rear edge facing outward (**FIG 3**).
- Arrange the Long, Rear Fence **[H]** and the two Short, Side Fences **[J]** along the respective Table Top edges (**FIG 4**).
- With the lower edge of the Fences flush with the underside of the Table Top and the mounting holes aligned with the threaded inserts in the rear and side edges of the Table Top, attach them with five M8 Socket Head bolts using the included 5mm Hex Key (**FIG 5**). Finger tighten only.

LEGS TO TABLE TOP ASSEMBLY

- Set a Rear Leg **[A]** (having 8 round holes, 4 slotted holes and 2 notches) in place with all 8 holes aligned then begin placing M8 Socket Head Bolts through the Rear Leg **[A]**, Rear Fence **[H]**, or Side Fence **[J]**, and Top **[G]** and secure with M8 Self-Locking Nuts. Finger tighten only (**FIG 6**).
- Repeat with 2nd Rear Leg **[A]**.
- Next, mount the Left Front Leg **[B]** (8 round holes, 2 slotted and 1 notch on left side) by placing M8 Socket Head Bolts through the Left Front Leg and Top **[G]**, or Side Fence **[J]** and Top **[G]**, then secure with M8 Self-Locking Nuts (**FIG 6**). Finger tighten only.
- Lastly, mount the Right Front Leg **[B]** (8 round holes, 2 slotted and 1 notch on right side) by placing M8 Socket Head Bolts through the Right Front Leg and Top **[G]**, or Side Fence **[J]** and Top **[G]**, then secure with M8 Self-Locking Nuts. Finger tighten only.



BRACES TO LEGS ASSEMBLY

- Set the long, Rear Brace [E] into the Leg notches with the Threaded Inserts aligned with the two slots in the rear face of each Rear Leg [A] (FIG 7).
- Secure with two M8 Socket Head bolts on each side using the included 5mm Hex Key to lightly hand tighten.
- Install the two short, Side Braces [F] with the Threaded Inserts aligned with the two slots in the side face of each Rear Leg [A] and the Left and Right Front Legs.
- Secure with two M8 x 15 Socket Head Bolts per corner using the included 5mm Hex Key (FIG 7). Lightly hand tighten.

⚠ CAUTION INJURY HAZARD!

The assembled Work Bench is heavy and cumbersome requiring the help of a capable assistant. DO NOT attempt to lift or move it without help.

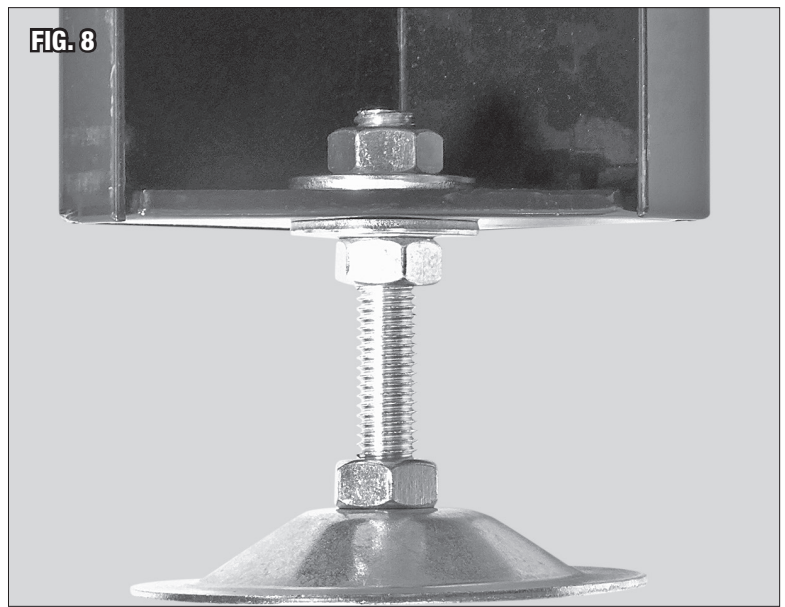
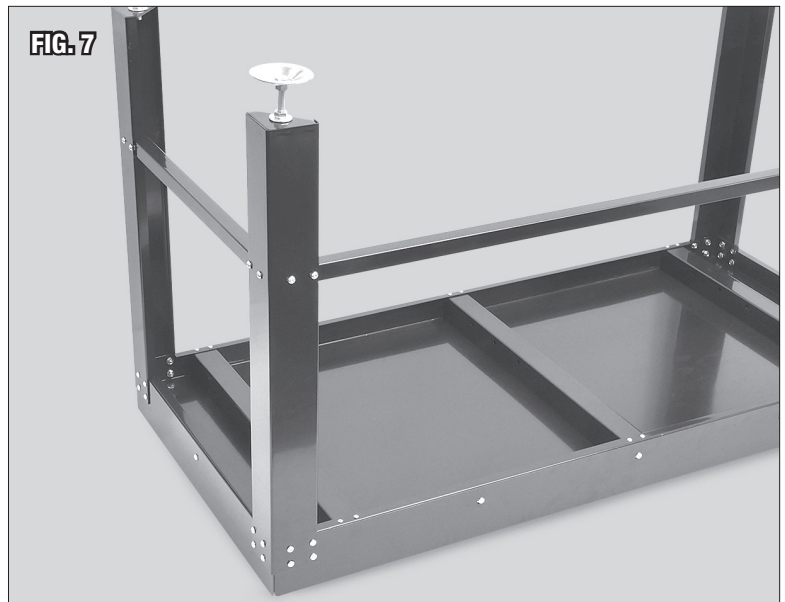
- With a helper, flip the loosely assembled unit over to the upright position, resting on it's Feet.
- Check all components for squareness then final tighten all hardware securely with the Included 5mm Hex Key [L] and a 19mm wrench (not included).

LEVELING ADJUSTMENT

After placing the Bench in the chosen location, it may be necessary to adjust the Feet to compensate for floor irregularities and achieve levelness.

NOTE: After leveling the Bench by adjusting Foot height, it is advisable to set the adjustment so that the front edge of the Top is 1/8" to 1/4" higher than the rear. This is so that loose objects will roll toward the Fence and not off the front edge of the Top onto the floor.

- Using a 19mm wrench (not included) loosen the M12 Nuts above the triangular Leg plates.
- Thread the M12 Nuts below the triangular Leg plates up or down as required then retighten both Nuts with two 19mm wrenches (not included) (FIG 8).



MAINTENANCE

- Periodically clean Workbench of accumulated grease, fluids or other debris.
- The Work Bench is finished in rugged powdercoating which will provide many years of effort free beauty however it is advisable to keep the finish clean and free from excessive dust and dirt.
- Keep the Workbench in a clean and dry environment. Avoid storing it in or exposing it to a damp or wet environment.
- Occasionally inspect all components for potential damage and proper alignment. Check all hardware for tightness
- DO NOT use if damage is discovered.

ADDITIONAL ITEMS

#12196Z	Chassis Clean
#30777ZP	Oil Eater Orange Cleaner
#30776ZP	Oil Eater Cleaner
#16201-#16203	Black Nitrile Gloves
#16204-#16205	Black Textured Nitrile Gloves
#31571	Rockwood Safety Glasses

If you have any questions about the use of this product, please contact

The Eastwood Technical Assistance Service Department: 800.343.9353 >> email: tech@eastwood.com

PDF version of this manual is available at eastwood.com

The Eastwood Company 263 Shoemaker Road, Pottstown, PA 19464, USA 800.343.9353 eastwood.com

© Copyright 2019 Eastwood Automotive Group LLC 11/19 Instruction item #31654Q Rev 2