

Eastwood[®]

DO THE JOB RIGHT.[®]

Item #31672

ELECTRIC 1/2" MINI BELT SANDER INSTRUCTIONS



The **EASTWOOD ELECTRIC 1/2" MINI BELT SANDER** is great for fine sanding and grinding jobs on virtually all metals including steel, aluminum, brass and more. Uses common 1/2" x 18" abrasive belts for convenience. The compact design allows access to tight places where larger Belt Sanders can't go.

INCLUDES

- (1) Sander
- (1) Abrasive Belt
- (1) 3mm Hex Key



SPECIFICATIONS

- Input Voltage:** 120 VAC, 60 Hz
- Input Amperage:** 5.3 Amps
- Plug Type:** 2-prong, polarized
- Cord Length:** 7'- 6"
- Certification:** ETL
- No-Load Speed:** 2300 Feet Per Minute
- Belt Size:** 1/2" x 18"

IMPORTANT SAFETY INFORMATION

The following explanations are displayed in this manual, on the labeling, and on all other information provided with this product:

⚠ DANGER

DANGER indicates a hazardous situation which, if not avoided, will result in death or serious injury.

⚠ WARNING

WARNING indicates a hazardous situation which, if not avoided, could result in death or serious injury.

⚠ CAUTION

CAUTION used with the safety alert symbol, indicates a hazardous situation which, if not avoided, could result in minor or moderate injury.

⚠ NOTICE

NOTICE is used to address practices not related to personal injury.

IMPORTANT SAFETY INFORMATION

GENERAL SAFETY RULES

WARNING

Read all instructions. Failure to follow all instructions listed below may result in electric shock, fire and/or serious injury. The term “power tool” in all of the warnings listed below refers to your mains-operated (corded) power tool or battery-operated (cordless) power tool.

SAVE THESE INSTRUCTIONS

1) WORK AREA SAFETY

- a) Keep work area clean and well lit. Cluttered or dark areas invite accidents.
- b) Do not operate power tools in explosive atmospheres, such as in the presence of flammable liquids, gases or dust. Power tools create sparks which may ignite the dust or fumes.
- c) Keep children and bystanders away while operating a power tool. Distractions can cause you to lose control.

2) ELECTRICAL SAFETY

- a) Power tool plugs must match the outlet. Never modify the plug in any way. Do not use any adapter plugs with earthed (grounded) power tools. Unmodified plugs and matching outlets will reduce risk of electric shock.
- b) Avoid body contact with earthed or grounded surfaces such as pipes, radiators, ranges and refrigerators. There is an increased risk of electric shock if your body is earthed or grounded.
- c) Do not expose power tools to rain or wet conditions. Water entering a power tool will increase the risk of electric shock.
- d) Do not abuse the cord. Never use the cord for carrying, pulling or unplugging the power tool. Keep cord away from heat, oil, sharp edges or moving parts. Damaged or entangled cords increase the risk of electric shock.
- e) When operating a power tool outdoors, use an extension cord suitable for outdoor use. Use of a cord suitable for outdoor use reduces the risk of electric shock.

NOTE: Use a minimum 14 gauge insulated cord, no longer than 25' in length.

3) PERSONAL SAFETY

- a) Stay alert, watch what you are doing and use common sense when operating a power tool. Do not use a power tool while you are tired or under the influence of drugs, alcohol or medication. A moment of inattention while operating power tools may result in serious personal injury.
- b) Use safety equipment. Always wear eye protection. Safety equipment such as dust mask, non-skid safety shoes, hard hat, or hearing protection used for appropriate conditions will reduce personal injuries.
- c) Avoid accidental starting. Ensure the switch is in the off-position before plugging in. Carrying power tools with your finger on the switch or plugging in power tools that have the switch on invites accidents.
- d) Remove any adjusting key or wrench before turning the power tool on. A wrench or a key left attached to a rotating part of the power tool may result in personal injury.
- e) Do not overreach. Keep proper footing and balance at all times. This enables better control of the power tool in unexpected situations.
- f) Dress properly. Do not wear loose clothing or jewelry. Keep your hair, clothing and gloves away from moving parts. Loose clothes, jewelry or long hair can be caught in moving parts.
- g) If devices are provided for the connection of dust extraction and collection facilities, ensure these are connected and properly used. Use of these devices can reduce dust-related hazards.

4) POWER TOOL USE AND CARE

- a) Do not force the power tool. Use the correct power tool for your application. The correct power tool will do the job better and safer at the rate for which it was designed.
- b) Do not use the power tool if the switch does not turn it on and off. Any power tool that cannot be controlled with the switch is dangerous and must be repaired.
- c) Disconnect the plug from the power source and/or the battery pack from the power tool before making any adjustments, changing accessories, or storing power tools. Such preventive safety measures reduce the risk of starting the power tool accidentally.
- d) Store idle power tools out of the reach of children and do not allow persons unfamiliar with the power tool or these instructions to operate the power tool. Power tools are dangerous in the hands of untrained users.
- e) Maintain power tools. Check for misalignment or binding of moving parts, breakage of parts and any other condition that may affect the power tools operation. If damaged, have the power tool repaired before use. Many accidents are caused by poorly maintained power tools.
- f) Keep cutting tools sharp and clean. Properly maintained cutting tools with sharp cutting edges are less likely to bind and are easier to control.
- g) Use the power tool, accessories and tool bits etc., in accordance with these instructions and in the manner intended for the particular type of power tool, taking into account the working conditions and the work to be performed. Use of the power tool for operations different from those intended could result in a hazardous situation.

5) SERVICE

- a) Have your power tool serviced by a qualified repair person using only identical replacement parts. This will ensure that the safety of the power tool is maintained.

ADDITIONAL SAFETY INFORMATION



⚠ WARNING SHOCK HAZARD!

- Never operate or store Sander in damp or wet conditions.
- Plug into a minimum 15 amp circuit. If using an extension cord, it must be AWG 14 or greater, no longer than 25'.



⚠ WARNING HEALTH AND INJURY HAZARDS!



- Dust and fine particles are generated while cutting which can contain hazardous or toxic substances. Breathing this dust can cause many serious respiratory health conditions. Always use NIOSH approved respiratory protection while using this Sander.
- This Sander will eject particles, dust and sparks at high velocity during operation. Wear approved eye and skin protection at all times while operating.
- Use of this Sander can generate excessive noise. Wear appropriate hearing protection while using.
- The moving Abrasive Belt of this Sander can quickly catch loose clothing, long hair or jewelry causing serious personal injury. Keep all loose clothing, long hair and jewelry away from operating Sander.
- This Sander can quickly start up when handling while plugged in to electrical supply causing serious personal injury. Always unplug the tool from the electrical supply before changing Abrasive Belts or performing maintenance.
- Sharp metal edges can cut. Always wear protective work gloves while handling.
- Moving Abrasive Belts can quickly cut flesh. Keep hands and fingers away from moving Abrasive Belt.
- This Sander can quickly and violently kick back or twist while operating causing severe hand and or wrist injury. Do not apply excessive force to Sander while in use. Always make sure the workpiece or material being cut is securely clamped or anchored to allow two handed operation of the Sander.
- Damaged Abrasive Belts can break at high speed causing personal injury or property damage. If excessive vibration is felt, discontinue use immediately and disconnect tool from electrical supply. Inspect Abrasive Belt and Sander for damage. Do not resume use until resolution is found.
- This Sander will eject a trail of sparks at high speed which can ignite flammable materials or injure others nearby. Do not operate in the vicinity of flammable materials and keep all persons and pets away from the work area.

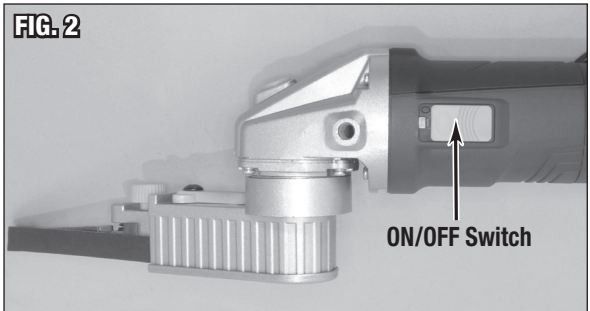
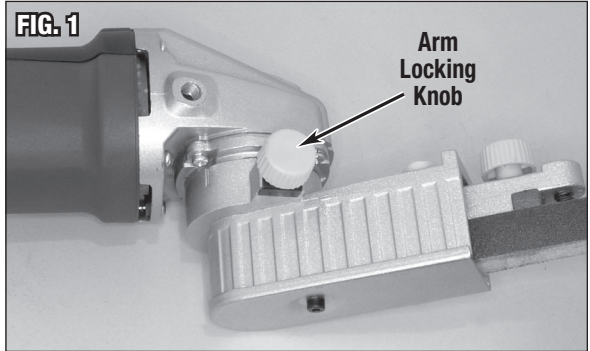
OPERATION

- Loosen the Arm Locking Knob, adjust Arm to the desired angle then securely re-tighten the Arm Locking Knob (**Fig 1**).
- While holding the Sander securely in two hands, slide the ON/OFF Switch located on top of the Sander body forward (**Fig 2**).*

⚠ WARNING

DO NOT force the Sander or kickback could quickly occur causing severe injury!

- To begin sanding, allow several seconds for the motor to reach full speed then gently feed the Abrasive Belt into the workpiece.
- Slowly and steadily allow the abrasive of the Abrasive Belt to do the work.
- When the sanding is complete, release the Switch and allow the Abrasive Belt to stop before pulling away from the workpiece.



*

⚠ NOTICE

The switch can be locked in the “on” position by depressing the front of the switch while sliding it forward. Tap the rear of the switch to unlock and turn off the sander.

ABRASIVE BELT REMOVAL

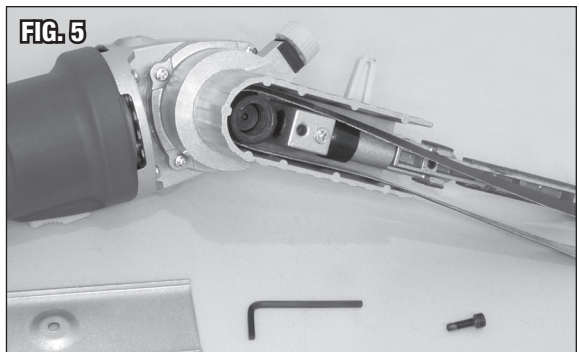
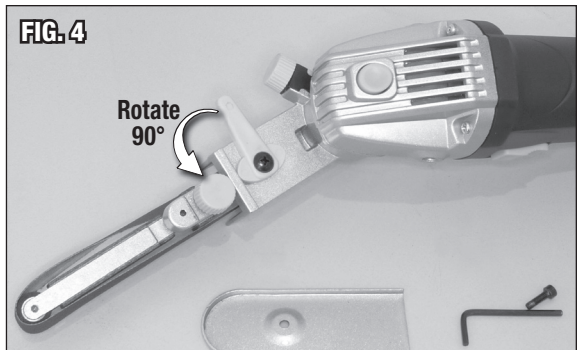
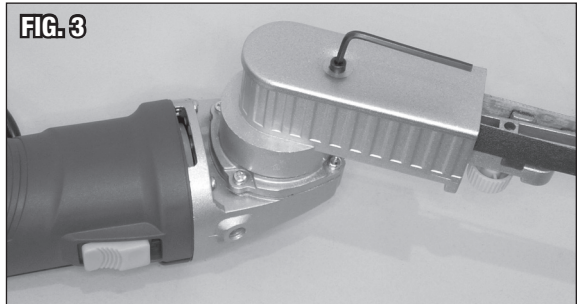
⚠ WARNING

This Sander can quickly start up when handling while plugged in to electrical supply causing serious personal injury. Always unplug the Sander from the electrical supply before changing Abrasive Belts or performing maintenance.

⚠ WARNING

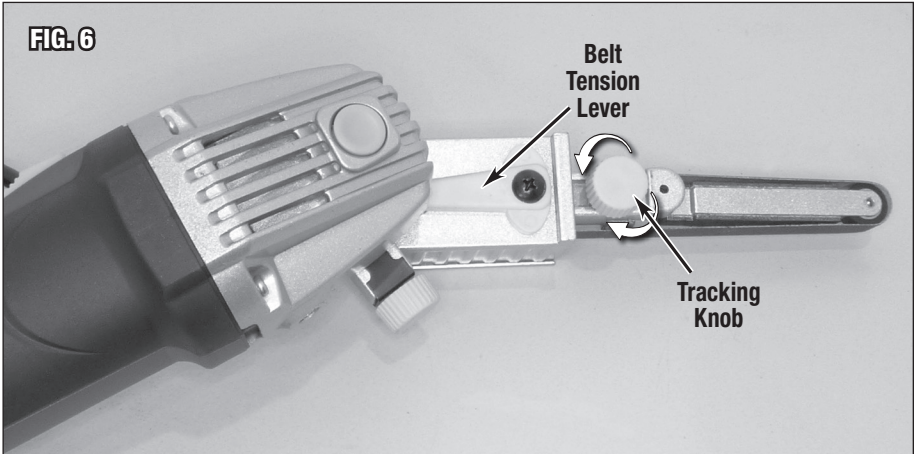
Abrasive Belt edges can be abrasive to flesh. Always wear protective work gloves while handling.

- Using the included 3mm Hex Key, remove the Retaining Screw and Belt Drive Cover (Fig 3).
- Rotate the Abrasive Belt Tensioner Lever 90° Counter-Clockwise to release tension on Belt (Fig 4).
- Pull out Abrasive Belt (Fig 5).



ABRASIVE BELT INSTALLATION

- Install replacement Belt.
- Rotate the Abrasive Belt Tensioner Lever 90° Clockwise (so that it is in-line with the Arm) to introduce tension on Belt (**Fig 6**).
- Replace the Belt Drive Cover and Retaining Screw.



ABRASIVE BELT TRACKING ADJUSTMENT

- Rotate the Belt Tracking Knob located on the right side of the Arm (**Fig 6**) Counter-Clockwise to track left; Clockwise to track right.

MAINTENANCE

IMPORTANT NOTE: The following maintenance should be performed before each use:

- Inspect Abrasive Belt for cracks, damage or premature wear.
- Clean dirt and debris from motor air cooling slots.
- Clean dirt and debris from Abrasive Belt Mounting Shaft.

TROUBLESHOOTING

PROBLEM	CAUSE	CORRECTION
Does Not Run When Switch is Depressed	No Electric Power to Sander	Check 120 VAC input plug connection.
		Check for tripped circuit breaker.
Motor Runs Too Slow/ Develops Low Power	Undersized or Too Long of an Extension Cord	Use only 14 gauge or larger cord.
		Limit length to 25'
Excessive Noise and/or Vibration	Abrasive Belt is Damaged	WARNING: This is an extremely dangerous condition! Stop use and replace Abrasive Belt!
Motor Overheats	Excessive Pressure Being Applied to Abrasive Belt	Allow Allow the tool to do the work. Do Not force!
	Dirt and Debris Buildup in Motor Cooling Air Slots	Use a brush or compressed air to remove debris.

ADDITIONAL ITEMS

- #28038 Sheet Metal Gauge
- #13475 Electric Metal Cutting Shears
- #28187 Bead Roller Kit
- #51088 Shrinker/Stretcher Set
- #31458 (5) 40 Grit Abrasive Belt
- #31456 (5) 80 Grit Abrasive Belt
- #31457 (5) 120 Grit Abrasive Belt

If you have any questions about the use of this product, please contact

The Eastwood Technical Assistance Service Department: 800.343.9353 >> email: techelp@eastwood.com

PDF version of this manual is available online >> eastwood.com/31672manual

The Eastwood Company 263 Shoemaker Road, Pottstown, PA 19464, USA

US and Canada: 800.343.9353 Outside US: 610.718.8335

Fax: 610.323.6268 eastwood.com