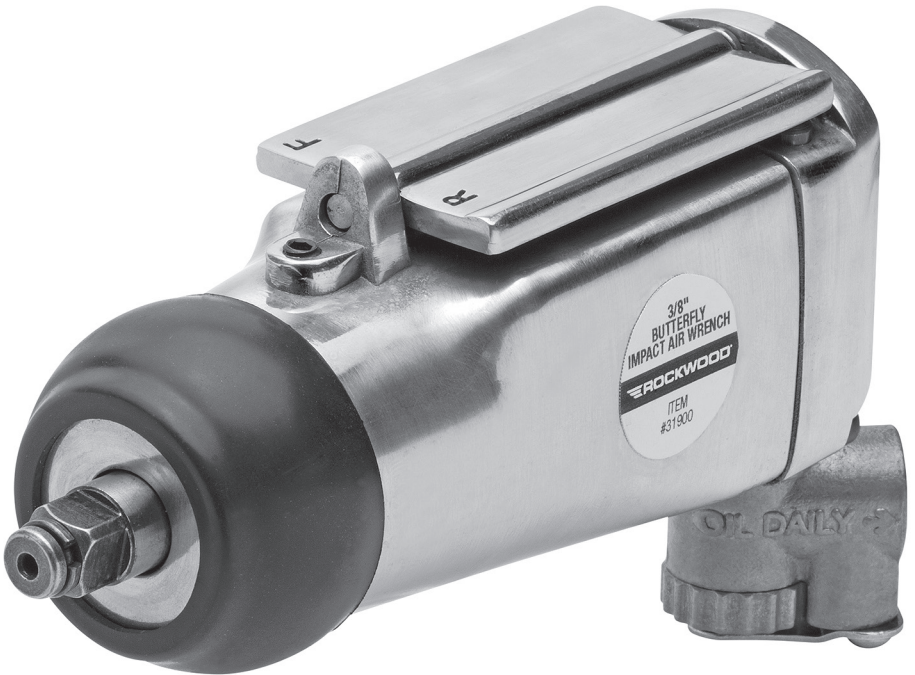


# 3/8" BUTTERFLY IMPACT AIR WRENCH

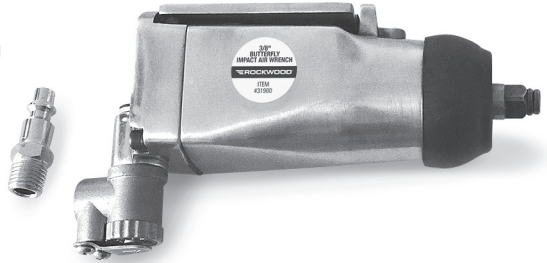
## INSTRUCTIONS



The **ROCKWOOD 3/8" "BUTTERFLY" IMPACT AIR WRENCH** features a large-capacity five-vane, ball bearing motor with a twin-headed hammer dog. Fully reversible with an infinitely throttled "Butterfly" type paddle control.

## CONTENTS

- (1) 3/8" Butterfly, Inline Impact Wrench
- (1) 1/4" MNPT, Male Quick Disconnect Inlet Fitting



## SPECIFICATIONS

- Square Drive:** 3/8"
- RPM:** 10,000 free speed
- Maximum Torque:** 75 ft-lbs [102 N.m]
- Air Consumption:** 3 cfm [85 L/min] @ 90 PSI
- Inlet thread size:** 1/4" FNPT
- Reversible, variable speed, 5 vane, ball bearing air motor**
- 360° Swivel air inlet with integral torque limiting control knob**

## SAFETY INFORMATION

The following explanations are displayed in this manual, on the labeling, and on all other information provided with this product:

### **⚠ DANGER**

DANGER indicates a hazardous situation which, if not avoided, will result in death or serious injury.

### **⚠ WARNING**

WARNING indicates a hazardous situation which, if not avoided, could result in death or serious injury.

### **⚠ CAUTION**

CAUTION used with the safety alert symbol, indicates a hazardous situation which, if not avoided, could result in minor or moderate injury.

### **⚠ NOTICE**

NOTICE is used to address practices not related to personal injury.



## **⚠ READ INSTRUCTIONS**

- Thoroughly read and understand these product instructions before using this tool. Failure to follow all warnings can result in tool damage or serious physical injury.
- Keep these product instructions for future reference.



## **⚠ WARNING EYE INJURY HAZARD!**

- Tool can eject metal particles, dirt and debris at high velocity. Always wear ANSI approved eye protection when operating this tool



## **⚠ WARNING HEARING DAMAGE HAZARD!**

- This Eastwood Pneumatic Tool emits high sound levels while operating. Use ANSI approved ear protection when operating.



## **⚠ CAUTION BURSTING HAZARD!**

- Do not exceed 90 psi (6.2 bar) of tool inlet pressure. Permanent tool damage and/or explosion could occur and cause personal injury.



## **⚠ CAUTION INJURY HAZARD!**

- The tool can suddenly kick back or twist causing severe hand or wrist injury.
- Always make sure the workpiece is securely clamped or anchored to avoid sudden movements which could result in injury.
- Frequently inspect impact tool and socket (not Included) condition. If cracks develop, discontinue use immediately and replace damaged socket.
- Always disconnect tool from air supply when changing sockets and accessories to prevent accidental tool starting and potential injury.

## **⚠ CAUTION VIBRATION INJURY HAZARD!**

- This tool will vibrate during use! Repeated exposure to vibration may cause physical injury.

# SET-UP

- Using a good quality Teflon sealing tape (Not Included), thread the 1/4" MNPT, Male quick disconnect inlet fitting into the air inlet.

# CONNECTION

- Be sure that the air supply to the tool is clean and dry. Moisture in the supply line will quickly damage the motor and valves.
- A minimum 3/8" I.D. air line should be used for optimal performance.

# OPERATION

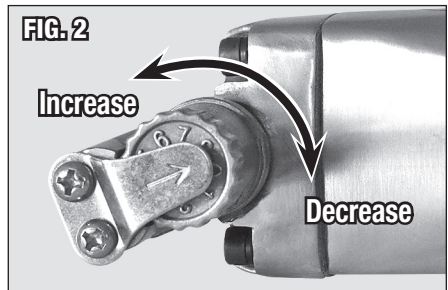
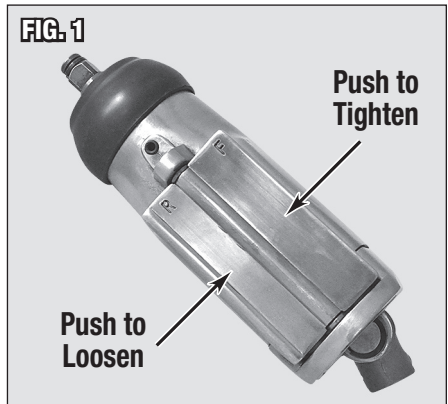
**⚠ CAUTION INJURY HAZARD!**

To avoid injury, always disconnect air supply to Wrench when attaching or removing sockets or accessories.

**⚠ CAUTION INJURY HAZARD!**

To avoid injury, only use sockets and accessories rated for "Impact" use.

- With air supply disconnected, snap selected socket or accessory over the retaining ring nested in the square drive.
- Connect air supply.
  - **To loosen fasteners:**  
Depress left side of the "butterfly" paddle on the back of the body downward toward the "R".
  - **To tighten fasteners:**  
Depress the right side of the "butterfly" toward the "F" (FIG 1).
  - Speed is regulated by pressure applied to the "butterfly" while speed and torque are limited by rotating the control knob located in the air inlet swivel. 0 is lowest, 8 is highest (FIG 2).



# MAINTENANCE

- Add several drops of air tool oil before each use by dropping directly into the air inlet.
- If tool is to be unused for an extended period, add 10 drops of air tool oil directly to the air inlet, rotate the tool motor by hand several times to distribute the oil throughout the motor then store the tool, handle up.



# TROUBLESHOOTING

<b>Tool doesn't respond to trigger depression</b>	Insufficient volume of air (CFM) to operate tool	Verify sufficient air supply to tool. (3 CFM @ 90 PSI minimum requirement).
	Moisture or other contamination in air supply	Check for moisture in air line and tool air inlet.
<b>Tool performance is slow or sluggish</b>	Insufficient volume of air (CFM) to operate tool	Verify sufficient air supply to tool. (3 CFM @ 90 PSI minimum requirement).
	Moisture or other contamination in air supply	Check for moisture in air line and tool air inlet.
	Air Motor is lacking lubrication	Stop use immediately and add air tool oil directly to air inlet.
<b>Tool is excessively noisy/ emits high pitched sound</b>	Air Motor is lacking lubrication	Stop use immediately and add air tool oil directly to air inlet.
<b>Tool vibrates excessively during use</b>	Out of balance condition from damaged socket or accessory	Stop use immediately, check for damage and replace socket or accessory.

# ADDITIONAL ITEMS

**#70491** Eastwood Industrial Air Hose, 3/8" x 25'

**#70492** Eastwood Industrial Air Hose, 3/8" x 50'

---

**If you have any questions about the use of this product, please contact**

The Eastwood Technical Assistance Service Department: 800.343.9353 >> email: [techelp@eastwood.com](mailto:techelp@eastwood.com)

PDF version of this manual is available online >> [eastwood.com/31900manual](http://eastwood.com/31900manual)

The Eastwood Company 263 Shoemaker Road, Pottstown, PA 19464, USA

US and Canada: 800.343.9353 Outside US: 610.718.8335

Fax: 610.323.6268 [eastwood.com](http://eastwood.com)