

Eastwood®

DO THE JOB RIGHT.®

Item #57468

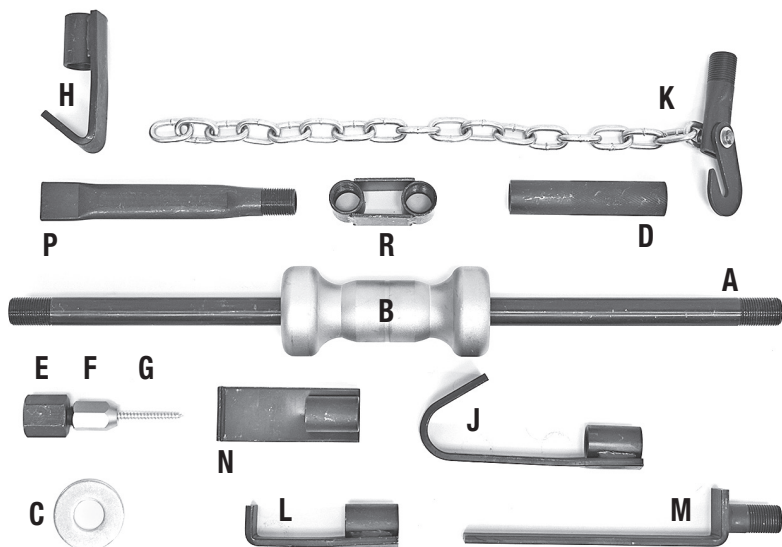
5LB. SLIDE HAMMER DENT PULLER KIT INSTRUCTIONS



The **EASTWOOD 5LB SLIDE HAMMER DENT PULLER KIT** includes all the common attachment and hook configurations to perform heavy-duty metal moving when doing auto body repairs and reconstruction. The solid cast-iron slide weight and all steel, quick-change, double-threaded shaft design allows maximum versatility with the available attachments.

CONTENTS

- (1) Tubular Slide Shaft with two threaded ends [A]
- (1) 5 lb. Slide Hammer Weight [B]
- (1) Impact Ring [C]
- (1) Knurled Handle [D]
- (1) Screw Puller Head [E]
- (1) Screw Retainer (1/4" diameter screw shank capacity) [F]
- (1) Lag Screw [G]
- (1) Short "J" Hook [H]
- (1) Long "J" Hook [J]
- (1) Chain Loop Hook [K]
- (1) "L" Hook [L]
- (1) Offset Wedge Bar [M]
- (1) Short Wedge Bar [N]
- (1) Long Wedge Bar [P]
- (1) Offset Coupler [R]
- (1) Heavy-Duty Blow-Molded Case



SAFETY INFORMATION

The following explanations are displayed in this manual, on the labeling, and on all other information provided with this product:

DANGER

DANGER indicates a hazardous situation which, if not avoided, will result in death or serious injury.

WARNING

WARNING indicates a hazardous situation which, if not avoided, could result in death or serious injury.

CAUTION

CAUTION indicates a hazardous situation which, if not avoided, could result in minor or moderate injury.

NOTICE

NOTICE is used to address practices not related to personal injury.



READ INSTRUCTIONS

- Thoroughly read and understand this manual before using.
- Save for future reference.



WARNING IMPROPER MOTOR VEHICLE REPAIR WORK CAN RESULT IN INJURY OR DEATH!

- Performing automotive repair work can cause injury, death and vehicle accidents. **DO NOT** attempt to use this tool or begin work without proper training and a thorough understanding of motor vehicle mechanical systems and repair procedures.



CAUTION PINCH AND CRUSH HAZARD!

- Keep fingers and hands away from moving parts when operating.



CAUTION FALL HAZARD!

- The workpiece must be securely anchored in place or clamped in a vice. Parts being pulled may suddenly release creating a dangerous fall and injury condition.



CAUTION INJURY HAZARD!

- Always wear ANSI approved eye protection when using this tool.
- Always wear gloves when operating this tool to avoid cuts from sharp metal edges.



SLIDE HAMMER SET-UP

- Thread the Knurled Handle [D] fully onto the Tubular Slide Shaft [A] until it seats.

⚠ NOTICE

Be sure to fully engage all threads.

- Slide the Impact Ring [C] over the Tubular Slide Shaft [A] until it seats against the Knurled Handle [D].
- Slide the Slide Hammer Weight [B] over the Tubular Slide Shaft [A] (FIG 1).



SLIDE HAMMER CONFIGURATION

- There are a vast number of configurations and combinations of attachments possible with this Body Puller Set all determined by the particular job to be done.
- The following photos display only several of the possible combinations: **(FIGS 2, 3, 4, 5, 6).**

FIG. 2

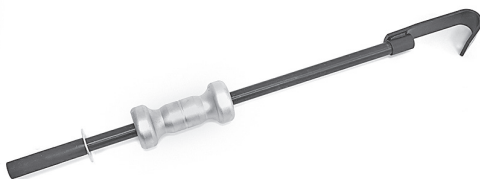


FIG. 3



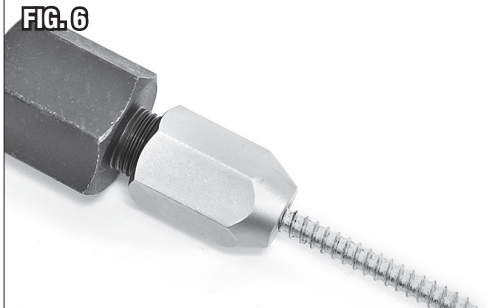
FIG. 4



FIG. 5



FIG. 6



SLIDE HAMMER USE

- Thread the selected attachment or combination fully onto the Tubular Slide Shaft until it seats.

NOTICE

Be sure to fully engage all threads.

- While holding the Knurled Handle securely in one hand and the Slide Hammer Weight securely in the other, position the attachment on the work then carefully slide the Slide Hammer Weight outward as close to the attachment end of the Tubular Slide Shaft as possible.
- Quickly and sharply pull the Slide Hammer Weight back toward the Handle allowing it to slam violently against the Impact Ring.
- Reposition attachment and repeat as often as necessary to move metal as needed.
- When work is completed, disassemble all components and store in the included Blow Molded Case.

SCREW PULLER USE

- Drill a 1/8" diameter hole into panel to be pulled.
- Thread the Lag Screw **[G]** with the Screw Puller Head **[E]** & Screw Retainer **[F]** into the hole on the panel.

NOTICE

Be sure to fully engage all threads.

This image shows a single sheet of white paper with horizontal ruling lines. The lines are evenly spaced and run across the width of the page. There are no margins, text, or other markings on the paper.

ADDITIONAL ITEMS

- #16196** Eastwood 14lb Slide Hammer Dent Puller Kit
- #31001** Eastwood 15" Reach Bulls Eye Pick
- #31002** Eastwood 20" Reach Bulls Eye Pick
- #31003** Eastwood 30" Reach Bulls Eye Pick
- #13520** Eastwood Contour Premium Body Filler

If you have any questions about the use of this product, please contact

The Eastwood Technical Assistance Service Department: 800.343.9353 >> email: tech@eastwood.com

PDF version of this manual is available at eastwood.com

The Eastwood Company 263 Shoemaker Road, Pottstown, PA 19464, USA

800.343.9353 eastwood.com