



DO THE JOB RIGHT.

Firmware Update Guide

Description:

Firmware Update Guide, switching to Inches mode

Item #:

66726

Issue Date (yy/mm/dd):

24/04/11

Issued By:

NC

Rev:

1

Page

1 of 3

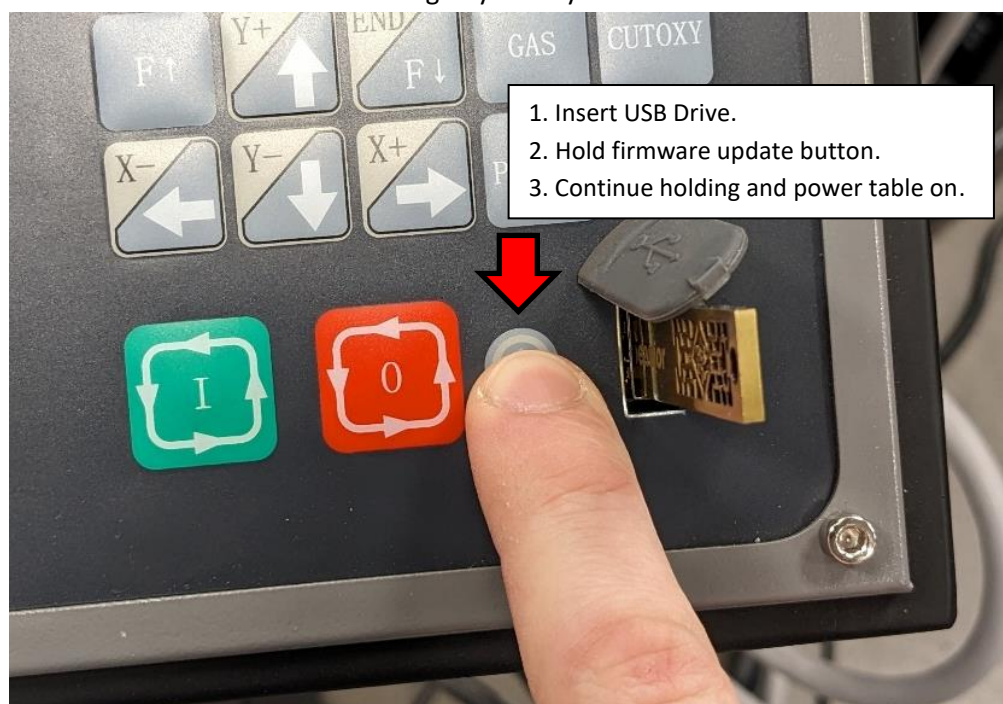
Eastwood has worked with our manufacturer to get a beta firmware update that features an inches mode (the table's default units are millimeters**). Please note that this firmware is still in testing. Send any bugs, issues, or feedback directly to NCornell@eastwood.com.

*Revision 1, 2024/04/11: latest update 3.0-C-5.3.7-FAT scaled down the Shape Library default part sizes in inches mode, fixed incorrect unit notations, Shape Library polygon now allows an odd number of sides.

**Tables shipped after March 15, 2024 now default to inches mode

Updating Firmware

- To update transfer the "SF70" and "startcnc" files to a USB drive with no other files on it. Do not modify the file names or format or they will not work.
- Start with the Cut Controller powered off (triggering the Estop works). Plug the USB drive into its port.
- While holding the firmware update button directly to the left of the USB port, switch the Cut Controller power on (release Estop). The table will automatically boot into the updater and install the new firmware. Once installation has begun you may release the button.



- The update will display the percentage progress, but it is very fast. Once complete the screen table will instruct you to reboot. Disconnect the USB drive and power cycle the table to reboot. Delete the update file from the USB drive.



DO THE JOB RIGHT.

Firmware Update Guide

Description:

Firmware Update Guide, switching to Inches mode

Item #:

66726

Issue Date (yy/mm/dd):

24/04/11

Issued By:

NC

Rev:

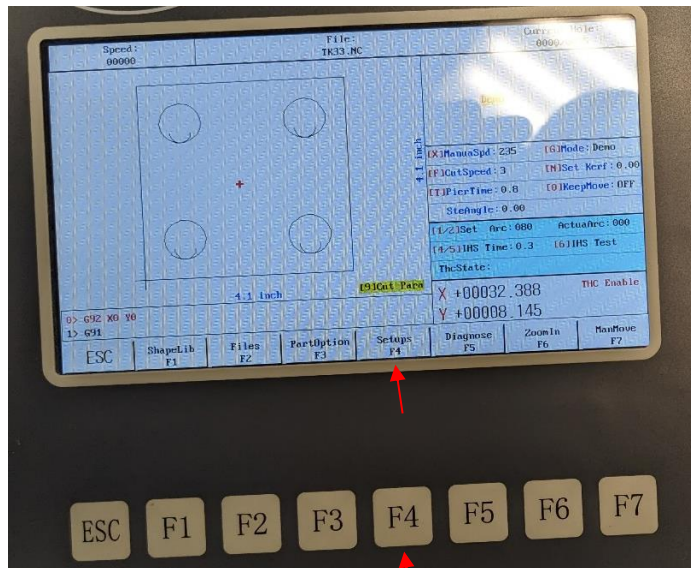
1

Page

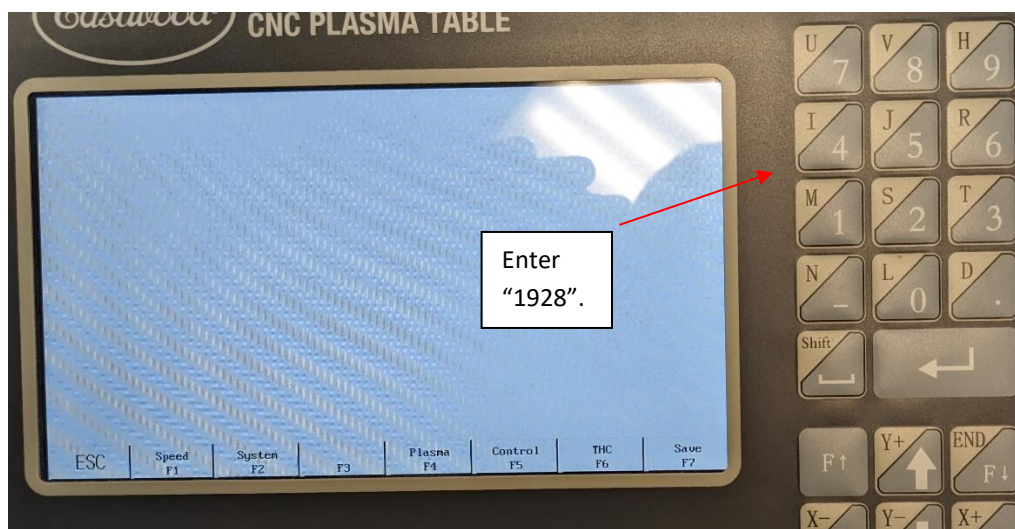
2 of 3

Switching Units

- To switch between units modes press "Setups F4" from the main cut screen then enter "1928" on the keypad.



Press.





DO THE JOB RIGHT.

Firmware Update Guide

Description:

Firmware Update Guide, switching to Inches mode

Item #:

66726

Issue Date (yy/mm/dd):

24/04/11

Issued By:

NC

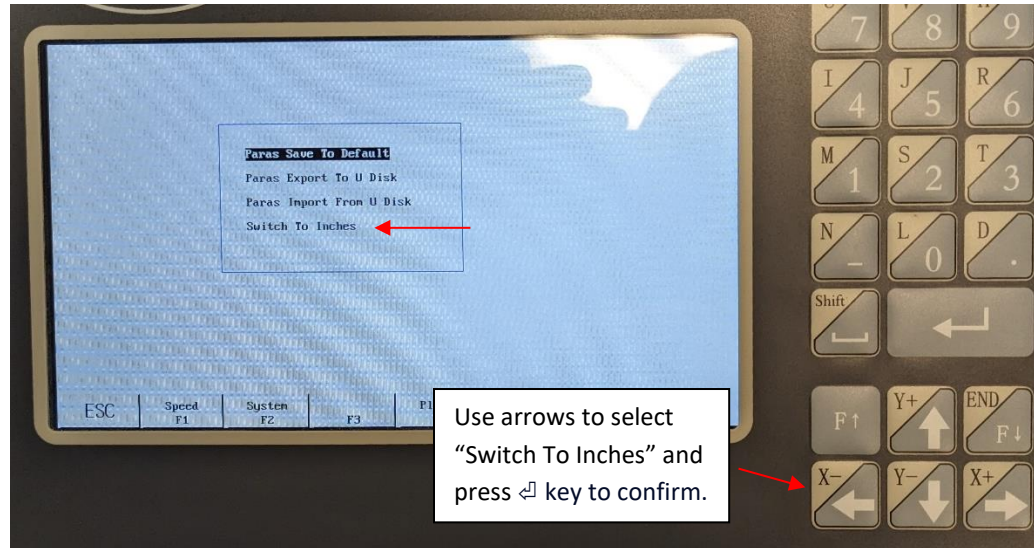
Rev:

1

Page

3 of 3

- This will open a pop-up window. Select the bottom option "Switch To Inches".



- You may now press "ESC" to exit back to the main cut screen and the change will be applied.