

ASSEMBLY

- Place the Front Section of the Ramps on a hard, smooth, level and clean work surface.
- Set the protruding tab of the Runner Section of the Ramps into the notches of the Front Sections and seat them securely.

USE

- With the wheels of the vehicle aligned straight ahead, place a pair of ramps in position, carefully positioning them to support the vehicle as it is moved up the ramp.
- Drive the vehicle up the Ramps slowly and carefully and stop when the wheels rest in the curved depressions.
- Set brake and prevent vehicle movement by placing Wheel Chocks behind the un-lifted wheels immediately after lifting.
- The Ramp sections may then be removed to provide easier undercar access (**FIG 1**).



TO REMOVE VEHICLE FROM RAMPS:

- Inspect area behind vehicle and clear it of any obstacles.
- Remove wheel chocks.
- Slowly and carefully back the vehicle off of the ramps, always making constant observations of the stability and the area behind the vehicle. If any indication of instability or obstruction occurs, **STOP IMMEDIATELY!** Continue only after issue has been resolved.

If you have any questions about the use of this product, please contact

The Eastwood Technical Assistance Service Department: 800.343.9353 >> email: tech@eastwood.com

PDF version of this manual is available at eastwood.com

The Eastwood Company 263 Shoemaker Road, Pottstown, PA 19464, USA

800.343.9353 eastwood.com

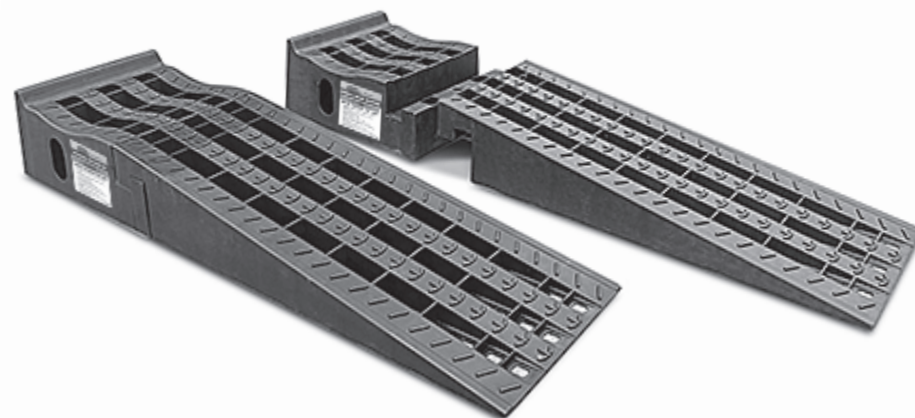
© Copyright 2020 Eastwood Automotive Group LLC 4/20 Instruction item #23048Q Rev 1



DO THE JOB RIGHT.®

Item #23048

DETACHABLE CAR RAMP SET INSTRUCTIONS



SPECIFICATIONS

Capacity:	7200 lbs. per pair
Ramp Angle:	9.5 degrees
Wheel Lift Height:	6-1/4" [160mm]
Clearance Height:	8-1/4" [210mm]
Overall Length:	51" [1300mm]
Width:	15" [380mm]

SAFETY INFORMATION

The following explanations are displayed in this manual, on the labeling, and on all other information provided with this product:

⚠ DANGER

DANGER indicates a hazardous situation which, if not avoided, will result in death or serious injury.

⚠ WARNING

WARNING indicates a hazardous situation which, if not avoided, could result in death or serious injury.

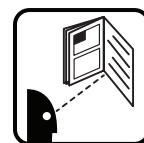
⚠ CAUTION

CAUTION indicates a hazardous situation which, if not avoided, could result in minor or moderate injury.

⚠ NOTICE

NOTICE is used to address practices not related to personal injury.

SAFETY INFORMATION



⚠ READ INSTRUCTIONS

- Thoroughly read and understand this manual before using.
- Save for future reference.



⚠ DANGER IMPROPER USE CAN CAUSE SEVERE INJURY!

- Use in matched pairs to support one end of vehicle.
- Use only on a hard, smooth, level and clean work surface. DO NOT use on a sloped or surface, earth, grass, sand, gravel or any other loose or unstable surface.
- Center load between sides of ramps. Drive vehicle until wheels sit in recessed sections of the Ramps. Failure to do so can cause the supported vehicle to roll which can quickly cause severe injury and property damage! While driving vehicle onto Ramps, always make constant observations of the stability. If any indication of instability occurs, **STOP IMMEDIATELY!**



⚠ WARNING

- DO NOT remove or cover any of the factory supplied labels or warnings! They include specific safety information that must be communicated to future users.

⚠ WARNING CRUSH HAZARD!

- Set brake and prevent vehicle movement by placing Wheel Chocks behind the unlifted wheels immediately after lifting.

⚠ WARNING INJURY HAZARD!

- No alterations or modifications shall be made to this product.

⚠ WARNING IMPROPER MOTOR VEHICLE REPAIR WORK CAN RESULT IN INJURY OR DEATH!

- Performing automotive repair work can cause injury, death and vehicle accidents. DO NOT attempt to use this equipment or begin work without proper training and a thorough understanding of motor vehicle mechanical systems.
- Always consult an authorized manufacturer's service manual or reference materials on the vehicle this product is to be used on.