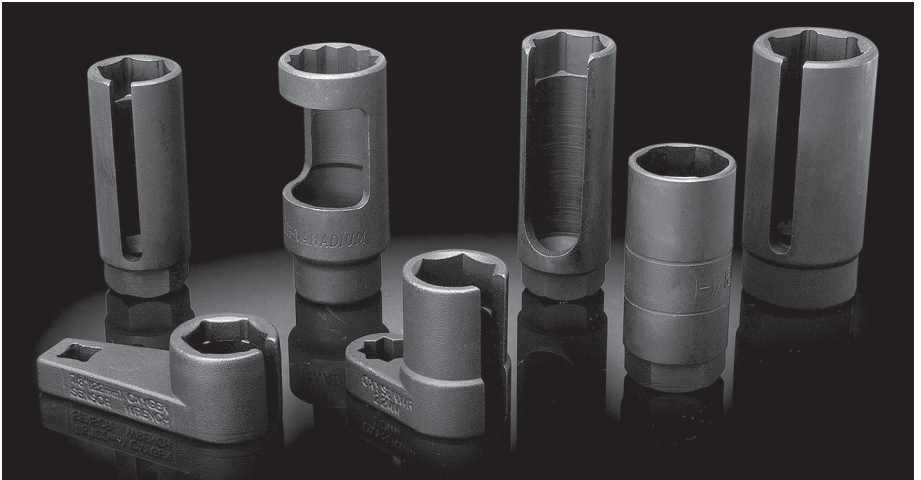


FAIRMOUNT[®]
TOOLS

Item #31724

7PC SENSOR SOCKET SET

INSTRUCTIONS



The **FAIRMOUNT® 7 PIECE SENSOR SOCKET SET** fits the most common sized Oxygen Sensor, Oil Pressure Sending Unit, Coolant Sensor, Injector and Vacuum Switch fittings.

CONTENTS

- (1) Vacuum Switch Socket: 1/2" Drive x 1-3/16" x 3-1/2"
- (1) Oxygen Sensor Socket: 3/8" Drive x 7/8" x 3-1/8"
- (1) Oxygen Sensor Wrench: 3/8" Drive x 7/8" x 1-1/4"
- (1) Oil Pressure Sending Unit Socket: 3/8" Drive x 1" x 2"
- (1) Heated Oxygen Sensor Socket: 1/2" Drive x 7/8" x 2"
- (1) Thermal Sensor Switch Socket: 1/2" Drive x 1-1/16" x 3-1/4"
- (1) Oxygen Sensor Socket/Vacuum Switch Socket: 3/8" Drive x 7/8" x 3-1/2"
- (1) Rugged Blow Molded Case

SAFETY INFORMATION

The following explanations are displayed in this manual, on the labeling, and on all other information provided with this product:

DANGER

DANGER indicates a hazardous situation which, if not avoided, will result in death or serious injury.

WARNING

WARNING indicates a hazardous situation which, if not avoided, could result in death or serious injury.

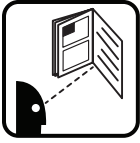
CAUTION

CAUTION used with the safety alert symbol, indicates a hazardous situation which, if not avoided, could result in minor or moderate injury.

NOTICE

NOTICE is used to address practices not related to personal injury.

SAFETY INFORMATION



⚠️ READ INSTRUCTIONS

- Thoroughly read and understand these product instructions before using the Sensor Sockets.
- Keep these product instructions for future reference.



⚠️ WARNING IMPROPER MOTOR VEHICLE REPAIR WORK CAN RESULT IN INJURY OR DEATH HAZARD!

- Performing automotive repair work can cause injury, death and vehicle accidents. DO NOT attempt to use this tool or begin work without proper training and a thorough understanding of motor vehicle mechanical systems.



⚠️ WARNING INJURY HAZARD!

- DO NOT use with impact tools.



⚠️ CAUTION EYE INJURY HAZARD!

- Chips or particles may be ejected from components causing eye injury. Wear ANSI approved eye protection while using.

⚠️ CAUTION FALL HAZARD!

- Fittings may suddenly loosen or shift while being loosened. Failure to ensure proper footing can quickly result in a fall which could inflict serious personal injury or property damage.

OPERATION

- Select the Socket that fits the fitting to be removed.
- Place Socket over fitting and remove in normal way. DO NOT use with impact tools.



Vacuum Switch Socket:
1/2" Drive x 1-3/16" x 3-1/2"

Removes oil pressure sending units on late 80's to mid 90's GM models.
Use with 1/2" drive tool.



Oxygen Sensor Socket:
3/8" Drive x 7/8" x 3-1/8"

Removes and installs oxygen sensors in domestic and many import vehicles.
Slot in socket for wire clearance.
Use with 3/8" drive tool or a 1" wrench.



Oxygen Sensor Wrench:
3/8" Drive x 7/8" x 1-1/4"

Low profile design for use in tight spaces.
Use with 3/8" drive tool.



Oil Pressure Sending Unit Socket:
3/8" Drive x 1" x 2"

Removes oil pressure sending units. Deep design fits switches up to 2-5/8".
Use with 3/8" drive tool or a 1-1/8" wrench.



Heated Oxygen Sensor Socket:
1/2" Drive x 7/8" x 2"

Slot in socket accommodates connectors on heated oxygen sensors.
Double 1/2" drive for easy access.



Thermal Sensor Switch Socket:
1/2" Drive x 1-1/16" x 3-1/4"

Removes and installs thermal sensor switches on 1973-1977 GM vehicles.
Use with 1/2" drive tool.



**Oxygen Sensor Socket/
Vacuum Switch Socket:**
3/8" Drive x 7/8" x 3-1/2"

Removes and installs vacuum switches with a 7/8" hex and some oxygen sensors.
Use with 3/8" drive tool or a 1" wrench.

If you have any questions about the use of this product, please contact

The Eastwood Technical Assistance Service Department: 800.343.9353 >> email: techelp@eastwood.com

PDF version of this manual is available online >> eastwood.com/31724manual

The Eastwood Company 263 Shoemaker Road, Pottstown, PA 19464, USA

US and Canada: 800.343.9353 Outside US: 610.718.8335

Fax: 610.323.6268 eastwood.com